

Construction of New John F. Kennedy High School
Finance, Demolition, Design, Build, Maintain, Leaseback (FDDDBML)
TECHNICAL SPECIFICATION
Project No. 700-5-1020-L-TAM

Attachment "B"

I. PROJECTS DESCRIPTIONS AND LOCATIONS

The location of the new school will be at JFK compound in Tamuning of Guam's public schools and shall:

- Main campus kept on quadrangle. Keep the in center courtyard and flagpole in front of school near the AFJROTC classroom.
- Stage moved to back of quadrangle.
- Move wing to avoid supervision problems.
- Open hallways like old JFKHS.
- Emergency back-up generator
- Daylighting windows installed in the classrooms, gymnasium, cafeteria, library, support rooms and administrative offices.
- Closed circuit TV security.
- Internet and phone accessibility in all the rooms.
- Resurface and pave parking lot. Pave grass area from tennis court gate entrance to corner fence by traffic light.
- Preserve the field in front of the school next to the annex building for accreditation purposes.
- Central air-conditioning units for Administrative offices, counseling office, cafeteria, library and gymnasium.
- Split unit air conditioning units for all classrooms and other facilities.

II. SCOPE OF WORK

1. Sixty (60) Standard Classrooms

- Air conditioned
- Internet and phone access
- Two (2) white boards per classrooms
- Counter installed on one (1) wall of each classroom with full length closet on each end.
- Two (2) bulletin boards for each classroom.

2. Four (4) SPED Classrooms

Attachment "B"

Construction of New John F. Kennedy High School
Finance, Demolition, Design, Build, Maintain, Leaseback (FDDDBML)
Project No. 700-5-1020-L-TAM

- Air Conditioned
 - Internet and phone access
 - 1-2 white boards per classroom
 - Counter installed on one (1) wall of each classroom with full length closed on each end
3. **One (1) SPED Resource Room**
- Air Conditioned
 - Internet and phone access
 - One (1) white board installed
 - One (1) bulletin board
 - Counter installed on one (1) wall of each classroom with full length closed on each end
 - Equipped with toilet, sink and shower (ADA if required)
4. **One (1) Itinerant Room**
- 10 x 10
 - Cabinet
5. **Four (4) ROTC Rooms**
- Should be located near large parking lot for easy access to ROTC rooms
 - Air Conditioned
 - Reception area with counter -450 sq. ft.
 - Three (3) individual offices within each 12 ft. x 12 ft.
 - Internet access in reception room and each instructor's office
 - **Storage Room** - located between office and classroom with access from office and hallway 1200 sq. ft. (400 sq. ft. per 100 students required)
 - ◆ Double metal doors on hallway entrance
 - ◆ Air conditioned
 - ◆ All doors must lock with dead bolts
 - **Two (2) Classrooms**
 - ◆ Electrical system
 - ◆ Internet access in room with ability to support five (5) - ten (10) computers
 - ◆ Capacity for forty-five (45) - fifty (50) students
 - ◆ Dual white boards per classroom
 - **Drill Pad** (Can use large front parking lot) 150 ft. x 150 ft.
 - ◆ Area needs to have removable poles with sleeves installed that are flushed with the ground to provide safety of students marching.

Attachment "B"

Construction of New John F. Kennedy High School
 Finance, Demolition, Design, Build, Maintain, Leaseback (FDDBML)
 Project No. 700-5-1020-L-TAM

6. **Four (4) Art Classrooms - Capacity for twenty (20) students**
- Air conditioned
 - Internet and phone access
 - Adequate electrical outlets on all walls to support audio/visual equipment
 - Three (3) classrooms designed for general art classes, one (1) for ceramics
 - Lockable storage room between each two (2) rooms access from both classrooms
 - Counters installed on at least two (2) - three (3) walls of all art classrooms with two (2) sinks per room centered on the wall
 - Ceramic room needs lockable kiln room
 - Adequate electrical outlets to support audio/visual equipment
 - All rooms equipped with Internet access
7. **Two (2) Home Economics Rooms, One (1) designed for Cooking and One (1) designed for Sewing**
- **Cooking Room**
 - ◆ Five (5) Cooking stations each set up with sink, stove, garbage disposal, and stove ventilation
 - ◆ Electrical capacity at each station to support all necessary equipment
 - ◆ Teacher's area with adequate outlets and internet access
 - ◆ One (1) board installed
 - **Sewing Room**
 - ◆ Electrical setup and capacity for twenty (20) sewing stations to support all necessary equipment
 - ◆ Small changing area designed to provide privacy but not locking
 - ◆ One (1) white board installed
 - ◆ Work counter installed on two (2) walls of classroom
 - **Storage Rooms / Laundry Room located between Sewing and Cooking Room**
 - ◆ One (1) Locking storage area with electrical capacity and space to support four (4) refrigerators and one (1) upright freezer across from cooking room.
 - ◆ One (1) Locking storage area (24 sq. ft.) access from sewing room
 - ◆ One (1) Locking laundry area address form sewing and cooking area
 - ◆ Large utility sink (wash mops and etc)
 - ◆ Electrical capacity for washer and dryer

Attachment "B"

Construction of New John F. Kennedy High School
 Finance, Demolition, Design, Build, Maintain, Leaseback (FDBBML)
 Project No. 700-5-1020-L-TAM

8. **Choral Room**
- Room designed with three (3) concrete tiers in a curved manner with adequate area for director, piano and teacher work area.
 - Tiers with wall to wall carpet and anti-slip edging
 - Air-conditioned with phone and internet access and adequate electrical outlets to support multiple pieces of electronic equipment.
 - Dual white boards installed
 - Locking storage room 150 sq. ft.
 - Two (2) Practice Rooms within the Choir Room 50-60 sq. ft. each sound proof
9. **Four (4) Business Classroom**
- Air conditioned
 - Internet and phone access
 - Electrical outlets on all walls
 - One (1) - two (2) white board per classroom
 - Counter installed on two (2) walls of each classroom
 - Capable of accommodating 28 student computer set up and one (1) teacher station set-up
 - Locking storage space between each two classrooms 30 ft. x 10 ft. accessible from both adjoining rooms.
10. **Physical Education Facilities**
- **Two Locker Rooms**
 - ◆ Air Conditioned
 - ◆ Non-skid floors
 - ◆ Electrical outlets on all four (4) walls of dressing area
 - ◆ Unobstructed open dressing area equipped with seven (7) benches (10-12 ft. x 2.5 ft.) with racks for hanging clothes
 - ◆ One hundred (100) basket lockers attached to one (1) wall for student use
 - ◆ Toilets/urinals and sinks in main dressing area
 - ◆ Open bay showers with drying area immediately outside shower area, separated from dressing area
 - ◆ Three (3) storage areas with locker room
 - ◆ One (1) lockable closet custodial supply
 - ◆ One (1) lockable equipment storage room with double metal doors - 10 ft. x 20 ft.
 - ◆ One (1) lockable daily equipment storage room 10 ft. x 10 ft.

Attachment "B"

Construction of New John F. Kennedy High School
 Finance, Demolition, Design, Build, Maintain, Leaseback (FDDBML)
 Project No 700-5-1020-L-TAM

- **Female PE Office**
 - ◆ Located and accessible within girls locker room
 - ◆ Designed with glass windows providing easy visibility of locker room with lockable metal entry door
 - ◆ Air conditioned with internet and phone access
 - ◆ Toilet, sink, shower and dressing area within office for teachers
 - ◆ Laundry area with electrical outlets to support washer/dryer
 - ◆ Lockable equipment and costume storage closet 4 ft. deep x 6 ft. wide
- **Male PE Office**
 - ◆ Location and access within the boys locker room
 - ◆ Designed with glass windows providing easy visibility of locker room with lockable metal entry door
 - ◆ Air conditioned
 - ◆ Four (4) locking individual cubicles at least 8 ft. x 8 ft. each with glass window providing visibility of locker room
 - ◆ Internet and phone access in each cubicle
 - ◆ Common office area to include: toilet, sink, shower and dressing area 150 sq. ft.
 - ◆ One (1) - two (2) electrical outlets in bathroom area
 - ◆ Lockable equipment storage 4 ft. x 4 ft.

11. **Gymnasium**

- Air conditioned
- Lockable double metal doors with easy out push bar
- Bleachers - at least one side of gym having bleachers that provide lockable storage beneath them suitable for storage of wrestling mats and similar items
- **Within Gymnasium**
 - ◆ One (1) Gymnastics equipment storage room 20 ft. x 20 ft.
 - ◆ One (1) Athletic department gymnasium storage 10 ft. x 10 ft.
 - ◆ Two (2) restrooms - one (1) MALE and one (1) FEMALE
- **Dance Room - One (1) (Attached or within gymnasium)**
 - ◆ Air Conditioned
 - ◆ Internet and phone access
 - ◆ Mirrors on at least one wall
 - ◆ Counter installed on one (1) wall of classroom with full length closed on each end
 - ◆ One (1) bulletin board installed
 - ◆ One (1) white board installed

Attachment "B"

Construction of New John F. Kennedy High School
 Finance, Demolition, Design, Build, Maintain, Leaseback (FDBBML)
 Project No. 700-5-1020-L-TAM

- **Mat Room - One (1)** (tumbling, wrestling, small activity - 60 ft. x 60 ft.)
 - ◆ Air conditioned
 - ◆ Internet and phone access
 - ◆ One (1) bulletin board installed
 - ◆ One (1) white board installed

- **Lecture/Video/Small Activity Classroom (20 ft. x 45 ft.)**
 - ◆ Air conditioned
 - ◆ Internet and phone access
 - ◆ One (1) bulletin board installed
 - ◆ One (1) white board installed

- **Weight Room (1200 sq. ft.)**
 - ◆ Air Conditioned
 - ◆ Internet and phone access
 - ◆ One (1) bulletin board installed
 - ◆ One (1) white board installed

12. **Athletic Director's Office and Storage Room**

- Split air conditioned
- Metal entry door with dead bolt
- Office area 150 sq. ft.
- Internet and phone access in office area
- Caged Locking Storage 900 sq. ft.
 - ◆ Limited access - only from within office area
 - ◆ Laundry area with electrical and water supply suitable for washer and dryer.

13. **Library** 8600sq. ft.

- All areas central air-conditioned
- Student area
- Internet and phone access available
- Lockable storage area 300 sq. ft.

- **Media Center within Library** 1800 sq. ft.
 - ◆ Internet access ports located on the floor
 - ◆ Computer center with stationary tables/counters

- **Teacher Resource Center within Library** 900 sq. ft.
 - ◆ Adequate electrical outlets in all walls
 - ◆ Internet and phone access
 - ◆ Two (2) 220 V outlets for Xerox Machine

Attachment "B"

14. **Cafeteria**
- Air conditioned
 - Seating capacity for 300 - 350 students
 - Serving area with capacity for multiple lines
15. **One (1) Nurses Station**
- Located within the vicinity of physical education facilities and administration with easy ambulance access.
 - All areas air conditioned
 - Reception/Patient reserving area 300 sq. ft.
 - Adequate electrical outlets in all areas to support equipment
 - Internet access
 - Bathroom with sink, shower, and toilet. Bathroom needs to be ventilated
 - Three (3) patient rooms with capacity to put at least two (2) beds per room. 64 sq. ft. / room
 - Lockable Records Room 150 sq. ft.
 - Lockable Supply Room 200 sq. ft.
 - Nurse's Office 12 ft. x 12 ft.
 - Phone and internet access
 - Lockable workroom with sink and outlets to support refrigerator 10 ft. x 10 ft.
16. **Administrative Offices**
- Central Air conditioning unit
 - Internet and phone access in all offices, storage, and under all service counters
 - Electrical outlets on all walls of each office
 - Electrical outlets under counters
 - Visible window view of the parking lot area and the students passing hallways
 - **Reception / Waiting Area in Main Office**
 - ◆ Enclosed plexiglass door and bulletin board (4 ft. x 4 ft.)
 - ◆ Wall embedded and enclosed trophy showcase
 - **Principal's Office** 300 sq. ft.
 - ◆ Conferencing room for small group meetings (12 capacity size)
 - ◆ Administrative secretary work area
 - **Assistant Principal, Curriculum** 12 ft. x 12 ft. within
 - ◆ Reception area with phone and internet access
 - ◆ Enclosed plexiglass door bulletin board (4 ft. x 4 ft.)
 - ◆ Clerical staff work area

Attachment "B"

- **Office Xerox Room** 36 sq. ft.
 - ◆ Air conditioned
 - ◆ Electrical outlets in all walls and adequate wattage for Xerox capability
- **Office Supply Room** 36 sq. ft.
 - ◆ Air conditioned
- **Computer Operator Room** 200 sq. ft.
 - ◆ Internet and phone access
 - ◆ Electrical outlets on all walls
 - ◆ Locking storage closet 5ft. x 5ft.
- **Single Occupancy Adult Restroom**
 - ◆ Not accessible to the public
- **Assistant Principal Discipline/Attendance** 12ft x 12 ft minimum
 - ◆ Located neat the nurse's office
 - ◆ Clerical staff area
 - ◆ Service counter area
 - ◆ Reception area with phone and internet access
- **Holding Rooms**
 - ◆ Separate entrance for GPD
- **Assistant Principal, Business** 12ft x 12ft minimum
 - ◆ Located near the Supply room
 - ◆ Secured service window for issuing and receiving money, tickets etc.
 - ◆ Administrative officer's office 12ft. x 12ft.
 - ◆ One (1) of locking storage closet 4ft. x 4ft.
 - ◆ Clerical space 240 sq. ft.
- **Assistant Principal SPED**
 - ◆ Reception area with phone and internet access 250 sq. ft.
 - ◆ One (1) of 12 ft. x 12 ft. office for Assistant principal
 - ◆ Three (3) of 10 ft. x 10 ft. offices for CRT's
 - ◆ One (1) of 12 ft. x 12ft. office within for LOTE Coordinator
 - ◆ One (1) Conference room within 15 ft. x 15 ft.
- **Security**
 - ◆ Room for monitoring closed circuit TV
 - ◆ Outside covered areas for monitoring visitor entrance

Attachment "B"

17. **Allied Health Program (Nursing Program)**
 - Classroom Setting and seating size
 - Central Air Conditioned
 - Laboratory - half of classroom size

18. **Counseling Center**
 - Should be located adjacent to main office for easy access to Records Room
 - Central Air Conditioned
 - Internet and Phone Access in all work areas and rooms
 - Electrical outlets on all walls
 - Reception Area/ College Career Center 200 sq. ft.
 - Eight (8 each) - Counselor Officer 10ft. x 10ft.
 - Conference Area 12ft. x 12ft.
 - Storage Room 12ft. x 8ft.

19. **Records Room One (1)**
 - Fireproof
 - Capable of housing 25,000 student records
 - Located in Central Book Locker
 - Air conditioned
 - Electrical outlets on all walls
 - Small lockable area within for personnel records

20. **Custodial/ School Aide Break Room One (1) 250 sq. ft.**
 - Air Conditioned
 - Internet and phone access
 - Electrical outlets on the walls
 - Two (2) Single occupancy adult restrooms (Men, Women)
 - Defined area for vending machines with floor drain

21. **Custodial Closets Four (4) 8ft. x 8ft.**
 - Two (2) per floor, located at opposite ends of building
 - Equipped with sink and running water and faucet for hose

22. **Restrooms**
 - **Faculty Restrooms Three (3) sets**
 - ◆ One located in Faculty Lounge
 - ◆ One located at opposite end of the building
 - ◆ One set located upstairs
 - **Student Restrooms**
 - ◆ Adequate for 2300 students

Attachment "B"

23. **Storage Rooms**
- **Paint and Hazardous Material Storage Room**
 - ◆ Location separate from main building
 - ◆ Natural ventilation
 - ◆ Five (5) rooms of 10ft. x 10ft.
 - ◆ Each with its own solid access door
 - **WAY Student Government Storage Room 15ft. x 15ft.**
 - **General Storage Room**
 - ◆ Air Conditioned
 - ◆ 220 V outlet for Xerox
 - ◆ 900 sq. ft.
 - ◆ Heavy duty metal shelving for supplies
 - ◆ Outside double doors for delivery
24. **Faculty Lounge (1) and Faculty Work Area (1) 900 sq. ft.**
- Air Conditioned
 - Internet and Phone access
 - Electrical outlets on all walls and for computer workstations with Xerox machine
 - Defined area for vending machines with floor drain
 - One (1) bulletin board installed
 - Two (2) restrooms - Male and Female
 - One (1) counter with sink
 - Storage area for Xerox paper
25. **Lockers**
- **Student Lockers**
 - ◆ 1/3 Full locker size located within classrooms 30/room
 - **Central Book Locker - one (1)**
 - ◆ Book locker area should have floor to ceiling shelves;
 - ◆ Heavy duty metal rows with sufficient room to move about with portable step platforms to access upper shelves
 - ◆ Double wide metal doors for access from outside for receiving shipments
 - ◆ Business window with counter area for issue/receiving textbooks and associated instructional materials that opens into quar area
 - ◆ Heavy duty tables for packing /unpacking materials and numbering for inventory control.

Attachment "B"

26. **Chemistry and Physics Building - West of Annex Building (between annex building and sidewalk)**
- Design this science building to mirror Okkudu's chemistry and physics classrooms
 - **Chemistry Classrooms**
 - ◆ Single story
 - ◆ Two (2) classrooms
 - ◆ Lab and storage rooms located between the two classrooms
 - ◆ Exhaust and ventilation system located within the lab
 - **Physics Classrooms**
 - ◆ Classroom lab within the classroom
 - ◆ Storage room
27. **GCC Auto and Construction Trades**
- ◆ East of Annex Building, between building and fence by Marine drive
28. **Auto and Construction Trade Shops**
- East of annex building between building and fence by Marine Drive
 - **Auto Shop**
 - ◆ Two (2) car bay work area
 - ◆ Eight (8) inch re-enforced floors
 - ◆ Airlines for compressor
 - ◆ Include classroom space for twenty-five (25) students
 - **Construction Trade Shop**
 - ◆ Shop setting to accommodate classroom trades for plumbing, masonry, carpentry, and electrical
 - ◆ Include classroom space for twenty-five (25) students
29. **MIS Room (160 square meter or 16'x10')**
- In addition to a computer operators office space, a Main Information System, MIS room is needed to house network equipment that will feed all the northern schools of GPSS
 - **Electrical workloads of computer networks**
 - ◆ PBX equipments
 - ◆ servers, routers, printers
 - ◆ Air Conditioner

Attachment "B"

Construction of New John F. Kennedy High School
 Finance, Demolition, Design, Build, Maintain, Leaseback (FDDBML)
 Project No. 700-5-1020-L-TAM

30. **Center Courtyard**
 - Adequate lighting for gathering around the courtyard

31. **Hallways**
 - Widen hallways to accommodate and prevent students from getting wet during rainy days
 - Install concrete benches in front of each classroom and other areas deemed feasible
 - Install concrete tables and seat at corner areas of the courtyard (see tumon beaches, similar or better)

32. **Collateral Equipment**
 - See attach list of JFK high school collateral equipment and submit brochure for approval or coordinate with the DPW's Project Managers/Engineers

Attachment "B"

Construction of New John F. Kennedy High School
Finance, Demolition, Design, Build, Maintain, Leaseback (FDBBML)
Project No. 700-5-1020-L-TAM

JFK High School		Quantity
Item No.	Item	
CLASSROOM EQUIPMENT		
1	Book Shelves 4 tier	122
2	Bulletin Board 60"x36"	156
3	Computer Desk (Rectangular Work station 60"w X 24"d X 32.5"h)	87
4	Computer System	239
5	Round Steel Wastebasket, 5.8 Ga	94
6	Storage Cabinet 30"x15"x66"	72
7	Student Combo Desk & Chair Chrome Frame (36in)	2100
8	Teacher Chair	108
9	Teacher Desk(double pedastal) Model#88004	90
10	Teacher Filing Cabinet (4 Drawer)	90
11	Teacher Podiums	90
12	Wall Mount Guam Classroom Flag, 2' x 3'	90
13	World Map & Globe Combo, 4th to 12	34
14	Wall Mount U.S. Classroom Flag, 2' x 3'	90
15	Heavy Duty Steel Uulity Shelf, 5 Tier, for storage rooms	60
16	Drying Rack for Art Classrooms	10
17	Fire Exhinguisher	158
18	EnviroVentilation System, Skurt	5
18	Kilm Master, Skurt 1218-3	2
19	Whiteboards 4x6	127
SCIENCE		
1	18" Stacking Chair	120
2	Beakers Various sizes (Case)	30
3	Biohazard Waste Disposal	1
4	Bunsen Burner (Single)	30
5	Chemical Storage Cabinet	2
6	Dissecting Kit	60
7	Disecting Pan	60
8	Disecting Pins(Boxes)	60
9	Erlenmeyer Flask Various Sizes (Case)	40
10	Graduated Cylinders Various sizes (Case)	40
11	Hazardous Waste Storage Bin	2

JFK High School		Quantity
Item No.	Item	
12	Material Safety Data Sheet CD	1
13	Meter Sticks	24
14	Microscope	0
15	Petri Dish	0
16	Prepared Slides Assorted Set	4
17	Pull Scales	4
18	Stainless Steel Trolleys	4
19	Test tubes 150 ML (Case)	0
20	Triple Beam Balance	0
21	Aquarium 50 Gallon with Accessories	0
22	Human Skeleton Model	4
23	Meosis Model	0
24	Mitosis Model	0
25	Cell Model	20
26	Eye Model	20
27	Binocular	20
28	Magnifying Glass	30
29	Science Table w/ Epoxy Resin Top	32
30	Swivel Stool with Backrest	40
31	Boreal Student Inclined Stereomicroscope	30
ROTC		
1	American Flag Set	2
2	Color Guard Flag Harness	5
3	Glass Display Shelves	4
4	Guam Flag Set	2
5	Marching Helmets	0
6	Marching Rifles	35
7	Multimedia Projector	1
8	PA System (Mixer-Amp, Speakers, Speaker Stands, Cables, Microphones)	2
9	Podiums	1
10	Portable White Boards	2
11	Saber Swords	0
12	Velvet Chain	6
14	Computer System	6
BAND/CHOIR		

JFK High School		Quantity
Item No.	Item	
1	4 Tier Choral Risers w/Guard Rails *(20' x 30')	1
2	Acoustic Guitar	0
3	Acoustic Piano (upright)	1
4	Alto Clarinet	0
5	Amati Euphonium	0
6	Band Uniforms	40
7	Bartone Saxophone	0
8	Baritone Saxophones Reeds 3	0
9	Bass Amp	2
10	Bass Charinet	0
11	Bass Drum w/stand	1
12	Bass Guitar	2
13	Bass Guitar Strings Set	2
14	Bass Violin	0
15	Baton	0
16	Beginner trombone	0
17	Blessing Flute	2
18	Blessing Piccolo	0
19	Book Shelves 4 ner	0
20	Box of Rico Clarinet Reeds 2 5	0
21	Cello	0
22	Choir Shell Complete Set	2
23	Clarinet Reeds Size 3	6
24	Crash Cymbals 12 -13 inch	0
25	Cymbal Stand	0
26	Director Chair	3
27	Drum Snare Harness	2
28	Drum Snares	2
29	Drum Thrones	2
30	Drum w/symbals	2
31	Drumsticks	10
32	Electric Guitar	2
33	Flutes	1
34	Folio Cabinets	0
35	French Horn	0
36	Guitar Amp	1

JFK High School		Quantity
Item No.	Item	
37	Guitar Strings Set (Acoustic)	10
38	Guitar Strings Set (Electric)	10
39	Keyboard Music Stand	1
40	Keyboard Speakers	1
41	Maracas	0
42	Marching Band Quads (Student Harness) w/Drum	1
43	Marimba	0
44	Misc. Instrument Supplies and Accessories	1
45	Multimedia Computer	3
46	Music Chair Rack	2
47	Music Chairs	35
48	Music Sheets Band (asst.)	0
49	Music Sheets Choir (asst.)	0
50	Music Stand	40
51	Olds Alto Saxophones	0
52	Orchestra Bells	1

JFK High School		Quantity
Item No.	Item	
53	PA System (Mixer-Amp, Speakers, Speaker Stands, Cables, Microphone)	0
54	Printer & Scanner	1
55	Rico Alto Saxophone Reeds 2.5	6
56	Rico Alto Saxophone Reeds 3	0
57	Rico Metal Clarinet Ligatures	6
58	Rico Tenor Saxophone Reeds 2.5	6
59	Rico Tenor Saxophone Reeds 3	0
60	Selmer Clarinet	0
61	Shure Microphone	6
62	Shure Mils	0
63	Sleigh Bells	0
64	Slide Trombone	0
65	Soprano Saxophone	0
66	Stage (20x30)	2
67	Stage Curtains Set	2
68	Storage Cabinet 30"x15"x66"	2
69	Student Oboe	0
70	Tambourine	0
71	Teacher Podiums	2
72	Temple Blocks	0
73	Timpani Drums (set of 4)	0
74	Triangle	0
75	Trumpet	0
76	Tuba (4/4)	0
77	Valve Trombone	0
78	Violas	0
79	Violins	4
80	Wood Block	0
81	Xylophone	0
82	Yamaha Tyros 2 Keyboard	2
83	Cymbals	0
84	Drum Trap Sets, 2	0
85	Marching Base Drum	2
86	Marching Snare Drum	2
86	Marching Tri -Toms	2

JFK High School		Quantity
Item No.	Item	
87	Souzaphones	0
88	Baritones	0
89	Tenor Trombones	0
90	Tenor Trombones w/Fattachments	0
91	Valve Trombone	0
92	Double French Horns	0
93	Cornets	0
94	Tenor Saxophones	0
95	Alto Saxophones	0
96	B-Flat Soprano Clarinet	0
97	E-Flat Soprano Clarinet	0
98	Bassoons	0
99	Oboes	0
100	Picolos	0
101	Electric Keyboard w/amp & stand	1
102	Electric Keyboard Amp	1
103	Electric Bass w/amp	1
104	Effects Peddal, Bass	0
105	Electric Guitar w/Amp	1
106	Effects Peddal, Guitar	0
107	Band Risers for 85-pc Band	0
108	Band Riser Caddy	0
109	Conductors Stand	0
110	Conductors Podium	0
111	Instrument Storage Cabinets	1
112	Music File Cabners	1
113	Wenger Posture Student Chair	0
114	Component Sterco Sound system	1
115	DVD/VCR Combo	8
116	TV, 27"	8
117	AV Cart	13
118	Choral Risers, 120- Voice Choir	1
119	Grand Piano	0
120	Carry/Storage Racks for Music Stands	2
PE/GYM		

JFK High School		Quantity
Item No.	Item	
1	300 lbs Barbel Set	1
2	5 Station/4 Stack Weight Station	2
3	Balance Beam	0
4	Balance Beam Scale	0
5	Ball Carry Net	2
6	Ball Rack	2
7	Base (3 base set)	1
8	Basketballs	15
9	Batons, Aluminium Relay	10
11	Bats	5
12	Clipboards, Sports (Basketball, Soccer, Volleyball, Football)	5
13	Cone Cart	1
14	Dumbbells with Portable Rack	1
15	Electric Pump	2
16	Equipment Bag 24x36"	2
17	First Aid Kit, 58 pc Trainer Set	2
18	Flag Football Set velcro Blue	1
19	Flag Football Set velcro Green	1
20	Flag Football Set velcro Red	1
21	Flag Football Set velcro Yellow	1
22	Flat Bench	4
23	Football Official Size	15
24	Gym Mats, 6' x 12'	10
25	Hurdles, Handy Hurdles™	6
26	Measuring Tape	2
27	Measuring Wheel	2
28	Megaphone	6
29	Pinnies (set of 12) Blue	0
30	Pinnies (set of 12) Green	0
31	Pinnies (set of 12) Red	0
32	Pinnies (set of 12) Yellow	0
33	Plate Rack	2
34	Portable White Board	4
35	Referee Stand	2
36	Rip Flag System	0

JFK High School		Quantity
Item No.	Item	
37	Safety Cones 15"	12
38	Safety Cones 18"	24
39	Safety Cones 48"	8
40	Safety Cones 28"	12
41	Score Board	1
42	Soccerballs	20
43	Softball Bases	2
44	Softball Class Pack, Secondary. Include Balls, Gopher Sport	2
45	Stationary Bike	2
46	Stopwatch	5
47	Table Tennis	2
48	Table Tennis Balls, Pack of 144 pcs	1
49	Table Tennis Paddle	2
50	Teacher Chair	0
51	Teacher Desk, Single Pedestal	0
52	Teacher Filing Cabinet 4 Drawer	0
53	Tennis Balls	1
54	Tennis Net	2
55	Tennis Raquets Asst	4
56	Timer	1
57	Treadmill	2
58	Tug-of-War Rope	0
59	Volleyball Net	2
60	Volleyball Standard, Portable	2
61	Volleyballs	15
62	Weight Bench	4
63	Wrestling Mat 10 x 10	4
64	Aluminum Bleacher, 5 row, 50 seat capacity	4
65	Universal Gym (leg press, arm, laterals, etc)	1
66	Shower Curtain	4
67	Rugby Ball	10
68	Soccer Goal Post	0
69	Soccer Goal Net	2
70	Volleyball Standard, Portable	2
71	Volleyball Net, Competition-Grade	2

JFK High School		Quantity
Item No.	Item	
72	Fast Pitch Softball Pack	2
73	Softball Base Set	2
74	Portable Basketball System	2
75	Flag Belt System	2
76	Pinnies, 30 Pack	6
77	Indoor Soccer Goal	2
78	Outdoor Soccer Goal	1
79	Weight Scale	2
80	Gym Mats	10
81	Portable White Board	4
82	Weight Bench	4
83	Flat Weight Bench	4
84	Dumbell with Rack	1
85	Olympic Barbell Set	4
86	All-Terrain Equipment Wagon	1
87	All-Terrain Ball Master Rack	1
88	Utility Cart w/Cabinet (Blue)	2
89	30-Pedometer	2
90	8.5" dia Set Utility Balls - Set of 6	1
91	40" dia Omnikin Ball/Bladder	1
92	Archery Storage Cart	1
93	Bear Target Armguard	30
94	Bear Shooting Tab	30
95	36" Self-Healing Ethafoam Target	6
96	Roll-Away Target Stand	6
97	28"L Arrows (Set of 72)	1
98	30"L Arrows (Set of 72)	1
99	Package w/ 48"H Backboard (Forest Green Padding)	2
100	Bison Locking Ball Cart (Blue)	1
101	Rainbow Cyclone Basketballs, Size 6 (Set of 6)	1
102	Rainbow Cyclone Basketballs, Size 7 (Set of 6)	3
103	Fiberglass Stuckable Benches - Yellow	6
104	Rainbow Set Half-Cones (Set of 36)	1
105	Storage Caddy	1
106	25 lb Capacity Dry Line Marker	1
107	English Measuring Wheel	1
108	Health-O-Meter FloorScale	1
109	UltraFit ClassStep Fitness Steps (Set of 26)	1
110	ClassStep Cart	1

JFK High School		Quantity
Item No.	Item	
111	Folding Goal w/ Net	2
112	Size 4 Rainbow Set	2
113	GOPHER Performer Plus Size 5 Official	12
114	Team Croquet	1
115	Regulation Full-size Wrestling Mat	1
116	Mat Transport Carts 58"L x 22"W Cart, 30 lb	3
117	Tumbling Mats, Embassy Vinyl 6' x 12', 45 lb, Velcro on 2 ends, royal blue color	12
118	Mat Mover	2
119	AAI Graphite Parallel Bars	1
120	48"L x 24"W x 2"-12"H, Wedge, Blue	1
121	AAI Junior Coil Board	1
122	Vaulting Buck	1
123	Alumaflex Competition Balance Beam	1
124	6x15.5x12cmv4 Balance Landing Mat	1
125	Universal Transporters	1
126	Deluxe Heavy-Duty Electric Inflator	1
127	0.5 hp Inflator/Deflator	1
128	Softcrosse Set, 12 Sticks, 12 Balls	2
129	Right Throw	26
130	Left Throw	4
131	Diamond 12RFPSC	24
132	All-Terrain Lockable Totemaster	1
133	DOM Clear Paddle	24
134	Body Ball Game	1
135	Rainbow Set of Large (36"L x 24"W) Mesh Bags - Set of 6	1
136	Hi-Lo Scoop set	12
Weight Room		
137	Mirrors installed on one wall	
138	Floor mats - 4' x 6' Solid Black Mat	
139	Teacher Desk (Double Pedestal)	1
140	Teacher Chair	1
141	Storage Cabinet 30" x 15" x 66"	1
142	Vertical Dumbbell Rack	1
143	Olympic Weight Set (Gray Plates)	1
144	Shoulder Press Stool, Gray Frame, Dark Green Upholstery	1
145	Tricep Rope	1
146	Tricep Bar	1
147	Power Source Smith Machine with Counter-Balance System, Gray Frame	1

JFK High School		Quantity
Item No.	Item	
148	Adjustable Flat/Incline/Decline, Bench, Gray Frame, Dark Green Upholstery	1
149	Weight Pins	24
150	Spring Collars	24
151	Keys Plate—Loaded Set (Set of 9)	1
152	Plate Set w/Rack	1
Dance Room		
153	Glassless Wall Mounted Mirrors - 48" x 96"	6
154	Teacher Chair	2
155	Storage Cabinet 30" x 15" x 66"	2
156	Califone PowerPro Deluxe PA Music System (heavy duty PA with wireless mike and CD capabilities)	1
157	Utility Cart w/Cabinet (Blue)	1
Girls Lockerroom		
158	12"D Six Tier Ventilated Locker, Triple-Wide, Unassembled (Grey)	18
Mens PE Office		
159	Teacher Desk (Double Pedestal)	3
160	Teacher Chair	3
161	Teacher Filing Cabinet (4 Drawer)	1
162	Shower Curtain	6
Girls PE Office		
163	Teacher Desk (Double Pedestal)	3
164	Washer/Dryer Stack Combo	1
165	Teacher Chair	3
166	Teacher Filing Cabinet (4 Drawer)	3
167	Storage Cabinet 30" x 15" x 66"	1
COMPUTER CLASS		
1	Bulletin Board 60x36	1
2	Computer System	255
3	Laptop System	44
4	Multi Media Projector	32
5	Printer & Scanner	136

JFK High School		Quantity
Item No.	Item	
6	Split Level Computer Training Tables 72x36 (top & base)	0
7	Storage Cabinet 36x24x66	0
8	Student Chairs	82
9	Teacher Chair	18
10	Teacher Desk, Single Pedestal	1
11	Teacher Filing Cabinet 4 Drawer	0
12	Teacher Filing Cabinet 2 Drawer	17
		0
HOME ECONOMIC		
1	Book Shelves 4 tier	0
2	Bulletin Board 60x36	0
3	Folding Table, Blow Molded Top	86
4	Refrigerator	4
5	Storage Cabinet 30x15x66	2
6	Student Chairs 18"	240
7	Teacher Chair	2
8	Teacher Desk	2
9	Teacher Filing Cabinet (4 Drawer)	0
10	Washing Machine	1
	Stove - Electric	0
MAIN OFFICE		
1	2 Drawer Filing Cabinets	6
2	2 Way Radios	25
3	4 Drawer Filing Cabinets	10
4	Beam Seating, 4 Seat, Lobby	5
5	Book Shelves 4 tier	14
6	Computer System	10
7	Die Cut	2
8	Display Case	9
9	Multimedia Projector	3
10	Outdoor Receptacle - Side Openings	20
11	Paper Dispenser (Butcher Paper Rack)	5
12	Paper Shredder	3
13	Printer & Scanner	9

JFK High School		Quantity
Item No.	Item	
14	Refrigerator	1
15	Round Steel Wastebasket, 20 Ga	16
16	Round Steel Wastebasket, 20 Ga	90
17	Table, Adjustable Height, 30" x 72"	12
18	Analog/VOIP Business Telephones for all offices & classrooms	1
PRINCIPAL		
20	Boat Shape Conference Table	3
21	Legal Size 4 Drawer 512CP	5
22	Letter Size 2 drawer 514CP	2
23	Metal 4-tier shelves	4
24	Storage Cabinet 30x15x66	5
25	Student Chairs 18"	0
26	Whiteboards 4x6	5
27	Conference Mid Back Chair	48
28	Portable White Board	11
ASSISTANT PRINCIPAL		
29	Legal Size 4 Drawer 512CP	19
30	Letter Size 2 drawer 514CP	19
31	Megaphone	4
32	Metal 4-tier shelves	6
33	Round Table, 48" Dia., Adjustable Height	3
34	Storage Cabinet 30x15x66	3
35	Student Chairs 18"	0
36	Whiteboards 4x6	11
COUNSELORS		
37	2 Drawer File Cabinet	2
38	4 Drawer File Cabinet	13
39	4 drawer lateral file (30"w X 19 1/2"d X 53 1/2"h) Hon Catalog pg. 167	0
40	4 drawer lateral file in charcoal (36"w X 19 1/2"d X 53 1/2"h) Hon Catalog pg. 166	0
42	Beam Seating, 4 Seat, Lobby	0
43	Metal Book Shelf 4-tier	2
44	Student Chair 18"	0

JFK High School		Quantity
Item No.	Item	
45	Teacher Chair	9
46	Teacher Desk	5
47	Whiteboard, Portable 3' x 6', MR 736	7

JFK High School		Quantity
Item No.	Item	
STAFF/LIBRARY TECH/CRT'S		
48	2 Drawer File Cabinet	0
49	4 Drawer File Cabinet	0
50	Bulletin Board 60"x36"	1
51	Metal Book Shelf 4-tier	0
52	Student Chairs	0
53	Teacher Chair	0
54	Teacher's Desk	0
ADMIN. OFFICER		
55	2 drawer File Cabinet	3
56	4 Drawer File Cabinet	4
57	Binding Machine System	1
58	Bulletin Board 60"x36"	1
59	Cash Box	4
60	Electronic Safe	1
61	Key Box Storage, Hold 240 Keys, #k-240	1
62	Laminating Machine	4
63	Metal Book Shelf 4-tier	2
64	Paper Shredder	1
65	Paper Trimmer	3
66	Storage Cabinet, Metal 36x18x72, #FFH-183	18
67	Teacher Chair	4
68	Teacher Desk	4
69	Whiteboard	1
COMPUTER OPERATOR OFFICE		
70	Columbia School Computer System	0
71	EPSON DFX 8500	3
72	Surge Protectors	30
73	Zip Drives, Iomega 750Mb	0
ESL COORDINATOR		
74	2 Drawer File Cabinet	2
75	4 Drawer File Cabinet	2
76	Storage Cabinet, Metal 36x18x72, #FFH-183	2

JFK High School		Quantity
Item No.	Item	
77	Teacher Chair	2
78	Teacher Desk	2
	Sink for Classrooms	0

JFK High School		Quantity
Item No.	Item	
	NURSE'S OFFICE	
1	2 Drawer File Cabinet	40
2	4 Drawer File Cabinet	4
3	Balance Beam Scale	5
4	Biohazard Waste Disposal	5
5	BMI Scale, SECA 703 Electronic Measuring Station	4
6	Carts	1
7	Dryer	5
8	Emergency carts, Medical Supply #73449	4
9	Exam Light	20
10	First Aid Couch	5
11	Folding Portable Curtain	5
12	Narcotics Cabinet	5
13	Oto/Ophthalmoscope Set	5
14	Refrigerator	6
15	Sphygmomanometer (Blood Pressure Cuffs)	6
16	Steel Step-On- Can, 12 Gallon	1
17	Steel Step-On- Can, 24 Gallon	6
18	Stethoscopes, Sprague Rappaport-Type	10
19	Storage Cabinet, Metal 36x18x72. #FH-183	5
20	Stretcher, Transport	4
21	Stretchers, Aluminum Break Apart #JAS400	15
22	Teacher Chair	15
23	Teacher Desk	50
24	Thermometer	15
25	Towel Dispenser, C-Fold	5
26	Vision Screening Instrument	0
27	Washer	5
28	Water Dispenser (Hot, Cold & Room Temp)	10
29	Wheel Chairs	30
30	Crutches, Adjustable	10
31	16" Standing Fan	19
32	Shower Curtain	48
33	Blanket	0

JFK High School		Quantity
Item No.	Item	
		0
CAFETERIA		
1	Cafeteria Table	20
2	Utility Cart	4
3	Teaspoon, Stainless Steel	50
4	Dinner Fork, Stainless Steel	50
5	Melamine Six Compartment Tray	1000
6	Serving Spoon	10
7	Serving Spoon, Slotted	10
8	Ladle, 14 1/2", 4 oz.	5
9	Dial Thermometers, Pocket Test	3
10	Serving Tongs, 16"	5
11	Disher, Scooper, Size 6	5
12	Cutting Board	2
13	Scales	1
14	Trash Cans	10
15	Mop Bucket & Wringer	1
16	Measuring Spoon Set	2
17	Measuring 4 quart. w/handle	1
18	16 quart Heavy Weight Colander	1
19	12"x18"x6" Food Storage Boxes w/lids	0
20	Full Size 4" Deep Stainless Steel Steam Pan's w/cover	3
21	Platform Trucks (70" Length X 40" Width)	1
22	6' x 4' Non-slip Rubber Mat for entrance way	6

JFK High School		Quantity
Item No.	Item	
LIBRARY		
1	60 DIA x 29 in Brodart #60-850-000	7
2	AV Carts 44"	3
3	Cam Corder, Panasonic Palm corder Mini DV Digital	1
4	Card Catalog Cabinets	5
5	CD/Cassette Player	1
6	Circulation Desk System	10
7	Computer System	3
8	Digital Camera	1
9	Diversity Stand	1
10	Library Automation Software, Book Bar Coder and Scanner	1
11	Library Security System	3
12	Multimedia Projector	1
13	Newspaper Displayers	7
14	Overhead Projector Cart	1
15	Paper Dispenser (Butcher Paper Rack)	3
16	Periodical Displayers	3
17	Portable White Board	5
18	Printer & Scanner	24
19	Projector - Overhead 3m	0
20	Revolver	20
21	Round Folding Table	200
22	Student Chair 18"	5
23	Table, Adjustable Height, 30" x 72"	7
24	Traditional Single-Sided Book Truck	3
25	Tripod Projector Screens	2
26	Tripods for Video Camcorder	14
27	TV - 27 in.	14
28	VHS/DVD Player	12
29	Width suck	0
		0
LIBRARY TECH		
30	2 Drawer File Cabinet	7
31	4 Drawer File Cabinet	5

Unit Cost	Total Cost	Equipment Source
285.00	\$ 34,770.00	www.schooloutfitter.com
144.95	\$ 22,612.20	Micro School
328.00	\$ 28,536.00	www.schooloutfitter.com
2,646.00	\$ 632,394.00	www.dell.com
11.70	\$ 1,099.80	www.schooloutfitter.com
279.00	\$ 20,088.00	www.buyonlinenow.com
150.00	\$ 315,000.00	www.schooloutfitter.com
320.00	\$ 34,560.00	www.atdamencan.com
403.48	\$ 36,313.20	www.atdamencan.com
198.90	\$ 17,901.00	www.staples.com
300.00	\$ 27,000.00	www.schooloutfitter.com
10.90	\$ 981.00	www.united-states-flag.com
241.73	\$ 8,218.82	www.usmarkerboard.com
10.90	\$ 981.00	www.united-states-flag.com
200.00	\$ 12,000.00	www.homedepot.com
199.95	\$ 1,999.50	www.enasco.com
35.00	\$ 5,530.00	Blaze Out
353.45	\$ 1,767.25	www.enasco.com
2,290.00	\$ 4,580.00	www.enasco.com
\$ 159.95	\$ 20,313.65	www.ergoindemand.com
68.00	\$ 8,160.00	www.virco.com
18.96	\$ 568.80	www.wardsci.com
168.95	\$ 168.95	www.wardsci.com
18.95	\$ 568.50	www.wardsci.com
250.00	\$ 500.00	www.wardsci.com
9.75	\$ 585.12	www.wardsci.com
15.35	\$ 921.00	www.wardsci.com
10.55	\$ 633.00	www.wardsci.com
38.85	\$ 1,554.00	www.wardsci.com
27.75	\$ 1,110.00	www.wardsci.com
85.00	\$ 170.00	www.wardsci.com

Unit Cost	Total Cost	Equipment Source
595.00	\$ 595.00	www.carolina.com
8.95	\$ 214.80	www.wardsci.com
199.00	\$ -	www.wardsci.com
6.15	\$ -	www.wardsci.com
675.00	\$ 2,700.00	www.carolina.com
4.25	\$ 17.00	www.wardsci.com
219.00	\$ 876.00	www.wardsci.com
21.75	\$ -	www.wardsci.com
89.00	\$ -	www.wardsci.com
300.00	\$ -	Feather and Fins
299.99	\$ 1,199.96	www.carolina.com
285.00	\$ -	www.carolina.com
285.00	\$ -	www.carolina.com
185.50	\$ 3,710.00	www.carolina.com
170.00	\$ 3,400.00	www.carolina.com
495.00	\$ 9,900.00	www.carolina.com
49.99	\$ 1,499.70	www.carolina.com
\$ 960.00	\$ 30,720.00	
\$ 95.00	\$ 3,800.00	
\$ 175.00	\$ 5,250.00	
\$ 135.00	\$ 270.00	www.united-states-flag.com
51.25	\$ 256.25	www.paradestore.com
634.00	\$ 2,536.00	www.ergoindemand.com
\$ 135.00	\$ 270.00	www.united-states-flag.com
53.95	\$ -	www.paradestore.com
\$ 31.50	\$ 1,102.50	www.paradestore.com
949.00	\$ 949.00	www.ardamerican.com
1,500.00	\$ 3,000.00	www.zzounds.com
300.00	\$ 300.00	www.schooloutfitters.com
352.10	\$ 704.20	www.flaghouse.com
360.00	\$ -	www.paradestore.com
23.95	\$ 143.70	www.paradestore.com
\$ 2,646.00	\$ 15,876.00	www.dell.com

Unit Cost	Total Cost	Equipment Source
\$ 3,000.00	\$ 3,000.00	www.schooloutfitters.com
\$ 330.00	\$ -	www.music123.com
\$ 2,500.00	\$ 2,500.00	www.wbw.com
\$ 5,800.00	\$ -	www.samash.com
\$ 1,525.00	\$ -	www.azmusiccenter.com
\$ 200.00	\$ 8,000.00	www.marchingworld.com
\$ 5,000.00	\$ -	www.wbw.com
\$ 24.50	\$ -	www.wbw.com
\$ 280.00	\$ 560.00	www.samash.com
\$ 1,500.00	\$ -	www.samash.com
\$ 530.00	\$ 530.00	www.wbw.com
\$ 700.00	\$ 1,400.00	www.music123.com
\$ 17.00	\$ 34.00	www.music123.com
\$ 1,000.00	\$ -	www.samash.com
\$ 23.95	\$ -	www.marchingworld.com
\$ 250.00	\$ -	www.samash.com
\$ 540.00	\$ 1,080.00	www.azmusiccenter.com
\$ 435.35	\$ -	www.azmusiccenter.com
\$ 285.00	\$ -	www.schooloutfitters.com
\$ 20.00	\$ -	www.samash.com
\$ 563.00	\$ -	www.samash.com
\$ 299.00	\$ 598.00	www.samash.com
\$ 20.00	\$ 120.00	www.samash.com
\$ 269.99	\$ -	www.musiciansfriend.com
\$ 84.99	\$ -	www.musiciansfriend.com
\$ 89.99	\$ 269.97	www.directorschair.com
\$ 39.99	\$ 79.98	www.musiciansfriend.com
\$ 161.00	\$ 322.00	www.samash.com
\$ 199.99	\$ 399.98	www.musiciansfriend.com
\$ 300.00	\$ 600.00	www.samash.com
\$ 12.99	\$ 129.90	www.music123.com
\$ 380.00	\$ 760.00	www.music123.com
\$ 2,100.00	\$ 2,100.00	www.wbw.com
\$ 1,721.55	\$ -	www.wbw.com
\$ 2,100.00	\$ -	www.wbw.com
\$ 80.00	\$ 80.00	www.music123.com

Unit Cost	Total Cost	Equipment Source
\$ 5.30	\$ 53.00	www.music123.com
\$ 5.30	\$ 53.00	www.music123.com
\$ 150.00	\$ 150.00	www.music123.com
\$ 199.00	\$ 199.00	www.music123.com
\$ 44.00	\$ -	www.samash.com
\$ 589.99	\$ 589.99	www.marchingworld.com
\$ 2,700.00	\$ -	www.ywbw.com
\$ 10,000.00	\$ 10,000.00	www.samash.com
\$ 2,646.00	\$ 7,938.00	www.dell.com
\$ 300.00	\$ 600.00	www.usmarkerboard.com
\$ 30.00	\$ 1,050.00	www.usmarkerboard.com
\$ 8,000.00	\$ -	www.samash.com
\$ 8,000.00	\$ -	www.samash.com
\$ 50.00	\$ 2,000.00	www.samash.com
\$ 350.00	\$ -	www.samash.com
\$ 1,000.00	\$ 1,000.00	www.samash.com

Unit Cost	Total Cost	Equipment Source
		Micro Office
\$ 1,114.00	\$	
\$ 79.99	\$ 79.99	www.hp.com
\$ 18.00	\$ 108.00	www.samash.com
\$ 18.00	\$	www.samash.com
\$ 8.99	\$ 53.94	www.azmusiccenter.com
\$ 14.00	\$ 84.00	www.samash.com
\$ 14.00	\$	www.samash.com
\$ 979.00	\$	www.samash.com
\$ 300.00	\$ 1,800.00	www.music123.com
\$ 159.00	\$	www.music123.com
\$ 44.99	\$	www.music123.com
\$ 1,799.00	\$	www.wvbw.com
\$ 299.00	\$	www.wvbw.com
\$ 5,038.00	\$ 10,076.00	www.33office.com
\$ 399.00	\$ 798.00	www.theaterseats.com
\$ 279.00	\$ 558.00	www.buynonline.com
\$ 829.00	\$	www.wvbw.com
\$ 16.95	\$	www.wvbw.com
\$ 300.00	\$ 600.00	www.schooloutfitters.com
\$ 249.99	\$	www.music123.com
\$ 4,000.00	\$	www.wvbw.com
\$ 20.00	\$	www.wvbw.com
\$ 1,200.00	\$	www.wvbw.com
\$ 4,000.00	\$	www.wvbw.com
\$ 1,139.00	\$	www.wvbw.com
\$ 267.00	\$	www.wvbw.com
\$ 179.00	\$ 716.00	www.wvbw.com
\$ 15.49	\$	www.music123.com
\$ 2,159.00	\$	www.wvbw.com
\$ 3,495.00	\$ 6,990.00	www.music123.com
\$ 169.00	\$	www.music123.com
\$ 559.00	\$	www.music123.com
\$ 200.00	\$ 400.00	www.samash.com
\$ 200.00	\$ 400.00	www.samash.com
\$ 500.00	\$ 1,000.00	www.samash.com

Unit Cost	Total Cost	Equipment Source
\$ 3,000.00	\$ -	www.samash.com
\$ 2,000.00	\$ -	www.samash.com
\$ 700.00	\$ -	www.samash.com
\$ 1,200.00	\$ -	www.samash.com
\$ 2,500.00	\$ -	www.samash.com
\$ 3,700.00	\$ -	www.samash.com
\$ 1,600.00	\$ -	www.samash.com
\$ 2,800.00	\$ -	www.samash.com
\$ 1,600.00	\$ -	www.samash.com
\$ 1,200.00	\$ -	www.samash.com
\$ 1,200.00	\$ -	www.samash.com
\$ 6,000.00	\$ -	www.samash.com
\$ 2,800.00	\$ -	www.samash.com
\$ 2,500.00	\$ -	www.samash.com
\$ 2,500.00	\$ 2,500.00	www.samash.com
\$ 500.00	\$ 500.00	www.samash.com
\$ 375.00	\$ 375.00	www.samash.com
\$ 139.00	\$ -	www.samash.com
\$ 799.00	\$ 799.00	www.samash.com
\$ 199.00	\$ -	www.samash.com
\$ 18,000.00	\$ -	www.samash.com
\$ 343.00	\$ -	www.samash.com
\$ 60.00	\$ -	www.wvbw.com
\$ 500.00	\$ -	www.schooloutfitters.com
\$ 10,000.00	\$ 10,000.00	www.wvbw.com
\$ 1,200.00	\$ 1,200.00	www.wvbw.com
\$ 200.00	\$ -	www.wengercorp.com
\$ 1,200.00	\$ 1,200.00	www.crutfield.com
\$ 109.00	\$ 872.00	www.crutfield.com
\$ 323.99	\$ 2,591.92	www.crutfield.com
\$ 264.00	\$ 3,432.00	www.crutfield.com
\$ 14,500.00	\$ 14,500.00	www.atdamencan.com
\$ 8,000.00	\$ -	Town House
\$ 400.00	\$ 800.00	www.wvbw.com

Unit Cost	Total Cost	Equipment Source
\$ 199.00	\$ 199.00	www.ilaghouse.com
\$ 4,254.00	\$ 8,508.00	www.gophersport.com
\$ 1,595.00	\$ -	www.gophersport.com
\$ 983.00	\$ -	www.schoolhealth.com
\$ 309.00	\$ 618.00	www.gophersport.com
\$ 329.00	\$ 658.00	www.gophersport.com
\$ 34.95	\$ 34.95	www.gophersport.com
\$ 37.95	\$ 569.25	www.gophersport.com
\$ 2.95	\$ 29.50	www.gophersport.com
\$ 22.95	\$ 114.75	www.gophersport.com
\$ 40.00	\$ 200.00	www.gophersport.com
\$ 195.00	\$ 195.00	www.gophersport.com
\$ 849.00	\$ 849.00	www.gophersport.com
\$ 139.00	\$ 278.00	www.gophersport.com
\$ 89.95	\$ 179.90	www.gophersport.com
\$ 219.00	\$ 438.00	www.gophersport.com
\$ 145.00	\$ 145.00	www.gophersport.com
\$ 145.00	\$ 145.00	www.gophersport.com
\$ 145.00	\$ 145.00	www.gophersport.com
\$ 145.00	\$ 145.00	www.gophersport.com
\$ 189.00	\$ 756.00	www.gophersport.com
\$ 26.95	\$ 404.25	www.gophersport.com
\$ 519.00	\$ 5,190.00	www.gophersport.com
\$ 129.00	\$ 774.00	www.gophersport.com
\$ 10.95	\$ 21.90	www.gophersport.com
\$ 165.00	\$ 330.00	www.gophersport.com
\$ 159.00	\$ 954.00	www.gophersport.com
\$ 22.95	\$ -	www.gophersport.com
\$ 22.95	\$ -	www.gophersport.com
\$ 22.95	\$ -	www.gophersport.com
\$ 22.95	\$ -	www.gophersport.com
\$ 69.95	\$ 139.90	www.gophersport.com
\$ 352.10	\$ 1,408.40	www.gophersport.com
\$ 219.00	\$ 438.00	www.gophersport.com
\$ 36.95	\$ -	www.gophersport.com

Unit Cost	Total Cost	Equipment Source
\$ 2.50	\$ 30.00	www.gophersport.com
\$ 10.95	\$ 262.80	www.gophersport.com
\$ 50.00	\$ 400.00	www.gophersport.com
\$ 18.00	\$ 216.00	www.gophersport.com
\$ 7,000.00	\$ 7,000.00	www.gophersport.com
\$ 26.95	\$ 539.00	www.gophersport.com
\$ 90.00	\$ 180.00	www.gophersport.com
\$ 1,085.00	\$ 2,170.00	www.gophersport.com
\$ 759.00	\$ 1,518.00	www.gophersport.com
\$ 34.95	\$ 174.75	www.gophersport.com
\$ 409.00	\$ 818.00	www.gophersport.com
\$ 25.95	\$ 25.95	www.gophersport.com
\$ 45.95	\$ 91.90	www.gophersport.com
\$ 320.00	\$ -	www.atdamerican.com
\$ 403.48	\$ -	www.atdamerican.com
\$ 198.90	\$ -	www.atdamerican.com
\$ 84.95	\$ 84.95	www.gophersport.com
\$ 119.00	\$ 238.00	www.gophersport.com
\$ 16.95	\$ 67.80	www.gophersport.com
\$ 429.00	\$ 429.00	www.gophersport.com
\$ 1,195.00	\$ 2,390.00	www.gophersport.com
\$ 94.95	\$ -	www.gophersport.com
\$ 99.00	\$ 198.00	www.gophersport.com
\$ 238.99	\$ 477.98	www.gophersport.com
\$ 32.95	\$ 494.25	www.gophersport.com
\$ 299.00	\$ 1,196.00	www.gophersport.com
\$ 360.00	\$ 1,440.00	www.akathletics.com
\$ 4,844.00	\$ 19,376.00	www.alfaxfurniture.com
\$ 4,500.00	\$ 4,500.00	www.sporttime.com
\$ 19.99	\$ 79.96	www.kmart.com
\$ 29.99	\$ 299.90	www.sporttime.com
\$ 995.00	\$ -	www.gophersport.com
\$ 85.99	\$ 171.98	www.gophersport.com
\$ 238.99	\$ 477.98	www.gophersport.com
\$ 81.00	\$ 162.00	www.gophersport.com

Unit Cost	Total Cost	Equipment Source
\$ 800.00	\$ 1,600.00	www.gophersport.com
\$ 40.00	\$ 80.00	www.gophersport.com
\$ 495.00	\$ 990.00	www.gophersport.com
\$ 149.00	\$ 298.00	www.gophersport.com
\$ 149.00	\$ 894.00	www.gophersport.com
\$ 84.95	\$ 169.90	www.gophersport.com
\$ 1,700.00	\$ 1,700.00	www.gophersport.com
\$ 596.85	\$ 1,193.70	www.gophersport.com
\$ 519.00	\$ 5,190.00	www.gophersport.com
\$ 379.00	\$ 1,516.00	www.gophersport.com
\$ 287.00	\$ 1,148.00	www.gophersport.com
\$ 189.00	\$ 756.00	www.gophersport.com
\$ 820.00	\$ 820.00	www.gophersport.com
\$ 344.00	\$ 1,376.00	www.gophersport.com
\$ 249.00	\$ 249.00	www.gophersport.com
\$ 345.00	\$ 345.00	www.gophersport.com
\$ 389.00	\$ 778.00	www.gophersport.com
\$ 499.00	\$ 998.00	www.gophersport.com
\$ 39.95	\$ 39.95	www.gophersport.com
\$ 169.00	\$ 169.00	www.gophersport.com
\$ 299.00	\$ 299.00	www.gophersport.com
\$ 7.95	\$ 238.50	www.gophersport.com
\$ 5.95	\$ 178.50	www.gophersport.com
\$ 185.00	\$ 1,110.00	www.gophersport.com
\$ 79.95	\$ 479.70	www.gophersport.com
\$ 239.00	\$ 239.00	www.gophersport.com
\$ 239.00	\$ 239.00	www.gophersport.com
\$ 1,159.00	\$ 2,318.00	www.gophersport.com
\$ 325.00	\$ 325.00	www.gophersport.com
\$ 79.95	\$ 79.95	www.gophersport.com
\$ 84.95	\$ 254.85	www.gophersport.com
\$ 599.00	\$ 3,594.00	www.gophersport.com
\$ 29.95	\$ 29.95	www.gophersport.com
\$ 5.95	\$ 5.95	www.gophersport.com
\$ 159.00	\$ 159.00	www.gophersport.com
\$ 169.00	\$ 169.00	www.gophersport.com
\$ 99.95	\$ 99.95	www.gophersport.com
\$ 749.00	\$ 749.00	www.gophersport.com
\$ 209.00	\$ 209.00	www.gophersport.com

Unit Cost	Total Cost	Equipment Source
\$ 44.95	\$ 89.90	www.gophersport.com
\$ 54.95	\$ 109.90	www.gophersport.com
\$ 13.95	\$ 167.40	www.gophersport.com
\$ 199.00	\$ 199.00	www.gophersport.com
	\$ -	
\$ 119.00	\$ 357.00	www.gophersport.com
\$ 639.00	\$ 7,668.00	www.gophersport.com
\$ 179.00	\$ 358.00	www.gophersport.com
\$ 1,695.00	\$ 1,695.00	www.gophersport.com
\$ 179.00	\$ 179.00	www.gophersport.com
\$ 369.00	\$ 369.00	
\$ 1,499.00	\$ 1,499.00	dickssportinggoods.com
\$ 1,825.00	\$ 1,825.00	www.ten-o.com
\$ 796.00	\$ 796.00	www.ten-o.com
\$ 303.00	\$ 303.00	www.ten-o.com
\$ 145.00	\$ 145.00	www.gophersport.com
\$ 59.95	\$ 59.95	www.gophersport.com
\$ 239.00	\$ 478.00	www.gophersport.com
\$ 29.95	\$ 778.70	www.gophersport.com
\$ 29.95	\$ 119.80	www.gophersport.com
\$ 4.50	\$ 108.00	www.gophersport.com
\$ 239.00	\$ 239.00	www.gophersport.com
\$ 4.50	\$ 108.00	www.gophersport.com
\$ 99.95	\$ 99.95	www.gophersport.com
\$ 64.95	\$ 64.95	www.gophersport.com
\$ 26.25	\$ 315.00	
	\$ -	
\$ 64.95	\$ -	www.gophersport.com
	\$ -	
\$ 320.00	\$ 320.00	www.atdamerica.com
	\$ -	
\$ 259.00	\$ 259.00	www.gophersport.com
\$ 349.00	\$ 349.00	www.gophersport.com
\$ 239.00	\$ 239.00	www.gophersport.com
\$ 19.95	\$ 19.95	www.gophersport.com
\$ 19.95	\$ 19.95	www.gophersport.com
\$ 1,795.00	\$ 1,795.00	www.gophersport.com

Unit Cost	Total Cost	Equipment Source
\$ 439.00	\$ 439.00	www.gophersport.com
	\$ -	
\$ 5.75	\$ 138.00	www.eNasco.com
\$ 3,995.00	\$ 3,995.00	www.gophersport.com
\$ 509.00	\$ 509.00	www.gophersport.com
\$ 395.00	\$ 2,370.00	Flaghouse
\$ 320.00	\$ 640.00	www.atdamerica.com
\$ 279.00	\$ 558.00	www.buyonlinenow.com
\$ 2,879.00	\$ 2,879.00	www.gophersport.com
	\$ -	
\$ 389.00	\$ 389.00	www.gophersport.com
\$ 879.00	\$ 15,822.00	www.gophersport.com
\$ 403.48	\$ 1,210.44	
\$ 320.00	\$ 960.00	www.atdamerica.com
\$ 198.90	\$ 198.90	www.staples.com
\$ 12.00	\$ 72.00	www.kmart.com
\$ 403.00	\$ 1,209.00	
\$ 699.00	\$ 699.00	
\$ 320.00	\$ 960.00	www.atdamerica.com
\$ 198.90	\$ 596.70	www.staples.com
\$ 279.00	\$ 279.00	www.buyonlinenow.com
\$ 144.95	\$ 144.95	Micro Office
\$ 2,646.00	\$ 674,730.00	www.dell.com
\$ 1,500.00	\$ 66,000.00	www.dell.com
\$ 949.00	\$ 30,368.00	www.atdamencan.com
\$ 528.95	\$ 71,937.20	www.hp.com

Unit Cost	Total Cost	Equipment Source
\$ 374.00	\$	Micro Office
\$ 841.00	\$	Micro Office
\$ 68.00	\$ 5,576.00	www.virco.com
\$ 320.00	\$ 5,760.00	www.atdamerican.com
\$ 403.48	\$ 403.48	www.atdamerican.com
\$ 198.90	\$	www.staples.com
\$ 168.90	\$ 2,871.30	www.staples.com
\$ 285.00	\$	www.schooloutfitters.com
\$ 339.00	\$	www.officefurniture.com
\$ 89.00	\$ 7,654.00	www.schooloutfitters.com
\$ 450.00	\$ 1,800.00	www.homedepot.com
\$ 279.00	\$ 558.00	www.buyonline.com
\$ 68.00	\$ 16,320.00	www.virco.com
\$ 320.00	\$ 640.00	www.atdamerican.com
\$ 403.48	\$ 806.96	www.atdamerican.com
\$ 198.90	\$	www.atdamerican.com
\$ 379.00	\$ 379.00	www.homedepot.com
\$ 168.90	\$ 1,013.40	www.schooloutfitters.com
\$ 224.11	\$ 5,602.75	www.motorola.com
\$ 198.90	\$ 1,989.00	www.staples.com
\$ 419.00	\$ 2,095.00	www.atdamerican.com
\$ 285.00	\$ 3,990.00	www.schooloutfitters.com
\$ 2,646.00	\$ 26,460.00	www.dell.com
\$ 2,310.00	\$ 4,620.00	www.elison.com
\$ 1,099.00	\$ 9,891.00	www.schooloutfitters.com
\$ 949.00	\$ 2,847.00	www.atdamerican.com
\$ 233.00	\$ 4,660.00	www.schooloutfitters.com
\$ 440.00	\$ 2,200.00	www.highsmith.com
\$ 912.85	\$ 2,738.55	www.usmarkerboard.com
\$ 528.95	\$ 4,760.55	www.hp.com

Unit Cost	Total Cost	Equipment Source
\$ 450.00	\$ 450.00	www.homedepot.com
\$ 52.00	\$ 832.00	www.schooloutfitters.com
\$ 52.00	\$ 4,680.00	www.schooloutfitters.com
\$ 246.00	\$ 2,952.00	www.schooloutfitters.com
\$ 101,100.00	\$ 101,100.00	E-Rate /Pacific Data Systems
\$ 989.00	\$ 2,967.00	www.atdamerican.com
\$ 352.00	\$ 1,760.00	Micro School p.169
\$ 225.00	\$ 450.00	Micro School p.169
\$ 285.00	\$ 1,140.00	www.schooloutfitters.com
\$ 279.00	\$ 1,395.00	www.buyonline.com
\$ 68.00	\$ -	www.virco.com
\$ 159.95	\$ 799.75	www.ergondemand.com
\$ 149.00	\$ 7,152.00	www.atdamerican.com
\$ 325.00	\$ 3,575.00	National Office p.16
\$ 352.00	\$ 6,688.00	Micro School p.169
\$ 225.00	\$ 4,275.00	Micro School p.169
\$ 149.50	\$ 598.00	Micro School AV 2007 p.185
\$ 285.00	\$ 1,710.00	www.schooloutfitters.com
\$ 161.40	\$ 484.20	www.schooloutfitters.com
\$ 279.00	\$ 837.00	www.buyonline.com
\$ 68.00	\$ -	www.virco.com
\$ 159.95	\$ 1,759.45	www.ergondemand.com
\$ 168.90	\$ 337.80	www.staples.com
\$ 198.90	\$ 2,585.70	www.staples.com
\$ 508.00	\$ -	www.schooloutfitters.com
\$ 874.00	\$ -	www.schooloutfitters.com
\$ 419.00	\$ -	www.schooloutfitters.com
\$ 285.00	\$ 570.00	www.schooloutfitters.com
\$ 68.00	\$ -	www.virco.com

Unit Cost	Total Cost	Equipment Source
\$ 320.00	\$ 2,880.00	www.atdamerican.com
\$ 403.48	\$ 2,017.40	www.atdamerican.com
\$ 325.00	\$ 2,275.00	National Office p.16

Unit Cost	Total Cost	Equipment Source
\$ 168.90	\$ -	www.staples.com
\$ 198.90	\$ -	www.staples.com
\$ 339.00	\$ 339.00	www.officefurniture.com
\$ 285.00	\$ -	www.schooloutfitters.com
\$ 68.00	\$ -	www.virco.com
\$ 320.00	\$ -	www.atdamerican.com
\$ 403.48	\$ -	www.atdamerican.com
\$ 168.90	\$ 506.70	www.staples.com
\$ 198.90	\$ 795.60	www.staples.com
\$ 589.00	\$ 589.00	www.mybinding.com
\$ 339.00	\$ 339.00	www.officefurniture.com
\$ 22.99	\$ 91.96	www.americanhotel.com
\$ 140.00	\$ 140.00	www.americanhotel.com
\$ 349.00	\$ 349.00	National Office p.15
\$ 1,295.00	\$ 5,180.00	www.usmarkerboard.com
\$ 285.00	\$ 570.00	www.schooloutfitters.com
\$ 912.85	\$ 912.85	www.usmarkerboard.com
\$ 143.58	\$ 430.74	www.usmarkerboard.com
\$ 195.00	\$ 3,510.00	National Office p.24
\$ 320.00	\$ 1,280.00	www.atdamerican.com
\$ 403.48	\$ 1,613.92	www.atdamerican.com
\$ 159.95	\$ 159.95	www.ergoindemand.com
	\$ -	
\$ 2,613.99	\$ 7,841.97	www.bluedogin.com
\$ 24.99	\$ 749.70	www.homedepot.com
\$ 199.95	\$ -	www.pcconnection.com
\$ 168.90	\$ 337.80	www.staples.com
\$ 198.90	\$ 397.80	www.staples.com
\$ 195.00	\$ 390.00	National Office p.24

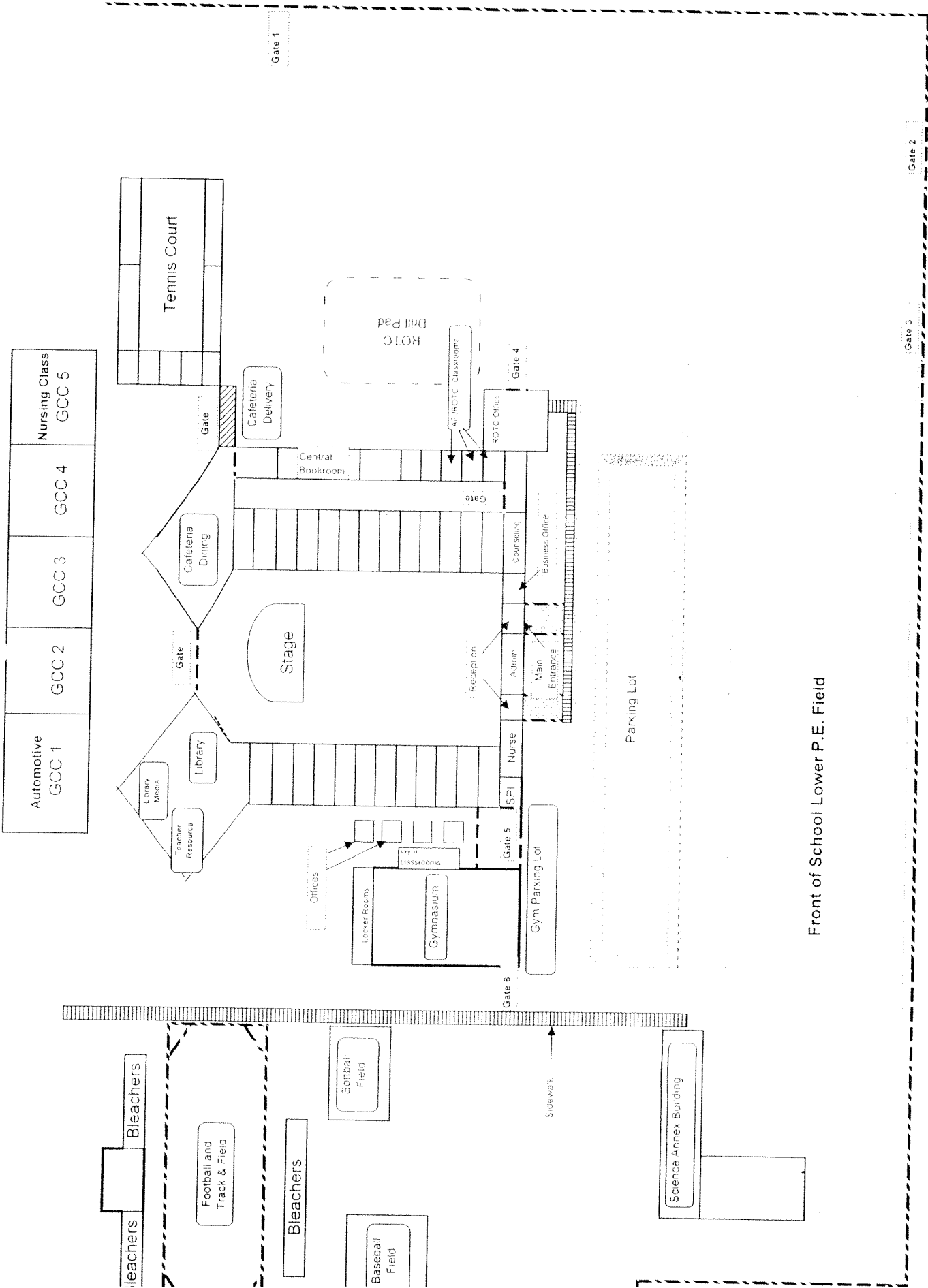
Unit Cost	Total Cost	Equipment Source
\$ 320.00	\$ 640.00	www.atdamerican.com
\$ 403.48	\$ 806.96	www.atdamerican.com

Unit Cost	Total Cost	Equipment Source
\$ 168.90	\$ 6,756.00	www.staples.com
\$ 198.90	\$ 795.60	www.staples.com
\$ 983.00	\$ 4,915.00	www.schoolhealth.com
\$ 168.95	\$ 844.75	www.schoolhealth.com
\$ 348.00	\$ 1,392.00	Macgill 2007 p 76
\$ 639.00	\$ 639.00	Macgill 2007 p 129
\$ 359.00	\$ 1,795.00	www.homedepot.com
\$ 185.00	\$ 740.00	Macgill 2007 p 133
\$ 239.99	\$ 4,799.80	www.americanhotel.com
\$ 472.64	\$ 2,363.20	www.schoolhealth.com
\$ 159.99	\$ 799.95	www.americanhotel.com
\$ 469.99	\$ 2,349.95	www.schoolhealth.com
\$ 169.99	\$ 849.95	www.americanhotel.com
\$ 450.00	\$ 2,700.00	www.homedepot.com
\$ 29.99	\$ 179.94	www.schoolhealth.com
\$ 129.95	\$ 129.95	www.schoolhealth.com
\$ 168.95	\$ 1,013.70	www.schoolhealth.com
\$ 13.99	\$ 139.90	www.schoolhealth.com
\$ 195.00	\$ 975.00	National Office p 24
\$ 1,300.00	\$ 5,200.00	www.schoolhealth.com
\$ 645.00	\$ 9,675.00	www.schoolhealth.com
\$ 320.00	\$ 4,800.00	www.ardamerican.com
\$ 403.48	\$ 20,174.00	www.ardamerican.com
\$ 89.94	\$ 1,349.10	www.macgill.com
\$ 55.00	\$ 275.00	www.schoolhealth.com
\$ 2,062.95	\$	www.schoolhealth.com
\$ 379.00	\$ 1,895.00	www.homedepot.com
\$ 165.00	\$ 1,650.00	www.schoolhealth.com
\$ 199.99	\$ 5,999.70	www.schoolhealth.com
\$ 27.95	\$ 279.50	www.schoolhealth.com
\$ 29.95	\$ 569.05	www.homedepot.com
\$ 19.99	\$ 959.52	www.homedepot.com
\$ 19.50	\$	www.schoolhealth.com

Unit Cost	Total Cost	Equipment Source
\$ 1,500.00	\$ 30,000.00	www.enasco.com
\$ 539.99	\$ 2,159.96	www.enasco.com
\$ 19.99	\$ 999.50	www.enasco.com
\$ 28.99	\$ 1,449.50	www.enasco.com
\$ 28.99	\$ 28,990.00	www.enasco.com
\$ 16.69	\$ 166.90	www.enasco.com
\$ 16.69	\$ 166.90	www.enasco.com
\$ 13.97	\$ 69.85	www.enasco.com
\$ 7.29	\$ 21.87	www.enasco.com
\$ 5.39	\$ 26.95	www.enasco.com
\$ 9.54	\$ 47.70	www.enasco.com
\$ 54.00	\$ 108.00	www.enasco.com
\$ 191.00	\$ 191.00	www.enasco.com
\$ 46.09	\$ 460.90	www.enasco.com
\$ 55.39	\$ 55.39	www.enasco.com
\$ 16.25	\$ 32.50	www.enasco.com
\$ 43.25	\$ 43.25	www.enasco.com
\$ 116.75	\$ 116.75	www.enasco.com
\$ 33.49	\$ -	www.enasco.com
\$ 33.38	\$ 267.04	www.enasco.com
\$ 1,002.83	\$ 1,002.83	www.enasco.com
\$ 124.95	\$ 749.70	www.schooloutfitters.com

Unit Cost	Total Cost	Equipment Source
\$ 899.00	\$ 6,293.00	Brodart p.571
\$ 264.90	\$ 794.70	www.atdamen.com
\$ 448.00	\$ 448.00	Brodart p.460
\$ 1,150.00	\$ 5,750.00	www.atdamen.com
\$ 100.00	\$ 100.00	www.schooloutfitters.com
\$ 12,523.00	\$ 125,230.00	Brodart p.868-869
\$ 2,646.00	\$ 7,938.00	www.dell.com
\$ 200.00	\$ 200.00	www.crutchfield.com
\$ 153.00	\$ 153.00	Brodart p.552
\$ 1,704.00	\$ 1,704.00	www.highsmith.com
\$ 11,591.25	\$ 34,773.75	www.highsmith.com
\$ 949.00	\$ 949.00	www.highsmith.com
\$ 475.00	\$ 3,325.00	www.highsmith.com
\$ 168.90	\$ 168.90	www.highsmith.com
\$ 440.00	\$ 1,320.00	www.highsmith.com
\$ 585.00	\$ 1,755.00	Brodart p.763
\$ 325.00	\$ 1,625.00	National Office p.16
\$ 528.95	\$ 12,694.80	www.hp.com
\$ 198.90	\$ -	www.highsmith.com
\$ 1,309.00	\$ 26,180.00	Brodart p.717
\$ 161.40	\$ 32,280.00	www.highsmith.com
\$ 68.00	\$ 340.00	www.highsmith.com
\$ 246.00	\$ 1,722.00	www.highsmith.com
\$ 189.95	\$ 569.85	www.highsmith.com
\$ 169.00	\$ 338.00	Brodart p.484
\$ 59.95	\$ 839.30	Brodart p.460
\$ 323.99	\$ 4,535.86	www.highsmith.com
\$ 109.00	\$ 1,308.00	www.highsmith.com
\$ 15.00	\$ -	www.schooloutfitters.com
\$ 168.90	\$ 1,182.30	www.staples.com
\$ 198.90	\$ 994.50	www.staples.com

Unit Cost	Total Cost	Equipment Source
\$ 195.00	\$ 390.00	National Office p.24
\$ 320.00	\$ 640.00	www.atdamerican.com
\$ 403.48	\$ -	www.atdamerican.com
88.11	\$ 7,929.90	www.vivomounts.com
\$ 46.09	\$ 921.80	www.enasco.com
\$ 55.39	\$ 332.34	www.enasco.com
\$ 1,002.83	\$ 3,008.49	www.enasco.com
\$ 165.00	\$ 165.00	www.schoolhealth.com
\$ 57.39	\$ 5,165.10	www.psjanitorial.com
\$ 65.00	\$ 650.00	www.jansup.com
\$ 1,805.56	\$ 3,611.12	www.psjanitorial.com
\$ 126.14	\$ 252.28	www.psjanitorial.com
\$ 124.00	\$ 1,860.00	www.jansup.com
\$ 19.99	\$ 999.50	www.psjanitorial.com
	\$ 3,193,655.89	
	\$ 479,048.38	
	\$ 3,672,704.27	



Front of School Lower P.E. Field

**Construction of New John F. Kennedy High School
Finance, Demolition, Design, Build, Maintain, Leaseback (FDDDBML)
TECHNICAL SPECIFICATIONS
Project No. 700-5-1020-L-TAM**

Attachment "C"

I. BUILDING SYSTEMS, MATERIALS AND EQUIPMENT

The following descriptions and comparisons are organized by specification section. Civil, structural, mechanical and electrical discussion follow the architectural section.

Building construction shall be cast-in-place concrete or CMU walls and concrete topping for floor or roof slabs.

A. Architectural

1. Miscellaneous Metals

- a. Stainless steel will be used to provide the best longevity for all exposed metals. Interior miscellaneous metals will be galvanized or prime coated steel.
- b. Concrete trellis must be utilized for classrooms window shading.

2. Carpentry

Hardwood shall be used for finish carpentry such as casework, doors and trim. Casework will be wood veneer faced with plastic laminate counter tops. Interior wood blocking will be treated lumber.

3. Insulation

- a. The model energy code allows an overall thermal value with an OTV not to exceed 27.8 btu/sf. On this basis, a roof U-value of 0.10 (R-10) is adequate without any need for wall insulation.
- b. Roof insulation will be placed inside the building to avoid the need to protect it from the elements. For spaces with ceilings, unfaced 2-

1/2" fiberglass board insulation pin impaled to the underside of the roof must be used.

- c. For the Hallways without ceilings (exposed structure), spray applied cementitious insulation will be used.

4. Roofing

Roofing materials over concrete slabs will be fluid-applied urethane. A heavy-duty multithane roof coating, 65 mils thick (off-white color) shall be used or approved equal. Manufacturer will provide a 5-year warranty and shall be installed by a certified roof specialist.

5. Windows, Exterior Doors and Glazing

- a. Exterior windows and louvers will be aluminum with a color polyester (Kynar) finish. Fire-rated interior openings will have steel windows
- b. Exterior doors and frames will be aluminum entrance door. Interior doors will be solid core door wood with for paint finish veneer.
- c. Exterior glazing will be laminated security glass. Provide typhoon shutters for exterior window and doors.

6. Floor Finishes

Unglazed ceramic tiles will be used at classrooms, multi-used room, library and administrative areas. The service kitchen, serving line area and entrance locations for the classroom building will be quarry tile. Toilet rooms floors will be ceramic tiles. Exposed natural concrete at the mechanical/electrical rooms, bulk storage and exterior walkways will be sealed with a penetrating sealer.

7. Exterior Wall Finish

Exterior walls finish will be fair-faced concrete with a paint finish. Paint will be 100% acrylic emulsion by manufacturers providing a tropical formulation.

Attachment "C"

Construction of New John F. Kennedy High School
Finance, Demolition, Design, Build, Maintain, Leaseback (FDDDBML)
Project No. 700-5-1020-L-TAM

8. Ceilings

Classrooms, administration, nurse's office and library ceilings and portions of the corridors will be 2' x 4' acoustical tile on metal suspension system. An open ceiling with exposed insulation, ductwork and lighting will be provided at hallways and the multi-use/cafeteria.

9. Toilet and Restrooms

Floors 8"x8" non-skid ceramic tiles and walls will receive 8" x 8" ceramic tiles. Lavatory counters will be concrete faced. Toilet partitions will be concrete.

10. Fire Protection

Portable fire extinguishers will be provided at each classroom, kitchen, other occupied areas, mechanical/electrical rooms and at exit ways. Fire extinguisher cabinets serving public areas will be at secure locations or in locked cabinets. Extinguishers will 12-lb. multiple purpose dry chemical extinguisher (light hazard). Electrical room and mechanical rooms will have 10-lb bracket mounted multiple purpose dry chemical extinguisher. Extinguishers will be located within a maximum travel distance of 75-feet.

11. Signage

- a. An exterior school identification sign shall be installed. Additionally, individual building and room identification signage will be specified.
- b. Two flagpoles will be provided. They will be aluminum, clear finish, 30-foot exposed height, ground set with an external halyard system. One each 5 x 8 American and Guam flag shall be provided.

B. Civil

1. Storm Drainage Systems

- a. Runoffs considered in this design for disposal into percolation basins are from the developed area. Runoffs from undeveloped area of the properties will drain as is or remain on its present condition.
- b. The site drainage system will utilize underground percolation fields below play and landscape areas. The design of these percolation

fields are based on a 20-year (5% exceedance) storm.

c. Surface runoffs will be collected by means of drain inlets or catch basins. Underground drainage pipes will be used to convey storm water from inlets to outlets. If needed, surface drainage swales and ditches will also be provided. These swales and ditches, if deemed necessary, will be provided with concrete lining or grouted rip-rap stones to prevent erosion.

d. Ponding Basin

2. Water Service

a. Contractor shall verify closest waterline connection.

b. Contractor is responsible for the connection and upgrading of waterline to comply with GWA requirements.

4. Wastewater System Improvements

a. Contractor shall verify closest sewer line connection.

5. Drop-Off Areas (Bus and Car)

a. The project site must have entry and exit points. Appropriate pavement marking and signs must be provided to designate the intended flow of traffic within these drop-off areas.

b. Bus loading and unloading.

C. Structural Systems

1. Structural Design Criteria will be as follows:

U.B.C. - Uniform Building Code 2000

Building code Requirements for Structural Concrete (ACI 318-95)

a. Dead Loading

Normal Concrete Weight = 150 pcf

Attachment "C"

Construction of New John F. Kennedy High School
Finance, Demolition, Design, Build, Maintain, Leaseback (FDDDBML)
Project No. 700-5-1020-L-TAM

- | | | | | |
|----|---------------------------|----------------------|----------------|-----------|
| 1. | Double Tee Panel: | Guam RMP Double Tees | | |
| | a. | 18" deep | Standard Unit | = 44 psf |
| | | | Composite Unit | = 82 psf |
| | b. | 44" deep | Standard Unit | = 74 psf |
| | | | Composite Unit | = 112 psf |
| 2. | Pre-stressed Plank | Base Unit 3.5" thick | = | 43.8 psf |
| | | Composite Unit | = | 81.0 psf |
| 3. | 8 inch CMU Walls | | = | 65 psf |
| 4. | Waterproofing | | = | 8.0 psf |
| 5. | Ceiling | | = | 5.0 psf |
| 6. | Miscellaneous (Utilities) | | = | 3.0 psf |
- b. Live Load
- | | | | |
|----|---------------------|---|----------|
| 1. | Classrooms | = | 40.0 psf |
| 2. | Roof Deck Live Load | = | 12.0 psf |

c. Seismic Load

1. Design Base Shear

$$V = ((C_v \times I) / R \times T) \times W$$

C_v = Seismic coefficient

I = Importance factor

R = Numerical coefficient representative of the inherent over strength and global ductility capacity of the lateral resisting system

T = Elastic fundamental period of vibration under consideration

W = Total seismic load

d. Wind Load

1. Velocity - 175 mph as defined by UBC
Exposure C

2. Foundation

All footings shall rest on the natural compacted soil. Where soft soils are encountered, these will need to be removed and replaced with compacted coral fill.

Attachment "C"

Construction of New John F. Kennedy High School
Finance, Demolition, Design, Build, Maintain, Leaseback (FDBML)
Project No. 700-5-1020-L-TAM

3. Type of Construction in General.

The structural system can be in concrete masonry unit or cast-in-place concrete. Contractor to submit design structural system including structural calculations.

4. Wall System

The vertical load resisting system must composed of concrete bearing walls acting as shear walls. This is the primary lateral resisting element of the structure. the bearing wall system also provides support of the gravity loads from the roof. Cast-in-place concrete or concrete masonry walls are provided in two orthogonal directions to resist any translation and torsional action imposed on the building.

Longitudinal cast-in-place wall along the perimeter provide the lateral resisting element and the primary roof support. Transverse concrete walls at several locations will provide shear capability.

Special detailing must provided for walls with openings.

For non-structural walls, use of reinforced concrete masonry construction may be provided.

5. Roof System.

Conventional cast-in-place system.

D. Mechanical System

Mechanical system include air conditioning, ventilation, interior plumbing system and fire sprinkler system.

1. Air Conditioning Systems.

Generally, systems will follow accepted industry practices as reflected in the latest issues of the American Society of Heating, Refrigerating, and Air-Conditioning Engineers (ASHRAE) handbooks.

Systems will be air-cooled to eliminate the need for make-up water and water treatment systems.

Attachment "C"

Construction of New John F. Kennedy High School
Finance, Demolition, Design, Build, Maintain, Leaseback (FDDDBML)
Project No. 700-5-1020-L-TAM

Ducted split systems with the fan-coil units in small closets will be used at the Classrooms. The Cafeteria must utilize a package system located outside the building, distribution duct work will be located above the ceilings except in areas such as the Cafeteria which will expose the structure and services.

All exterior condenser units will be enclosed with fencing and housing

2. Mechanical Ventilation.

Mechanical Ventilation will be provided for all toilets, and other non-air conditioned enclosed spaces.

3. Interior Plumbing systems.

Conventional soil, waste and vent piping system will be used, using DWV plastic piping.

Water piping can be copper or chlorinated polyvinyl chloride.

Drinking fountains must be provided

Sinks must be provided in each classroom (as needed)

ADA requirements must be provided at each toilet room

4. Fire Sprinkler System and Alarm system.

All Existing fire alarm system must be connected to new alarm system verify existing condition for compatibility

E. ELECTRICAL SYSTEM.

Contractor to verify the existing distribution power lines and possible power connection points for the new school. The contractor will be responsible for the cost of the underground line extensions to service the school. Contractor is responsible for all upgrading to comply with GPA requirements:

1. Electrical Distribution

Power service to the facility will be from an existing or new pad mounted transformer.

Underground power service from the existing/new pad mounted transformer to automatic transfer switch the main switchboard to the emergency generator and also to the meter.

Underground distribution to main distribution panel board. Existing buildings must be connected to the new electrical system.

Distribution and branch circuit voltage will be:

- Distribution- 208/120 volts, 3 phase, 4 wire
- Power to major equipment - 208 volts, 3 phase
- Fluorescent and HID lighting- 120 volts
- Small Equipment and appliances - 208/120 volts
- Fluorescent task lighting at counters - 120 volts
- General purpose outlets - 120 volts

2. Lighting

Exterior lighting must be post mounted energy efficient metal halide fixtures for parking and driveways. Pole/fixture assembly must be specified to withstand 175 mph winds with 1.1 gust factor. Wall mounted HID fixtures must be used around the building perimeter for security lighting. Ceiling mounted HID fixtures must be used for covered walkways. Exterior light control must have two levels of automatic switching, The "Night Light" (Security Light) which is "ON" from dusk to dawn and the "Curfew Light" which is "ON" from dusk to a pre-set time before dawn.

Interior lighting fixtures must be energy efficient fluorescent and metal halide.

- General lighting applications must use luminaries with T8 fluorescent lamps and electronic ballast.
- For areas with high ceiling such as the Multi-use/Cafeteria and covered areas, metal halide fixtures will be used.
- Exit lights to be provided at egress doors and corridors must be light emitting diode type with built-in emergency battery.
- Task lighting at counters must be provided using slim type fluorescent fixtures with switch control and will be mounted

Attachment "C"

Construction of New John F. Kennedy High School
Finance, Demolition, Design, Build, Maintain, Leaseback (FDDDBML)
Project No. 700-5-1020-L-TAM

under the overhead cabinets.

- General illumination in classrooms, large offices and open areas will have at least three levels of switching to save energy when natural lighting is available.
- Interior walkways must have automatic curfew lighting and security lighting controls.
- Emergency lighting will be provided where required.

3. General Power

A minimum of four general use outlets will be provided in each classrooms. Outlets will be provided at ten (10) feet o.c. at offices. Outlets located outdoors and in wet locations will be weatherproof type with ground fault protection. Outlets in corridors will be heavy duty type.

Power outlets for computers will be isolated type with outlets in each general classrooms, and the library, one outlet per computer station in computer lab and in office areas.

4. Communication Systems

- Telecommunications provisions underground conduit will be provided from the GTA service pedestal to the telephone terminal board. Underground system will be provided from the terminal board to the telephone cabinets to individual outlets. Instruments, cables, and wires will be by GTA under separate contract with the government. Telephone outlets will be provided in offices, lobby, conference rooms, classrooms, and work areas.
- Public address/intercom system, clock and program bell provisions and intercom station will be provided in each classroom and office. Interior and exterior speaker system. master clock (equipment must be located in the administration area. Digital slave clocks in each classroom, office, library, cafeteria, and work areas. Local area network (LAN) system provisions empty raceway system will be provided for LAN cables. Minimum of one LAN outlet must be provided for in

Attachment "C"

Construction of New John F. Kennedy High School
Finance, Demolition, Design, Build, Maintain, Leaseback (FDDBML)
Project No. 700-5-1020-L-TAM

each classroom, offices, cafeteria, library, and nurse station.

- Television system provisions conduit with pullwire for television service from pedestal to main TV cabinet. Cable television distribution from Main distribution frame (MDF) via underground conduit system to the library. Cable television outlets must be provided in each classroom.

5. Fire Alarm System

The fire alarm system must be automatic/manual system with audio/visual alarms throughout the facility. The fire alarm system will be an addressable analog type. Visual alarm will be provided in each public toilet. smoke detectors will be provided where required. Heat detectors will be provided in mechanical rooms. Duct smoke detectors must be provided where required.

6. Emergency Back-Up Power

Provide emergency back-up generator, automatic transfer switch with concrete housing, spill containment.

Emergency Generator must have the same load capacity as the main distribution panel, with 3-days minimum capacity of diesel fuel.

7. All Lighting System

All lighting, electrical & mechanical equipment must be all energy efficient and must meet Guam Energy Code.

Attachment "C"

Construction of New John F. Kennedy High School
Finance, Demolition, Design, Build, Maintain, Leaseback (FDDDBML)
Project No. 700-5-1020-L-TAM