

2. Guam Department of Education Supplemental Filings

Dated this 8th day of September, 2016.

OFFICE OF THE ATTORNEY GENERAL
Elizabeth Barrett-Anderson, Attorney General

By:



SHANNON TAITANO
Assistant Attorney General

DEPARTMENT/OFFICE	COLLATERAL EQUIPMENT REQUESTS	QTY	NOTES
ESL COORD OFFICE	Teacher Desk	2	
ESL COORD OFFICE	Teacher Chair	2	
ESL COORD OFFICE	Student Desks	6	
ESL COORD OFFICE	File Cabinet 2 Drawer	1	
ESL COORD OFFICE	File Cabinet 4 drawer	1	
ESL COORD OFFICE	Storage Cabinet, metal 36x18x72	1	
ESL COORD OFFICE	Bulletin Board	1	
ESL COORD OFFICE	White board 4 x 6	1	
ESL COORD OFFICE	Waste basket	1	
ESL COORD OFFICE	Computer System	1	
ESL COORD OFFICE	Printer/Scanner	1	
ESL COORD OFFICE	Student chair 18"	1	
ESL COORD OFFICE	Fire Extinguisher	1	
ESL COORD OFFICE	Copier machine	1	
ESL LA, MATH, SS	Teacher Desks	3	
ESL LA, MATH, SS	Teacher Chair	3	
ESL LA, MATH, SS	Student Combo desk/chair	54	
ESL LA, MATH, SS	White board 4 x 6	6	
ESL LA, MATH, SS	Smart board	3	
ESL LA, MATH, SS	ELMO	3	
ESL LA, MATH, SS	Multimedia Projector	3	
ESL LA, MATH, SS	File Cabinet 4 drawer	4	
ESL LA, MATH, SS	Storage Cabinet, metal 36x18x72	3	
ESL LA, MATH, SS	Bulletin Board 60 x 36	6	
ESL LA, MATH, SS	Book Shelves 4 tier	6	
ESL LA, MATH, SS	Computer System (Teacher Use)	3	
ESL LA, MATH, SS	Computer System (Student Use)	6	
ESL LA, MATH, SS	Printer/Scanner	3	
ESL LA, MATH, SS	Computer Desk for 2 computers	3	
ESL LA, MATH, SS	Student chair 18"	6	
ESL LA, MATH, SS	Waste basket	3	
ESL LA, MATH, SS	World Map and Globe combo	1	
ESL LA, MATH, SS	MP3-CD Listening Center	1	
ESL LA, MATH, SS	Fire Extinguisher	3	
ESL LA, MATH, SS	Pull down screen projector**	3	
ESL LA, MATH, SS	32" Flat screen TV with cable	3	
ESL LA, MATH, SS	DVD/VCR player	1	
ESL LA, MATH, SS	Pencil Sharpener	3	
ESL SCIENCE	Teacher's Desk	1	
ESL SCIENCE	Teacher's Chair	1	
ESL SCIENCE	Student Combo desk/chair	18	
ESL SCIENCE	White board	3	

ESL SCIENCE	Smart Board	1	
ESL SCIENCE	Elmo	1	
ESL SCIENCE	Multimedia Projector	1	
ESL SCIENCE	File cabinet 4 drawer	2	
ESL SCIENCE	Storage Cabinet, metal 36x18x72	2	
ESL SCIENCE	Bulletin Board 60 x 36	2	
ESL SCIENCE	Book Shelves 4 tier	2	
ESL SCIENCE	Computer System (Teacher Use)	1	
ESL SCIENCE	Computer System (Student Use)	16	
ESL SCIENCE	Printer/Scanner	1	
ESL SCIENCE	Computer tables (Student Use)	8	
ESL SCIENCE	Laboratory Tables	6	
ESL SCIENCE	Laboratory Stools	18	
ESL SCIENCE	Fire Extinguisher	1	
ESL SCIENCE	Beakers (Various sizes)	2 dz	
ESL SCIENCE	Erlenmayer Flask (Various sizes)	2 dz	
ESL SCIENCE	Test Tubes (Various sizes)	2 dz	
ESL SCIENCE	Graduated Cylinders (Various Sizes)	2 dz	
ESL SCIENCE	Meter Sticks	16	
ESL SCIENCE	Laboratory Microscope	8	
ESL SCIENCE	Handheld Microscope	8	
ESL SCIENCE	Microscope slide	6 bx	
ESL SCIENCE	Microscope cover slip	6 bx	
ESL SCIENCE	Prepared Slides (Assorted: Plant and Animal Cells, mitosis, meiosis)	Class set	
ESL SCIENCE	Triple Beam Balance	4	
ESL SCIENCE	Stop watches	16	
ESL SCIENCE	Pull Scale/Spring Balance	16	
ESL SCIENCE	Tape measurres	16	
ESL SCIENCE	Steel Trolley	1	
ESL SCIENCE	Peirri dish	3 cs	
ESL SCIENCE	Human Skeleton Model	1	
ESL SCIENCE	Plant Cell Model	1	
ESL SCIENCE	Anima Cell Model	1	
ESL SCIENCE	Magnifying lens	16	
ESL SCIENCE	Thermometer	16	
ESL SCIENCE	Dissecting Set/Kit	16	
ESL SCIENCE	Dissecting Pans	16	
ESL SCIENCE	Pull down screen projector **	1	
ESL SCIENCE	32" Flat screen TV with cable	1	
ESL SCIENCE	Pencil Sharpener	1	
ADMIN MAIN OFFICE	EXECUTIVE DESKS	5	
ADMIN MAIN OFFICE	4 DRAWER FILING CABINETS	15	

ADMIN MAIN OFFICE	WHITE BOARD 4' x 8'	10	
ADMIN MAIN OFFICE	PA SYSTEM w/ VIDEO CAPABILITY	1	
ADMIN MAIN OFFICE	STORAGE CABINETS (OR BUILT-IN CLOSETS)	5	
ADMIN MAIN OFFICE	BULLETIN BOARDS 4' X 8'	3	
ADMIN MAIN OFFICE	DIGITAL SIGN / LED SIGNAGE 4' X 8'	1	
ADMIN MAIN OFFICE	CONFERENCE TABLE FOR 25PAX	1	
ADMIN MAIN OFFICE	CONFERENCE TABLE CHAIRS	25	
ADMIN MAIN OFFICE	TIME CLOCK	1	
ADMIN MAIN OFFICE	FOLDING CHAIRS w/ RACK	1000	
ADMIN MAIN OFFICE	STACKABLE CHAIRS CHAIRS	1000	
ADMIN MAIN OFFICE	BENCHES - FOR WAITING ROOMS	25	DISCIPLINE, ATTENDANCE, NURSE, MAIN OFFICE, COUNSELING
ADMIN MAIN OFFICE	DIGITAL SIGN ALONG THE MAIN HALLWAY	1	TO POST ANNOUNCEMENTS BEFORE ENTERING THE MAIN BLDG
ADMIN MAIN OFFICE	GREETING COUNTER	2	One for Main Office, One for Counseling
ADMIN MAIN OFFICE	VAULT or SAFE	1	
CAFETERIA	DIGITAL SIGN w/ AUDIO/PA SYSTEM	1	
CAFETERIA	FOLDING TABLE/BENCH COMBO SEATS 15-20	20	
CAFETERIA	ALUMINUM/PLASTIC TRASH RECEPTACLES	15	TO BE USED CAMPUS WIDE
PROSTART KITCHEN	Heater/Proofer Cabinet Mobile Model 27"Wx34-3/4Dx66"H	1	
PROSTART KITCHEN	DISHWASHER, single water inlet, temperature 120degrees F to 140 degreeF. Wash and final rinse/pass through upright dish/pot washer. Pump capacity, 45GP, 1/2HP, single-phase type	1	
PROSTART KITCHEN	STAINLESS STEEL HAND SINK with food pedal valve and spout.	2	
PROSTART KITCHEN	STAINLESS STEEL WALL SHELF and POT RACK, 12"W. Mounting channels extra long to receive a 2"x3 / 16" steel bank for sliding POT HOOKS. Four foot unit has two brackets	2	
PROSTART KITCHEN	STAINLESS STEEL VENTILATOR; CENTRIFUGAL GREASE EXTRACTION; self-cleaning, automatic fire protection. INSTALLED ABOVE	1	
PROSTART KITCHEN	COOKING EQUIPMENT		
PROSTART KITCHEN	DOUBLE COMPARTMENT, 24"x22" bowl, SINK with 24" right T drainboard and 60" on the left, with no lapping edges or seams.	1	
PROSTART KITCHEN	Two faucet holes on 12" centers over each partition. Drain holes/ crumb cup strainer with rubber stopper (Produce Sink)		
PROSTART KITCHEN	TRIPLE COMPARTMENT SINK, two sections to be 24"x24" and one compartment 24"x30" with right drainboard to be 24"x36"	1	
PROSTART KITCHEN	120" extension on left. One-piece, integral construction with no lapping edges or seams. Two faucet holes on 8" centers over each partition. STAINLESS STEEL.		
PROSTART KITCHEN	GAS RESTAURANT RANGE with 6 BURNERS, 26"x26" - 1/2" ovens and 1-24" griddle with high raised sides and ceramic radiant broiler.Complete with easy to clean porcelain lining,		
PROSTART KITCHEN	CHAR BROILER - 36"x15"x26", gas fired with stand, South Bend Model or Vulcan	1	
PROSTART KITCHEN	BAKERS TABLE, 72" Lx30"W, top of 2" thick edge grained		

	laminated maple reinforced with 1/2" rods and concealed nuts with a 5" high maple riser on back. Stainless steel wall shelf and pot rack, 12"W mounting channel extra long to receive a 2"x3/16" steel ban for sliding pot hooks. Four foot unit has 2 brackets.		
PROSTART KITCHEN	COOK'S TABLE with drawers and POT RACKS	2	
PROSTART KITCHEN	WASH DOWN HOSE STATION with hot and cold water mixing valves and stainless steel hose rack.	2	
PROSTART KITCHEN	HOT WATER HEATER, instant recovery	1	
PROSTART KITCHEN	DRINKING FOUNTAIN		
PROSTART KITCHEN	UNIVERSAL POWER DISTRIBUTION SYSTEM FOR GAS/ELECTRIC UNDER HOOD	1	
PROSTART KITCHEN	ADJUSTABLE METAL SHELVINGS FOR LAUNDRY ROOM, EQUIPMENT ROOM, DRY STORAGE ROOM, RESTROOM		
PROSTART CLASSROOM	TEACHER DEMONSTRATION CENTER with LOCKABLE MULTIMEDIA CABINET		
ENGLISH	60-3/4"Wx29-3/4"Dx59"H	25	
ENGLISH	IPADS/NETBOOKS/OR KINDLES		
ENGLISH	MULTIMEDIA CARTS FOR PROJECTORS/LAPTOPS	25	
ENGLISH	WHITEBOARD, 4' X 10'	25	
ENGLISH	BULLETIN BOARDS (2 per ENGLISH Class)	50	
ENGLISH	TEACHER DESKS	25	
ENGLISH	PODIUMS	25	
ENGLISH	WORLD MAP	25	
ENGLISH	TEACHER CHAIR	25	
ENGLISH	OVERHEAD PROJECTOR	25	
ENGLISH	ACTIVE/VIEW (DOCUMENT CAMERA)	25	
CFS	STOVE, SELF-CLEANING	4	
CFS	REFRIGERATORS	4	
CFS	MICROWAVE	4	
CFS	DOUBLE SINKS	4	
CFS	WALK-IN PANTRY	1	
CFS	WASHING MACHINE	1	
CFS	DRYER	1	
CFS	UPRIGHT FREEZER	1	
CFS	DEMONSTRATION TABLE FOR INSTRUCTOR	1	
CFS	COOKING LAP TABLES	5	
ROTC CLASSES	BOOK SHELVES	16	
ROTC CLASSES	BULLETIN BOARDS (60" X 30")	8	
ROTC CLASSES	STORAGE CABINETS (30"X15"X66")	6	
ROTC CLASSES	STUDENT COMBO DESK/CHAIR	60	
ROTC CLASSES	TEACHER DESKS	2	
ROTC CLASSES	TEACHER CHAIRS	2	
ROTC CLASSES	AMERICAN FLAG SET	4	

ROTC CLASSES	GUAM FLAG SET		4	
ROTC CLASSES	GLASS DISPLAY SHELVES		8	
ROTC CLASSES	PA SYSTEM (MIXER-AMP, SPEAKERS, STANDS, CABLES, MIC)		1	
ROTC CLASSES	COMPUTER SYSTEM TABLES		2	
ROTC CLASSES	WHITEBOARD; 4' X 6'		6	
ROTC OFFICES	4 DRAWER FILE CABINET		6	
ROTC OFFICES	2 DRAWER FILE CABINET		6	
ROTC OFFICES	METAL 4-TIER SHELVES		6	
ROTC OFFICES	STORAGE CABINETS (30"X15"X66")		6	
ROTC OFFICES	WHITEBOARD 4'X6'		4	
ROTC OFFICES	TEACHER DESKS		3	
ROTC OFFICES	TEACHER CHAIR		3	
ADMIN MAIN OFFICE	STUDENT LOCKERS		2200	
PE DEPT	Teacher chairs with arm rest		6	
PE DEPT	Whiteboard 4' x 6'		6	
PE DEPT	2 drawer file cabinet		6	
PE DEPT	4 drawer file cabinet		6	
PE DEPT	full size Athletic lockers 36" x 72"		400	
PE DEPT	15 Medicine balls Rack set		1set	
PE DEPT	10 Medicine balls (4,6,8,10,15,20,25,30,40,50 lbs)		1 set	
PE DEPT	45 lbs olympic weightlifting straight bars		12	
PE DEPT	45lbs olympic weightlifting straight bar wall racks		2	
PE DEPT	22 lbs olympic tricep bar		4	
PE DEPT	48" curl bar olympic		4	
PE DEPT	Olympic bar LOCDOWN collars		20 pr	
PE DEPT	Olympic weight rubber bumper plates 45 lbs		10	
PE DEPT	Olympic weight rubber bumper plates 35 lbs		10	
PE DEPT	Olympic weight rubber bumper plates 25 lbs		10	
PE DEPT	Olympic weight rubber bumper plates 15 lbs		10	
PE DEPT	Olympic weight rubber bumper plates 10 lbs		10	
PE DEPT	Olympic weight rubber bumper plates 5 lbs		10	
PE DEPT	Olympic weight rubber bumper plates 2.5 lbs		10	
PE DEPT	Bumper Plate trees		6	
PE DEPT	Adjustable squat box		8	
PE DEPT	Rubber-coated Hex dumbbells 10 lbs		6	
PE DEPT	rubber-coated hex dumbbells 15 lbs		6	
PE DEPT	rubber-coated hex dumbbells 20 lbs		6	
PE DEPT	rubber-coated hex dumbbells 25 lbs		6	
PE DEPT	rubber-coated hex dumbbells 30lbs		6	
PE DEPT	rubber-coated hex dumbbells 35 lbs		6	
PE DEPT	rubber-coated hex dumbbells 40 lbs		6	
PE DEPT	rubber-coated hex dumbbells 45 lbs		4	

PE DEPT	rubber-coated hex dumbbells 50 lbs	4	
PE DEPT	rubber-coated hex dumbbells 55 lbs	4	
PE DEPT	rubber-coated hex dumbbells 60 lbs	4	
PE DEPT	rubber-coated hex dumbbells 65 lbs	4	
PE DEPT	rubber-coated hex dumbbells 70 lbs	4	
PE DEPT	rubber-coated hex dumbbells 75 lbs	4	
PE DEPT	rubber-coated hex dumbbells 80 lbs	4	
PE DEPT	3 shelf dumbbell rack that holds 15 pairs, 2100 lb capacity	4	
PE DEPT	rubber coated kettlebells 20lbs	2	
PE DEPT	rubber coated kettlebells 25lbs	2	
PE DEPT	rubber coated kettlebells 10lbs	2	
PE DEPT	rubber coated kettlebells 40lbs	2	
PE DEPT	rubber coated kettlebells 30 lbs	2	
PE DEPT	rubber coated kettlebells 60lbs	2	
PE DEPT	rubber coated kettlebells 50 lbs	2	
PE DEPT	Power squat rack cage with storage	6	
PE DEPT	Olympic flat benches	6	
PE DEPT	Adjustable olympic benches with wheels	4	
PE DEPT	Cable crossover machine	2	
PE DEPT	35 degree leg press	2	
PE DEPT	Adjustable weights Lat pull down machine	1	
PE DEPT	adjustable weights leg extension machine	1	
PE DEPT	Adjustable weights hamstring curl machine	1	
PE DEPT	adjustable weights squat machine	1	
PE DEPT	adjustable weights bicep machine	1	
PE DEPT	Adjustable weights bench press machine	1	
PE DEPT	Adjustable weight assistance pulldip machine	1	
PE DEPT	adjustable weights cable row machine	1	
PE DEPT	3/8 thick rubber floor 25'length x 4'width 100 square feet coverage (RED)	15	
PE DEPT	3/8 thick floor tiles black	20	
PE DEPT	Angled pull-up bar wall mount 12" from wall 50" width	2	
PE DEPT	plyometric rubber surface platforms set 12, 18 14, 30 inches Height	2 sets	
PE DEPT	soft cable speed jump ropes	40	
PE DEPT	single 17" wide x 29'6"length Agility ladder	8	
PE DEPT	12" diameter disc cone (half cone)	100	
PE DEPT	Vinyl cones 12 inch height	30	
PE DEPT	4' x 6' foldable tumbling mats	10	
PE DEPT	Push-up tester machine	6	
PE DEPT	Rope anchor station with ropes	1	
PE DEPT	6' x 6' mirrors for weightroom	6	
PE DEPT	High school wilson official size football	30	
PE DEPT	high school intermediate JR size Footballs	10	
PE DEPT	Flag football belt flats	4 sets	

PE DEPT	Nike elite official size 7 basketball composite cover	40	
PE DEPT	Basketball rim nets	60	
PE DEPT	Break away basketball rims	7	
PE DEPT	Unbreakable class backboards 72"W x 42" H	6	
PE DEPT	Size 5 nke soccerballs	40	
PE DEPT	Bolt on back board padding 72"	8	
PE DEPT	aluminum soccer goals with nets 24' width and 8' heights	4	
PE DEPT	aluminum futsal soccer goals 9'10" width x 6'7" height x 3'4" deep	4	
PE DEPT	official volleyballballs sv-5ws composite cover	40	
PE DEPT	Tachikara Ball cart 25"L x 25"W x 40"H	2	
PE DEPT	Volleyball pole court system Aluminum pole adjustable height	3 sets	
PE DEPT	Volleyball high school cable nets 32' x 39"	6	
PE DEPT	Easton 32" softball bats	2	
PE DEPT	Easton 33" softball bats	2	
PE DEPT	easton 30" softball bats	1	
PE DEPT	wilson Right throw glove size 12"	30	
PE DEPT	Wilson left throw glove size 12"	8	
PE DEPT	Original shoot a way basketball shooting machine	1	
PE DEPT	Debeer Clincher Gymball softballs extra soft fiber-core balls 14"	20	
PE DEPT	Debeer Clincher Gymball softballs extra soft fiber-core balls 16"	12	
PE DEPT	Jugs Jr combo pitching machine	1	
PE DEPT	Jugs sting-free pitching machine balls yellow	24	
PE DEPT	Solid rubber adjustable batting tees	4	
PE DEPT	throw down rubber bases	2 sets	
PE DEPT	Pro-style bases anchor system	2 sets	
PE DEPT	Double safety first base anchor system	2	
PE DEPT	Gopher G3000 Badminton racquets	36	
PE DEPT	Carlton F1Ti Shuttle cocks 6 in a tube	15 tubes	
PE DEPT	ultranet Max portable net system 20'W x 61'H badminton/pickleball	8 nets	
PE DEPT	Diller pickle-ball paddles	36	
PE DEPT	Indoor pickle-ball plastic balls	5 doz	
PE DEPT	wilson 27.5L tennis racquets	36	
PE DEPT	Penn tennis balls 3 per can	10 cans	
PE DEPT	Rallynet Club net Tennis net 42'W x 39'H	6 nets	
PE DEPT	11" diameter frisbee heavyweight	10	
PE DEPT	10" diameter frisbee	10	
PE DEPT	Gopher super soft coated-foam balls 6 in a set	5 set	
PE DEPT	Wrestling Mat 40ft by 40 ft	1	
PE DEPT	Competition High School High Jump pit (Grey) 18" WX 10'D X26" H	1	
PE DEPT	MVP 4"LED Table top Scoreboards LED w/stand wireless	2	
PE DEPT	Basketball/Volleyball/Wrestling 15" LED Scoreboard wireless	2	
PE DEPT	fox 40 peales whistles	20	
PE DEPT	butterfly premium rollaway table tennis table	8	

DEPARTMENT OF THE ARMY
8TH BRIGADE ARMY JROTC
SIMON A. SANCHEZ HIGH SCHOOL
395 Juan Jacinto Road
Yigo, Guam 96929

ATOD-ITS

20 February 2015

MEMORANDUM FOR RECORD

SUBJECT: JROTC Classroom Equipment Request

1. The following items are requested to support the JROTC Program:

Classrooms (2)

Item	Quantity
Book Shelves 4 Tier	8 ea
Bulletin Board 60" x 30"	4 ea
Storage Cabinet 30" x 15" x 66"	3 ea
Student Combo Desk & Chair Chrome Frame	30 ea
Teacher Desk and Chair	1 ea
American Flag Set	2 ea
Guam Flag Set	2 ea
Color Guard Flag Harness	5 ea
Glass Display Shelves	4 ea
PA System (Mixer-Amp; Speakers, Stands, Cables, Microphone)	1 ea
Computer System Table	1 ea
Whiteboard 4 x 6	3 ea

JROTC Office (1)

4 Drawer File Cabinet	6 ea
2 Drawer File Cabinet	6 ea
Metal 4 tier shelves	6 ea
Storage Cabinet 30 x 15 x 66	6 ea
Whiteboards 4 x 6	4 ea
Teacher Desk and Chair	3 ea

2. POC for this headquarters, is CPT Susuico, 653-3781 or (c) 687-1730.

Ignas T. Susuico
Captain, US Army (Retired)
Senior Army Instructor

To: Carla Masnayan, SSHS Principal
From: Rey F. Ventus, SSHS Librarian
Date: Monday - February 23, 2015
Subject: Proposed SSHS Library Building Specifications & Collateral Equipment

Per your e-mailed request dated February 20, 2015, the following information lists my solicited proposal for 1) building specifications for the new Simon A. Sanchez High School Library and 2) collateral equipment for the new SSHS library. Please note that I was not present during the SSHS department chair meeting on February 19, and therefore, was not able to view the proposed layout for the new SSHS building.

1. SSHS Library New Building Specifications (based on the 2003 Massachusetts School Library Media Program Standards for 21st Century Learning)

- A. Instructional Materials Center (program area) – up to 15% of student enrollment x 40 square feet.
- B. Computer lab space (calculated per workstation) – 30 square feet per workstation.
- C. Seating Capacity – 12% of the total student body
- D. Accessibility – Must conform to the *Americans with Disabilities Act*.
- E. Location – The library facility should be located in a secure and central location and away from noisy areas (band room, gym, student commons passing areas). The facility should also be near an outside entrance to be accessible for order deliveries during non-school hours without the requirement of the school to be open.
- F. Environment-
 - i.) Cooling ventilation equipment should run quiet and draft-free, and operate in an environmentally safe and reliable manner. Sustainable control of humidity is mandatory to preserve and protect the collection from the outside tropical climate.
 - ii.) Lighting should be adequate and glare-free for book reading and minimal eye-strain for computer monitors. Dimming controls via switches / window blinds will be required for areas equipped with audiovisual projection equipment.
 - iii.) Grounded electrical outlets must be safe for student use, well-placed around the library learning space, adequately numbered for charging digital devices / laptop computers. Capacity of electrical circuitry must be robustly capable of handling current and projected needs.

iv.) Carpeting and wall / ceiling treatments are recommended for critical areas that require sound absorption. Computer workstation areas should incorporate materials which can reduce static buildup.

v.) The overall design of the library facility should demonstrate a minimal degree of sustainability regarding its maintenance and upkeep since a properly-maintained facility will encourage respectful use.

2. SSSH Library Collateral Equipment

A. Furnishings – Consideration of flexibility of use, durability, appearance and comfort should be considered when selecting library furnishings for the new library. All items and their surrounding access points must conform to state and federal rules and standards governing access for the disabled (students and staff).

i.) Chairs and Other Seating – Seat distance from the floor should range from 16 – 18 inches.

ii.) Tables and Study Carrels – At least 60 inches should be allowed between two tables/carrels with back-to-back seating. The maximum height of working surfaces should range from 27 – 30 inches.

B. Shelving – All shelving should be well-secured and designed to fit the library space. Shelving should be compatible to the size and dimension requirements of the following (but not limited to) resource formats: reference, hardcover, picture & paperback books, audiobooks on disc, periodicals, DVDs, miscellaneous kits and software. Height of the shelving should be considered in library areas where visual control is needed.

A more current (post-2003) specification listing may be obtained from peer-reviewed articles of various library science journals if needed. Please let me know if anything else is needed. Thank you.

SSHs High School		COLLATERAL EQUIPMENT	
Social Studies Dept.		SOCIAL STUDIES DEPT	
Item #	ITEM	QTY	
1	Teacher Desk	11	
2	Teacher Chair (leather)	11	
3	Student Desks (Combo desk & chair)	330	
4	2 Drawer File Cabinet	36	
5	4 Drawer File Cabinet	36	
6	Storage Cabinet, metal 36x18x72	22	
7	Bulletin Board	11	
8	White board 4 x 6	33	
9	Waste basket	33	
10	Computer System (Student/Teacher Use)	3	
11	Printer/Scanner	11	
12	Student chair 18"	44	
13	Computer desk work station for 2 computers	33	
14	Smart Board	11	
15	ELMO	11	
16	Multimedia Projector	11	
17	Bulletin Board	11	
18	Projector Screens	11	
19	Teacher podiums	11	
20	Book Shelves (4 tier)	33	
21	A/V Cart	11	
22	Surround Sound Speakers	11	
23	Ceiling Mount for Projectors	11	
24	Flat Screen TV's (6- in.)	11	
25	World Map (6' X 9')	12	
26	United Nations Country Flags	11 sets	
27	Wall Mount Guam Flag (3' X 5')	11	

BUILDING SPECS FOR SS DEPT	
SOCIAL STUDIES DEPT	
Social Studies	
1	Located near each other
2	Social Studies Lounge (12 X12)
3	Outlets on every wall
4	Internet access (LAN/Wireless)
5	Cordless Phones and lines
6	A/C Control for each room
7	Intercom System
8	A/V Room to accommodate 60 pax
9	Ceiling Fans in each room
10	Bookrooms (2)
11	Emergency Lights
12	Fire Extinguisher
13	
14	
15	
16	
17	
18	
19	
20	
21	
22	
23	
24	
25	

BAND / CHOIR INPUT

AUDITORIUM

Performance Area separate from Gym. Theater “smaller than Southern High” but still appropriate for 800-1000 audience, Not smaller than 700. 60 Foot wide by 40 foot deep stage with 5 foot deep “Pit” in front large enough to hold 30 musicians and Instruments. Should be located close to Choir, Band and Dance classrooms and have front Curtain, space on the sides of the stage, Dressing rooms nearby, Lobby area, Sound and stage lighting included, 3 “spot” lights.

EQUIPMENT

Band and Choir and Dance Classrooms constructed near the Auditorium.

Seated Band Risers for 80 Piece band and full percussion.

80 Music Stands, 80 Wenger Student Music Chairs,

BAND INSTRUMENTS

ADVANCED 80 PIECE CONCERT BAND, (with Cases/\$2,500 to \$10,000 each instrument)

2 each Professional Model: 2 Flute, 1 Oboe, 2 Clarinet, 2 Alto Sax, 1 Bassoon, 2 Tenor Sax, 2 Double French Horns, 2 Trumpet, 2 Trombone, 2 Tuba,

Intermediate Model (with cases/\$1,200 to \$4,500 each) (2) Piccolo, 6 Flute, 2 Oboes, (8) Clarinet, 1 eb Soprano, 1 Eb Alto, 2 Bb Bass Clarinet, 1 Eb Contra Bass Clarinet, 2 Bassoons, 4 Alto Saxophone, 2 Tenor Saxophone, 2 Bari Sax, 4 Trumpets, 4 Double French Horns, 4 trombones, (2) Tenor Trombone with F attachment, 1 Bass Trombone. 3 Euphoniums, 2 Tuba's. 1 English Horn \$1,200 to \$4,500 each. Baby Grand Concert Piano, 2 upright Piano's, 2 Electrical Piano's, 2 PA systems.

Percussion Equipment,

Concert Bass Drum,

3 Snare Drums,

Wood Shell with Concert Stands.

Set of 5 Copper Timpani.

Smaller percussion instruments such as temple blocks, woodblocks (several sizes), triangle, Bell tree, concert Zildjan Gong and Stand, Cabasa, Vibra Slap, Concert Rain Stick,

Marching Percussion,

Quad Toms,

3 marching Snare Drums,

3 Tenor Drums.

Set of Marching Bass Drums.

3 – 7 piece Drum Sets with all appropriate hardware, ie cymbals, cymbol stands, throne.

Mallet Percussion, Xylophone, Marimba, Vibraphone, Chimes, Orchestra Bells,

Jazz Band additional instruments;

1 Electronic Keyboards with Keyboard Amp,

3 Electric Guitars with Amps,

2 Electric Bass Kits with Bass Amps,

BAND / CHOIR INPUT

Beginning Band instruments, Student Model; 2 Classes of Beginners. With Cases

8 Flutes,
12 Clarinets,
6 Alto Saxophones,
6 Tenor Saxophones,
2 Bari Saxophone,
9 Trumpets,
8 trombones,
4 Baritones,
3 ¾ size Tuba's.
3 Wood Shell Snare Drums.
Smaller 2 Xylophone and Orchestra Bells. \$500 to \$2,500 each
Conductors Podium,
Conductors Stand

I know I did not think of everything.

Location of Music rooms should be near auditorium/performance location AND have easy access to football field.

Area where equipment can be loaded for off Campus Performances like Tumon Bay Music Festival, Sanchez day at the Mall etc.

ACOUSTICAL TREATMENT IS CRITICAL!! Square concrete wall "box" is NOT conducive to music education.

Wengercorp.com has available online PDF catalogs for Teaching rooms and performance facilities. We should follow those.

CHOIR INPUT

Hi, Mr. Hardy!

I'm not too familiar with the choral facility, but I've attached the Wenger music facility planning guide. Here are some things that I would definitely want:

- flat floored classroom that could fit about 50 students on risers
- portable standing choral risers
- portable seated choral risers
- piano (a baby grand would be nice!)
- couple of ensemble practice rooms with keyboards or piano in them
- sound proof walls for the classroom and the practice rooms
- music library for sheet music
- a full choral PA system
- music posture chairs
- a computer station
- a decent auditorium!

MARKETING TEACHER INPUT

SSHS MARKETING CLASSROOM AND LABORATORY NEEDS

CLASSROOM:

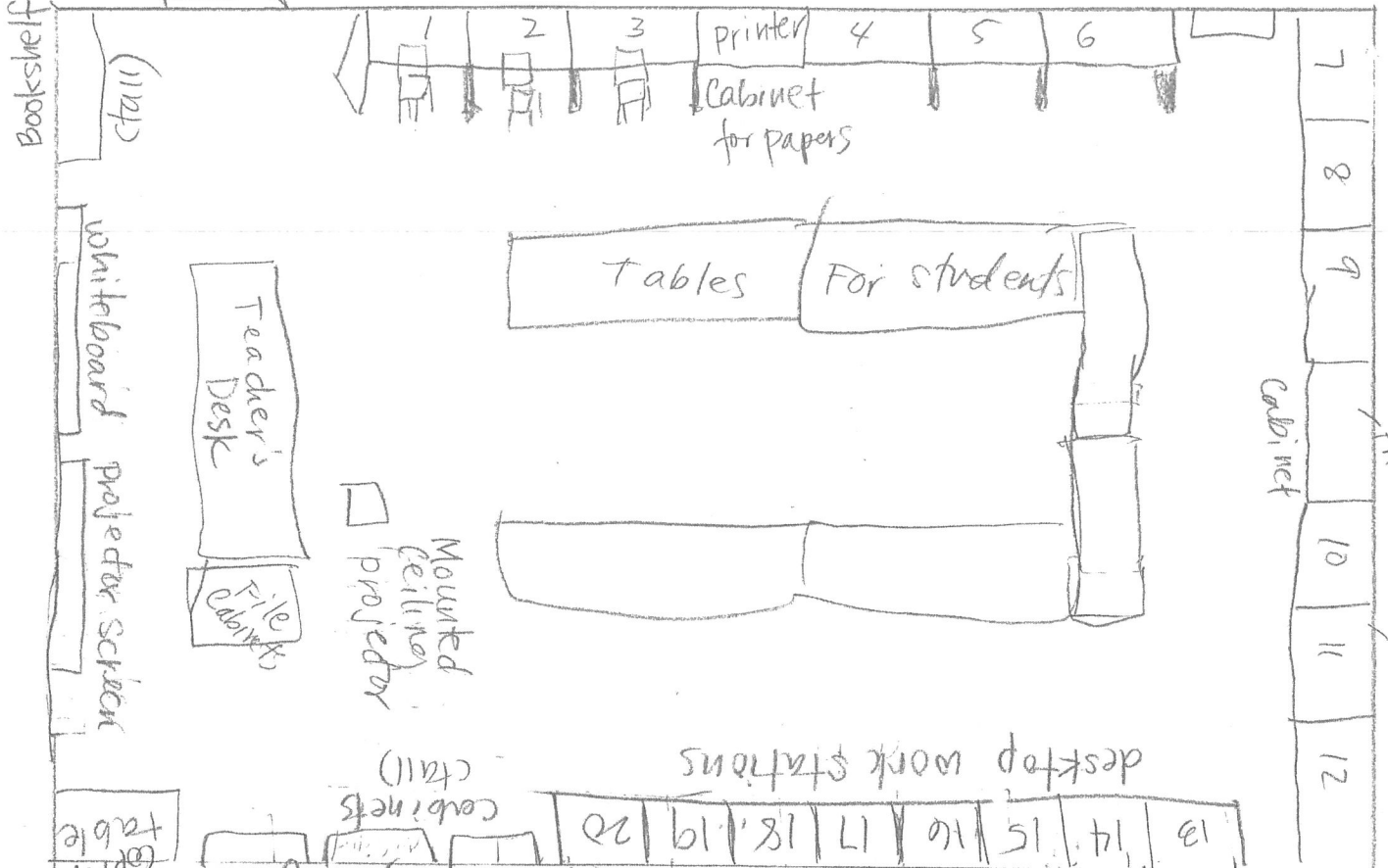
- whiteboard
- projector screen
- mounted ceiling projector
- 20 desktop work stations along the walls of the room
- 2 cabinets for printer
- surveillance equipment

STORE LABORATORY:

- 3 cash register stations
- 4 merchandise display cases
- storage room
- bathroom with hot water (for sanitary permit)
- mop sink
- window display area
- surveillance equipment

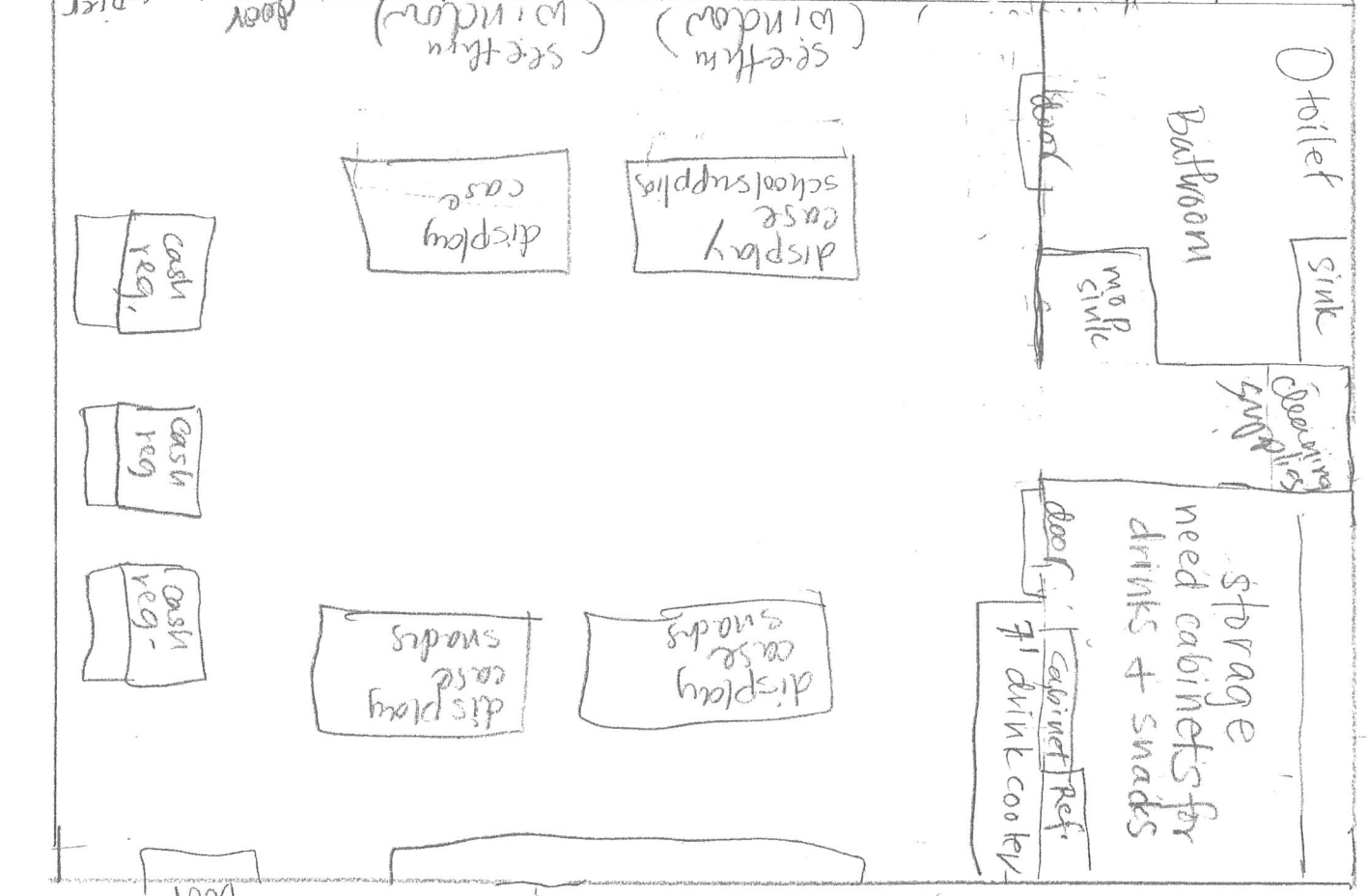
*Please see attached proposed layout.

door
desktop work stations
split A/C



Printer
desktops

MARKETING



Toilet
sink

Bathroom

door
storage
need cabinets for
drinks + snacks

door
cabinet ref.
7l drink cooler

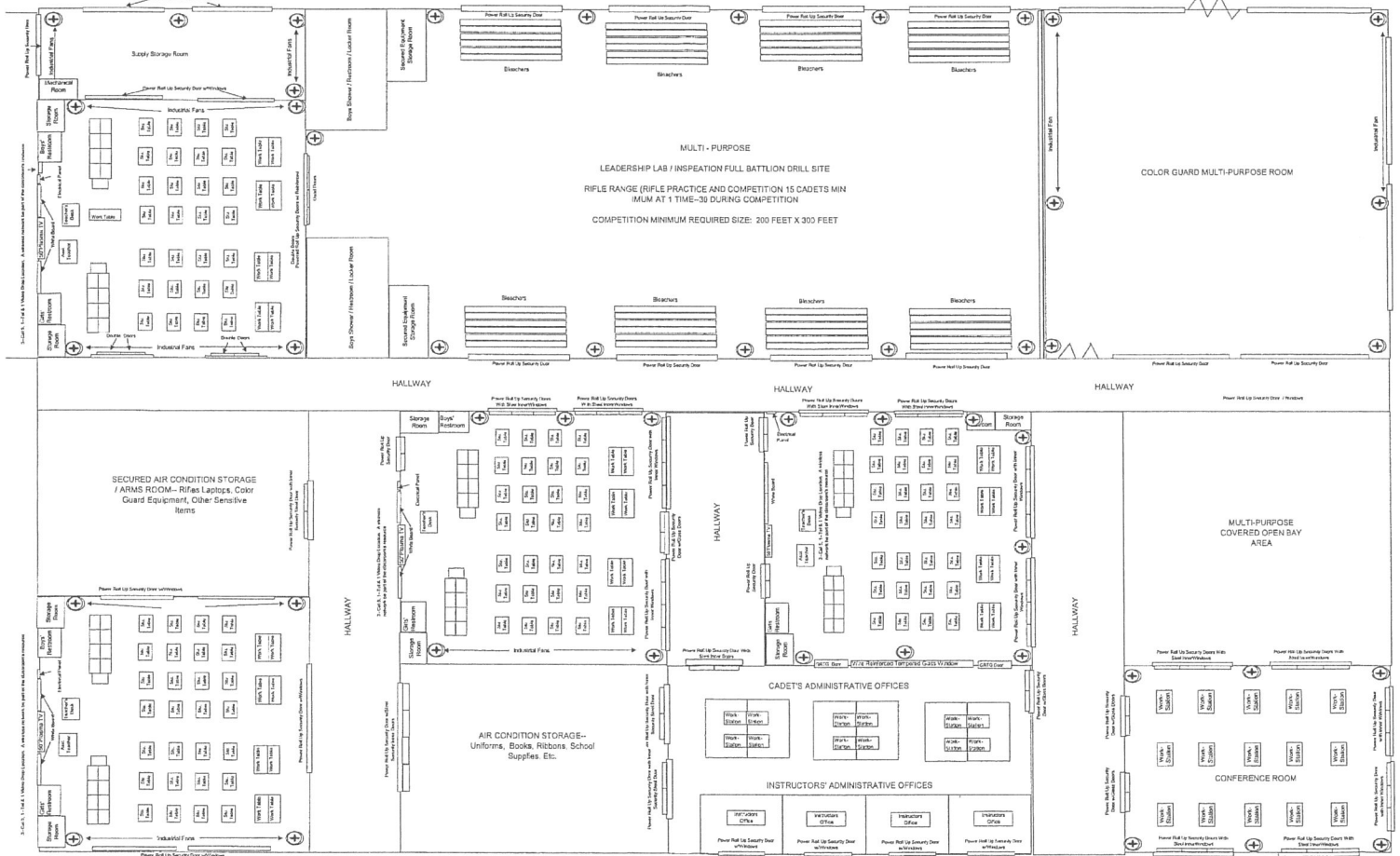
see thru window display area

door

PREPARED BY: DANIEL M. CRISOSTOMO
 GPSS VOCATIONAL EDUCATION SCHOOL PROGRAM CONSULTANT
 DATE: DECEMBER 08, 2007

MIDDLE SCHOOL (GRADES 7 AND 8): SAFETY AND SECURITY ACADEMY (CHARACTER EDUCATION, SEA CADET, ETC.)

HIGH SCHOOL (GRADES 9 TO 12): SAFETY AND SECURITY ACADEMY (Jr. ROTC, ETC.)



SSHHS High School	COLLATERAL EQUIPMENT		
Social Studies Dept.	SOCIAL STUDIES DEPT		
Item #	ITEM	QTY	
1	Teacher Desk	11	
2	Teacher Chair (leather)	11	
3	Student Desks (Combo desk & chair)	330	
4	2 Drawer File Cabinet	36	
5	4 Drawer File Cabinet	36	
6	Storage Cabinet, metal 36x18x72	22	
7	Bulletin Board	11	
8	White board 4 x 6	33	
9	Waste basket	33	
10	Computer System (Student/Teacher Use)	3	
11	Printer/Scanner	11	
12	Student chair 18"	44	
13	Computer desk work station for 2 computers	33	
14	Smart Board	11	
15	ELMO	11	
16	Multimedia Projector	11	
17	Bulletin Board	11	
18	Projector Screens	11	
19	Teacher podiums	11	
20	Book Shelves (4 tier)	33	
21	A/V Cart	11	
22	Surround Sound Speakers	11	
23	Ceiling Mount for Projectors	11	
24	Flat Screen TV's (6- in.)	11	
25	World Map (6' X 9')	12	
26	United Nations Country Flags	11 sets	
27	Wall Mount Guam Flag (3' X 5')	11	

	BUILDING SPECS FOR SS DEPT
	SOCIAL STUDIES DEPT
	Social Studies
1	Located near each other
2	Social Studies Lounge (12 X12)
3	Outlets on every wall
4	Internet access (LAN/Wireless)
5	Cordless Phones and lines
6	A/C Control for each room
7	Intercom System
8	A/V Room to accommodate 60 pax
9	Ceiling Fans in each room
10	Bookrooms (2)
11	Emergency Lights
12	Fire Extinguisher
13	
14	
15	
16	
17	
18	
19	
20	
21	
22	
23	
24	
25	

MATHEMATICS TEACHER INPUT

Mathematics Department Collateral/Equipment Request

Item No.	Item	Quantity
	Student combo desk/chairs	450
	Large marker white boards	30
	Teacher desk	15
	Teacher (captain's) chair	15
	Lockable mobile cart	15
	Smart board	15
	Graphing calculator TI-89 (Titanium)	210
	Multimedia projector	15
	Bulletin boards	30
	5-drawer filing cabinet	30
	Textbook built-in shelf	15
	Per-Classroom built in storage	15
	Electric pencil sharpeners	30
	Teacher podium	30
	Emergency light	15
	Desktop Computer	15
	Laser printer	15
	Surge Protector	15

The Math Department wishes to have our own department lounge that has the following:

Item No.	Item	Quantity
	Photocopy Machine	1
	Computer Desk	3
	Desktop Computer	3
	Laser Printer	3
	Surge Protector	3
	Boat shape conference table	1
	Conference table chair	15
	Whiteboard 4x6	1
	Men's Restroom	1
	Women's Restroom	1
	Kitchen/Sink	1

SCIENCE DEPARTMENT INPUT

Facilities Specifications

Chemistry Laboratory/Classroom (1440 square feet) (60 square feet/student)

4 Student, Double-Sided Service Centers with Full Cupboard

Lockers for each laboratory/classroom

Ground-fault interrupters (GFI) (in wall)

Water heaters

Eyewash and Safety shower per Chemistry Laboratory/Classroom

Several 20-amp circuits per Chemistry laboratory/classrooms

Fume hoods (two per chemistry laboratory/classroom)

Gas lines

Clearly labeled manual control valve for shutting off the gas in preparatory room for Chemistry Laboratory

Forced ventilation: minimum rate of eight changes of air per hour for occupied science laboratory/class

Sprinkler System

Deep, enameled-porcelain janitor's slop sink

Alarm System

Preparatory Room between Chemistry Laboratory/Classrooms

Eyewash and Safety shower per Preparatory Room where hazardous materials used

Forced ventilation: minimum rate of eight changes of air per hour for occupied science laboratory/class

Sprinkler System

Alarm System

Wall Mounted Cabinets

Floor Mounted Cabinets and Drawers

Chemical Vented Storeroom

Chemical Vented storeroom doors that are lockable, fire proof, and open outward

Mounted storage for acids (wooden not made of metal)

Mounted storage for flammables (Wooden not made of metal; Underwriters Laboratory UL approved);

Mounted storage for corrosives (wooden not made of metal)

Mounted storage for chemicals (dedicated lockable chemical storage cabinet designed for chemicals)

Mounted shelves (wooden shelves w/lip, plastic support, & other material that resist corrosion and sag

Forced Ventilation: continuous-forced ventilation at 12 changes per hour

Sprinkler System

Alarm System

Laboratory/Classrooms (1440 square feet) (60 square feet/student)

4 Student, Double-Sided Service Centers with Full Cupboard

Eyewash and Safety showers

Lockers for each laboratory/classroom
Ground-fault interrupters (GFI) (in walls)
Water heaters for laboratory/classroom
Several 20-amp circuits per Laboratory/classrooms
Fume hoods (laboratory/classroom)
Forced ventilation: minimum rate of eight changes of air per hour for occupied science laboratory/class

Sprinkler System

Deep, enameled-porcelain janitor's slop sink

Alarm System

Gas lines
Clearly labeled manual control valve for shutting off the gas in preparatory room for Laboratory/Classroom

Preparatory Room between Laboratory/Classrooms (Anatomy & Physiology, Biology, Permaculture, Ph

Eyewash and Safety shower per Preparatory Room
Ground-fault interrupters (GFI)
Forced ventilation: minimum rate of eight changes of air per hour for occupied science laboratory/class
Sprinkler System
Alarm System
Wall Mounted Cabinets
Floor Mounted Cabinets and Drawers

Equipment Storeroom

Ground-fault interrupters (GFI)
Sprinkler System
Alarm System

Bookroom

Ground-fault interrupters (GFI)
Sprinkler System
Heavy duty Book Shelves
Alarm System

Teacher Workroom

Open Storage Cabinets 48" x 22" x 84"
Wall Storage cabinets for workroom
Storage Cabinets with tote trays
Microscope Storage Cabinet, 30 Compartments, 48 x 16 x 84" H
Microscopes
Stereomicroscopes
Ground-fault interrupters (GFI)
Sprinkler System

Sink
Tables
Stackable Chairs
Paper Towel Dispenser
Soap Dispenser
Laser Printer
High Speed Scanner
Alarm System

SCIENCE DEPARTMENT Collateral Equipment

4-Student Double-Sided Service Center with Cupboard and Drawers
Actiview
Alpine Glaciation model
Aprons
Beakers Various Sizes (Case)
Biohazard Waste Disposal
Blackboards
Book shelves 4 Tier
Bulletin Board 60" x 36"
Bunsen burner
Cell Models
Classroom Responders
Coastal Plane model
Coastline submersion model
Computer Desk
Continental Glaciation model
Deluxe Instructor's Desk with Sink on Right
Desk Top Computer
Display cabinet
Display Model Clam
Display Model Crayfish
Display Model Earthworm
Display Model Frog
Display Model Grasshopper
Display Model Perch
Dissecting Tray Large
Dissecting Tray Small
Earth model large
Earth model medium
Earth's moon medium
Earth's moon small

Erlenmeyer Flask Various Sizes (case)
Eye Dropper Glass Bottle
Fault block Mountains model
Fire Blankets
Fire Extinguishers
First Aid Kits
Glass Medicine dropper
Graduated Cylinders Various Sizes (case)
Heavy Duty Steel Utility Shelf 5 Tier, for Storage rooms
Hot Pads
Hot Plates
Lab Stools
Laboratory Safety Goggles
Laboratory Safety Goggles Cabinet
Laptop
Laptop Locks
Leaf cross section model
Line conditioners
Material Safety Data Sheet DVD
Meiosis Models
Meter Sticks
Microscope Slide cabinets
Microscope Storage Cabinet, 30 Compartments, 48 x 16 x 84" H
Mitosis Models
Mobile Lab Cart with Chemical resistant coating
Mobile Laptop cart, charger with wifi router
Mortar
Multimedia mobile carts with storage
Paper Towel Dispenser
Pestle
Plastic 12 test tube holder
Prepared Slides Assorted Set
Pressure Cooker
Projector Screens
Promethean Boards
Promethean Smart Board with accessories
Pull Scales
Rock Cycle Model
Rock Cycle Mount
Round Steel Wastebasket 5.8 gal.
Showcase cabinets

Sink and Storage cabinet
Slide Storage Cabinet
Specimen Bottle
Specimen Jars
Stainless Steel Trolleys
Stem cross section model
Stereomicroscopes
Stirring rods
Storage Cabinet 30" x 15" x 66"
Student Combo Desk & Chair Chrome Frame (36 in)
Student microscopes
Teacher Chair
Teacher Desk (double pedestal) Model #88004
Teacher Filing Cabinet (4 Drawer)
Teacher Lectern
Telephone
Test Tubes 150 mL (case)
Triple Beam Balance
Triple Beam Balance Mobile Cart
UV sterilizing cabinets
Wall Mount Guam Classroom Flag, 2' x 3'
Wall Mount U.S. Flag, 2' x 3'
Wall Service Bench
Wall Storage cabinets for classrooms
White Boards 4 x 6
Wooden 12 test tube holder

Anatomy & Physiology

Basic Anatomy and Atlas Slide Set (#311980)
Basic Medical Histology Slide Set
Human Brain Model (15 parts)
Human Circulatory Model
Human Ear Model
Human Elbow Cross-Section Model
Human Eye Model
Human Female Half Pelvis Model
Human Female Reproductive System Model
Human Fetal Development Model

Human Half Head Model
Human Head and Neck Model
Human Heart Model (Giant)
Human Hip Cross-Section Model
Human Kidney Model
Human Kidney, Nephron, and Glomerulus Model Set
Human Knee Cross-Section Model
Human Lung Model
Human Male and Female Urinary System Model
Human Male and Female Muscular Model
Human Male and Female Torso Model 20 parts
Human Male Half Pelvis Model
Human Male Reproductive System Model
Human Manikin
Human Nerve Ending and Synapse Model
Human Neuron Model
Human Shoulder Cross-Section Model
Human Skeleton Cabinets
Human Skeleton Model
Human Skin Model
Human Stomach Model
Human Urinary System Model
Human Vertebrae Spinal Cord Dissection Model
Lung Function Model

Biology

DNA Model Kits
DNA Model Kits
Droppers
From Egg to Tadpole Microscope Slide Set
Genes and Consequences Classroom Kit
Heredity of Human Traits Lab Investigation Kit
Heredity of Human Traits Lab Investigation Kit
Human Pathology Survey Slide Set
Lab Safety, Wall Chart
LaMotte Green Water Quality Monitoring Kit
Lens paper (case)
Microscope slide warming table
Microscope slides w/ coverslips (box)
Periodic Table, Wall Chart
Portable electronic scales

Prepared microscope slides with specimen (assorted box)

Printer with scanner

Stain Kit

Staining Dish, Glass (20 slides)

Teaching light microscope with digital interphase

Teaching Stereomicroscope with digital interphase

Water Quality Monitoring Kit

Chemistry

Buret clamps

Burette, acrylic, 50 ml

Burette, acrylic, 50 ml

Cast iron support ring with acid resistant finish

Cast iron support ring stand with acid resistant finish

Distillation apparatus

Glass Disposal Container

Geiger counter

Geiger counter

HDPE Pipet washers

HDPE Pipet washers

Magnetic stirring bar set

Magnetic stirring bar set

Magnetic stirring bar set

Magnetic stirring bar set

Microwave oven

Neulog Ammonium Ion-Selective Sensor

Neulog Calcium Ion-Selective Sensor

Neulog Chloride Ion Selective Sensor

Neulog Colorimeter Sensor

Neulog Conductivity Sensor

Neulog Infrared Thermometer Sensor

Neulog Nitrate Ion-Selective Sensor

Neulog Oxygen Sensor

Neulog pH Sensor

Neulog Pressure Sensor

Neulog Rechargeable Battery Module

Neulog Salinity Sensor

Neulog Soil Moisture Sensor

Neulog Temperature Sensor

Neulog USB Module

Neulog USB Module

Neulog USB Module
Neulog USB Module
Neulog UVA Sensor
Neulog UVB Sensor
Neulog Voltage Sensor
Neulog Wide-Range Temperature Sensor
Neulog WiFi Module
Safety Ladder
Spark-free Refrigerator with Ice-maker
Spectrophotometer with cuvetts
Spectrophotometer with cuvetts
Stopwatch or timer
Stopwatch or timer
Test tube brush
Test tube brush
Test tube, 15X125, 12/pk
Test tube, 15X125, 12/pk
Test tube, 18 x 150, 12/pk
Test tube, 18 x 150, 12/pk

Marine Biology

10 Gallon Aquarium
Commercial Paper Shredder
Compost bins
Glass Crusher
Rubbermaid tupperware containers (20 gallon containers)
Wood Chipper

Permaculture

Wheelbarrow
Bow rake
Brix refractometer
Drip irrigation system for 25 raised beds
Gardening gloves
Hose (50 ft)
Hose 100 ft
Pitchfork
Recycling bins (plastic, aluminum/tin, paper)
Shovels
Tool shed
Water catchment

Physics

Air Powered Projectile Classroom Set
Color & Spectrum Discovery Pack
Complete Push Pull Spring Scale Set
Concave Convex Mirror Set
Constant Velocity Cars
Diffraction Grating Glasses Classroom Set
Digital Strobe
Electricity & Magnetism Bulb Demo
Electricity & Magnetism Discovery Pack
Electronic Balance
Flex Cam
Force Table
Friction Rod Kit
Go Motion Sensor
Green Laser
Handheld Color Mixing Demo
Human Dynamics Cart
Laser Pointer Education Kit
Laser Ray Box and Lenses
Laser Tripod
Laser Viewing Tank
Lens Set
Magnetic Field Model
Magnetic Field Observation Box
Magnetic Field Observation Box
Magnetism Discovery Pack
Mega Mirrors
Mirage
Ohm's Law Experiment Kit
Physics Workshop Bundle
Plasma Globe
Quantitative Spectroscopes
Reflect-View
Reflection & Refraction Discovery Pack
Spark Timer
Spectrum Analysis Set
Standing Wave Kit (10pack)
Static Charge Indicator
Steel Bar Magnets

Steel Bar Magnets

Sympathetic Tuning Fork Set

Tuning Fork Set

Velocity Radar Gun

Vertical Acceleration Demonstrator

Violet Laser

Quantity

4

24

96

40

2

4

16

8

4

2

4

4

4

4

2

2

2

2

2

throughout room

throughout room

2

4

2

2

2

2

2

2

2

2

14

84

14

312

112

7

56

4

14

14

14

14

14

7

7

7

35

7

7

7

throughout room
throughout room

1

8

1

1

1

8

1

10

1

1

3

6

1

2

30

30

8

1

1
5
18
1
1
1
1
1

32
18
1
180
40
1
18
18
36
240
4
18
1
1
18
1
18
18
6
4
4
4
4
4
4
4
30
30
1
1
1
1

40
60
1
14
18
14
60
40
18
30
90
432
90
3
30
30
1
36
1
4
90
2
2
4
18
1
32
18
18
32
48
4
2
18
18
18
6
1
1
18
7

18
2
32
32
6
1
30
40
18
432
60
18
18
18
18
18
40
40
8
3
18
18
18
18
36
48

1
1
1
1
2
1
2
1
2
1

1
1
1
1
1
1
1
1
1
1
1
1
1
1
1
2
2
1
1
1
4
4
1
1
2
1

15
15
30
1
1
5
5
1
1
1
1
1
1
3
1
4

1
1
1
1
1
1
1
2
2
1
1
15
15
4
4
2
2
2
2

12
1
6
1
20
1

2
2
1
2
60
2
1
2
14
2
1
1

1
1
5
5
10
1
1
1
1
5
1
5
5
5
1
1
1
1
5
1
1
5
1
1
1
1
1
1
1
1
1
5
5
1
10
5
1
5
1
1
1
5

1
1
1
1
1
1

9D

9D

Counter

Counter

Counter

Counter

Counter
Counter
Counter
Counter
Counter
Counter
Counter

9D

9D

9D

9D

Counter

Counter

|

ProStart

ELY BLANCHE HIGH SCHOOL
FAMILY AND CONSUMER SCIENCE
CULINARY OPERATIONS (ProStart)

VI. SPECIAL CONSIDERATIONS (continued)

(17) Instructional Aids

Classroom/Restaurant – Provide a Conference Presentation Cabinet 48" H x 72" W at the front of the classroom (teacher zone), and two 4'x8' tackboards with two inch continuous map rail over both. The top of the Presentation Cabinet is to be 92" AFF. The top of the tackboard should be 7' high AFF.

(18) Other Considerations

Dry Storage should have temperature and humidity controls and be equipped with locks. The dishwashing area should be near the dining area to avoid carrying soiled dishes across the kitchen. Paper towel dispensers should be close to the dishwashing area. Outside service area should have provisions for cleaning garbage cans under high outside pressure. Area should be paved and equipped with drains to carry off waste water.

Kitchen – Productivity of employees can be increased with well-planned space. Kitchen equipment should be arranged in logical order by work area. Convenient grouping within work area is important. Various areas may be combined or overlapped, depending on the size of the department.

In general, the following grouping shall be observed:

1. Combi-steamer, tilting skillet, convection oven and electric range should be under hood and convenient to cold storage.
2. Oven's, mixer and baker's table convenient to each other and to the three compartment pot sink.
3. Vegetable sink and food cutter near each other and convenient to cold storage.
4. Cold storage convenient to delivery entrance, vegetable and salad preparation

Aisle Allowance - Optimum aisle allowances are as follows:

Between oven and work tables	3'-6"
Traffic aisles	3'-6" to 4'-0"
Traffic aisles where portable equipment is used	4'-0"
Between two work tables	3'-6" to 4'-0"
In front of sinks and drain boards	5'-0"

Laundry Room/Linen Storage and Restroom/Locker Room - Should be located away from the food preparation area. The doors should not open directly into the kitchen or dining area.

Public restrooms for visitors/guests being served in the dining room should be located in close proximity to the facility.

Custodial Service Closet – Refer to "General Use Facilities" for specifications.

ELY BLANCHE HIGH SCHOOL
FAMILY AND CONSUMER SCIENCE
CULINARY OPERATIONS (ProStart)

11/19/07

VI. SPECIAL CONSIDERATIONS (continued)

(17) Custom Casework

A. Work Counter

Classroom/Restaurant - Provide waitress station in dining room 72"Lx36"Dx30"H with adjustable shelves, two drawers and locking doors. (This unit will have a sink with hot and cold water and icebin with drain.)

B. Cabinets/Shelving

Kitchen/Lab - One lockable storage cabinet 4'Wx15"Dx7'H, located next to dishwashing area to store clean dishes. This cabinet must be of sturdy construction and securely attached to wall. Shelves must be reinforced to hold 100 place settings of commercial china. Provide wire rack around shelving.

Dry Storage - Shall accommodate food supplies, all paper and plasticware used mainly by the cook, received in case lots, and often stored as received. Adjustable metal wire shelves shall be designed to carry the loads placed upon them and located to provide the largest possible shelf area in a given room, allowing a minimum of 4' between shelves; single shelves 24" deep along the walls. Shelves shall be metal wire to allow air circulation and shall provide vertical clearance of one foot between floor and two lower shelves and 1'6" between two upper shelves.

Laundry Room/Linen Storage - Wall cabinet units shall be located above the washer/dryer for storage of cleaning supplies. Base cabinets on either side of washer/dryer for storage of cleaning supplies, work space and other storage. A small drawer and cabinet space must be provided for the storage of mops, brooms and other cleaning supplies.

Provide Linen Storage cabinet on wall opposite washer/dryer, 4'Lx24"Dx84"H. Lower portion for storage of uniforms and table skirts, upper portion for folded table linens (See Cut AY).

Equipment Storage - Maximum allowable 24" deep solid shelving for the storage of footed equipment. Shelving to be secured to walls. First shelf to be 4" above finished floor.

Classroom/Restaurant - Provide lockable storage cabinets under each window, 24"Dx30"H. Cabinets to have three adjustable shelves.

Provide multimedia cabinet in teacher zone, 48"Lx24"Dx34"H (See Cut 1B)

Provide "u" shaped Waitress/Teacher Demonstration Center. See cut

Teacher Planning - Provide two adjustable bookshelves, 4'Wx12"Dx7'H.

C. Other Custom Casework

N/A

ELY BLANCHE HIGH SCHOOL
FAMILY AND CONSUMER SCIENCE
CULINARY OPERATIONS (ProStart)

VI. **SPECIAL CONSIDERATIONS (continued)**

(11) **Electrical (continued)**

Classroom/Restaurant - Electrical outlets above waitress station. Provide electrical outlets above all built-in work counters. Duplex outlets on wall every 6'. Provide for at least two 220v outlets and high amperage in more than one area of the room for use with portable food serving units.

Provide sufficient power receptacles and dedicated circuits to avoid nuisance tripping of electrical panels for all In-Contract and Not-In Contract equipment. Provide one 20-amp circuit with 2 quad outlets at multimedia cabinet. Provide outlet at ceiling mounted LCD projector. Provide outlet below interactive board. Provide two 20-amp circuits at laptop computer charging station. Provide single receptacle outlet at each box. Use dark blue cover plate at these two outlets. Provide quad outlet at Teacher's desk.

Patio - Provide four weather proof duplex outlet at outdoor dining area

Laundry Room/Linen Storage - Provide outlets for washer and dryer.

(12) **Gas and Air**

(Reference - School Board of Broward County Mechanical Design Criteria)

No compressed air needed. A/C to be provided to all rooms. Provide natural gas to kitchen for gas fired stoves and ovens.

(13) **Safety**

All spaces must meet the applicable codes.

Master cut-off must be provided for all equipment except refrigeration. Utility shut-off devices adjacent to all equipment. Provide Universal Power Distribution System at Hood.

One fire blanket must be located in Kitchen/Lab. Fire extinguishers in close proximity to all cooking equipment must meet NFPA10 standards.

Provide GFI receptacles in all areas.

(14) **Fencing**

(Reference - School Board of Broward County Architectural Design Criteria)

N/A

(15) **Service Drives**

(Reference - School Board of Broward County Civil Design Criteria)

Paved access drive for delivery of equipment, supplies and garbage pick-up.

(16) **Parking**

(Reference - School Board of Broward County Civil Design Criteria)

Convenient parking is needed for public attending dining functions, and delivery of consumable supplies.

ELY BLANCHE HIGH SCHOOL
FAMILY AND CONSUMER SCIENCE
CULINARY OPERATIONS (ProStart)

VI. **SPECIAL CONSIDERATIONS (continued)**

(10) **Communications (continued)**

Classroom/Restaurant - Provide a control center in the teacher zone with a two-way intercom/clock, Provide wireless and wired network connections as per Technology Standards for computers and printers. Locate data ports at input selection console in multimedia cabinet. Locate Projector control modular at 42" AFF at multimedia cabinet. Locate data port at Teacher Desk. Provide conduit with pull-wire at multimedia cabinet to ceiling mounted speakers. Provide 2 1" conduit with pull-wire from input module (double gang box) at multimedia cabinet to LCD projector. Provide double gang box, mounted at 42" AFF above multimedia cabinet and one conduit, with pull-wire to the ceiling line for LCD projector control.

Locate instructional television (BECON) connection at multimedia cabinet.

Teacher Planning - Provide data quad at teacher's desk. Teacher computer and printer workstation to be connected to the schoolwide network. Data port needed for four devices.

Locker Room - Provide intercom system speakers.

(11) **Electrical**

(Reference - School Board of Broward County Electrical Design Criteria)

Kitchen/Lab - Master cut-off must be provided for all equipment except refrigeration units. All electrical work shall be in compliance with local and national electrical codes. Place keyed reset switch near teacher planning office. Light switches adjacent to doors.

Provide retractable overhead outlets for bench and floor model mixers. Provide retractable overhead outlets near baker's table and cook's table or provide cords of sufficient length to reach table top and provide hook to raise cords when not in use.

Provide sufficient electrical power outlets for all equipment listed in all sections of this document. Sufficient outlets must be provided for, proofing cabinet, hot food station, ~~steamer pressure unit~~, dishwasher, ~~deep fat fryer~~, convection oven and all other equipment.

All major appliances should be able to be in operation at the same time without difficulty, along with various small appliances.

Restrooms/Locker Rooms - Light switch on inside of each door.

Equipment Storage - Light switch next to the door on inside.

Teacher Planning - Duplex wall outlets every 6' of running wall length. Provide 20 amp dedicated circuit adjacent to data quad.

ELY BLANCHE HIGH SCHOOL
FAMILY AND CONSUMER SCIENCE
CULINARY OPERATIONS (ProStart)

VI. **SPECIAL CONSIDERATIONS (continued)**

(8) **Doors (continued)**

Classroom/Restaurant/Patio - Provide Storefront doorway from Classroom. Provide maximum allowable window/viewing area.

Storage - Doors to be keyed alike but separately from front entrance doors.

(9) **Water**

(Reference - School Board of Broward County Mechanical Design Criteria)

Kitchen/Lab - Rapid recovery hot water system. 180° water is needed to sanitize dishes and utensils. Cold water line to all ice makers, electric water cooler and beverage station. Hot and Cold water to all other areas of the kitchen, including the utility sink and hand sinks. Hot water lines must be provided to steam jacketed kettle and steam pressure cooker. Drainage must be provided for this equipment. Provide hot and cold water to two (2) Washdown Stations. Provide 110 degree hot water to 3 foot operated hand sinks for wash up.

Cooking Area - Tilting Skillet and steam cooker shall be provided with a separate trough floor drain and hot and cold water, a Tilting Skillet filling faucet accessible for cooking and cleaning equipment. Install a drain with cover in front of the steam kettle drain spout.

Dishwashing Area - Hot and cold water shower type flexible faucet head to be used for cleaning dishes.

Classroom/Restaurant - Provide hot and cold water to waitress station.

Laundry Room/Linen Storage - Hot and cold water to washing machine and utility sink.

Restrooms/Locker Room - Hot and cold water to sinks, cold water to commode.

Custodial Service Closet - Provide hot and cold water to 12" floor slop sink.

(10) **Communications**

(Reference - School Board of Broward County Electrical Design Criteria)

Provide two-way intercom between the front office, teacher planning office, classroom, dining room, and kitchen. Wall clock in kitchen.

Kitchen/Lab - Provide a wireless mike sound system in the demonstration kitchen area. Provide data quads. Master control center at adjacent to Locker Room containing clock, school-wide intercom system, BECON connection and data quad.

ELY BLANCHE HIGH SCHOOL
FAMILY AND CONSUMER SCIENCE
CULINARY OPERATIONS (ProStart)

IV. SPECIAL CONSIDERATIONS (continued)

(4) Walls (continued)

Classroom/Restaurant – Color treatment to be provided by designer.

Equipment Storage – Scrubbable, grease proof walls.

Restrooms/Locker Rooms – Non-staining ceramic tile.

(5) Ceiling

(Reference - School Board of Broward County Architectural Design Criteria)

Acoustical tile shall be used for all ceiling treatments except where specified. Laboratory (kitchen) to be 10 feet high; related areas to have standard height. Kitchen area ceiling treatment to be of a material to be easily cleanable.

(6) Lighting

(Reference - School Board of Broward County Electrical Design Criteria)

Natural and artificial light will supplement each other, if possible. Artificial lighting shall be such as to permit full nighttime use of the facility. Fluorescent lighting standard. Emergency lighting shall be provided in all rooms of the facility. All areas should have independent lighting switches to control lighting.

Classroom/Restaurant - Zone control required to darken room for presentations.

Equipment Storage - Lights should be recessed and covered to prevent breakage.

(7) Windows

(Reference - School Board of Broward County Architectural Design Criteria)

Windows in walls and doors to be of safety glass to provide full visibility into Classroom/Restaurant and Teacher Planning office.

Kitchen/Laboratory – Provide outside wall windows for fresh air ventilation and natural light. Provide a vision window between kitchen area and classroom for teacher supervision. Sill height to be 36" above finished floor.

Teacher Planning – Provide windows for viewing into kitchen and classroom. Sill height to be 36" above finished floor.

Classroom/Restaurant and Kitchen – Provide large windows, on exterior wall, overlooking Patio Dining or landscaped area. Provide window darkening treatment for all windows for room darkening during AV presentation.

(8) Doors

(Reference - School Board of Broward County Architectural Design Criteria)

All doors should be 36" wide, fire rated, commercial grade and lockable. Refrigerator doors and freezer doors shall have locks.

Classroom/Restaurant – Provide two doors at least 4' wide opening both ways into lab. Exterior doors shall be metal. All doors shall have safety glass located on upper portion.

ELY BLANCHE HIGH SCHOOL
FAMILY AND CONSUMER SCIENCE
CULINARY OPERATIONS (ProStart)

VI. SPECIAL CONSIDERATIONS

(1) Heating/Cooling/Ventilation

(Reference - School Board of Broward County Mechanical Design Criteria)

Climate control required for all areas, including storage areas. Special low humidity environment for dry goods storage area.

All cooking equipment should be under a forced ventilating system. Fire extinguishing system should be a part of the hood with an adequate exhaust fan.

Include window on exterior wall if design permits to provide fresh air ventilation.

Laundry Room/Linen Storage - Provide ventilation for dryer.

(2) Acoustical

(Reference - School Board of Broward County Architectural Design Criteria)

Standard treatment in all areas not specified herein.

Kitchen and Laboratory - Permanent walls between lab/kitchen and related areas should be insulated to contain noise.

(3) Floor

(Reference - School Board of Broward County Architectural Design Criteria)

Kitchen and Laundry Room - Floors shall be floating/poured solid non-skid surface with continuous sides that go 5" up the outer walls. Floors should be scrubbable, no-wax and grease proof. Floor drains placed for ease of cleaning. Floor surface designed to allow for easy cleaning (washing) and flow of water when cleaning. All floor drains shall contain a grease trap-separator.

Restrooms/Locker Rooms - Non-skid tile floors and walls for easy cleaning, stain proof materials to be used throughout.

Classroom/Restaurant, Equipment Storage and Teacher Planning - Commercial grade rubberized non-skid vinyl in colors chosen by designer. Provide floor drain at waitrees station.

Walk-in Refrigerator/Freezer Area - Floor must be level with kitchen floor; recess floor under refrigerator/freezer so that floor of refrigerator/ freezer is level with the kitchen floor; provide trough floor drain at walk-in cooler entrance, steam kettles and dry storage door. Quarry tile walk-in floor.

Patio - Sealed concrete, painted an earth tone.

(4) Walls

(Reference - School Board of Broward County Architectural Design Criteria)

Kitchen, Laboratory, All Related Areas - Should be ceramic tile not less than 6' from floor to top with bull nose coping; walls in Classroom/Restaurant areas should be of impervious materials, easily cleanable and scrubbable. Area should be acoustically treated. Walls between Kitchen and Classroom/Restaurant and Kitchen/Teacher Planning shall contain maximum allowable window area with safety glass from 36" AFF sill to standard window height.

ELY BLANCHE HIGH SCHOOL
FAMILY AND CONSUMER SCIENCE
CULINARY OPERATIONS (ProStart)

V. PROGRAM FURNITURE AND EQUIPMENT (continued)

Space/Area	No. of items	In Contract	Not In Contract	Description Furn./Equip.
Classroom/ Restaurant (continued)	1		X	Interactive Board, with Wireless Card
	1	X		Set of projection screen brackets (See Section VI, #18 for specifications)
Restroom/Locker Room (2)	3	X		Three-wide double-tier lockers, 78"x36"x12", Lyon 1A-8349 (See Cut AX)
Laundry Room/ Linen Storage	1	X		Clothes washer, heavy duty commercial (See Cut AI)
	1	X		Clothes dryer, heavy duty commercial (See Cut AJ)
	1	X		Linen Storage Cabinet (See Section VI, #17B for specifications)
Dry Storage	1	X		Adjustable metal shelving units (See Section VI, #17B for specifications)
Equipment Storage	1	X		Adjustable metal shelving units (See Section VI, #17B for specifications)
Patio Dining	10		X	Assorted Mobile potted plants
	4		X	Mobile Light units
	10		X	All weather 48" D tables
	40		X	All weather straight back chairs

ELY BLANCHE HIGH SCHOOL
FAMILY AND CONSUMER SCIENCE
CULINARY OPERATIONS (ProStart)

V. PROGRAM FURNITURE AND EQUIPMENT (continued)

Space/Area	No. of items	In Contract	Not In Contract	Description Furn./Equip
Kitchen (continued)	1	X		Commercial Microwave oven, Hobart or Panasonic. 2600 watt, large capacity, 230 v, 20 amp, single phase (See Cut AH)
	1	X		Stack oven – 3 deck, 70-1/2"H x36"Wx39"D (See Cut AK)
	1	X		Grill, Counter Unit, Commercial, 3 phase, Star mfg. 536TGA or owner approved substitute, 36wX24d grill area. (See Cut AL)
	1	X		Electric Steam pressure cooker, 240 volt, 8.5 kw, 3 phase, Cleveland brand, with bench. (See Cut AM)
	2	X		Robo Coupe with grater attachment, continuous feed, 240 v, 1 hp, two speed. Model R4N. (See Cut AN)
	1	X		Char broiler – 36"x15"x26", gas fired with stand, South Bend model SCB-36R or Vulcan 1X1716. (See Cut AQ)
	2	X		Equipment stand – 85-1/2" x27"x41" (See Cut AR)
	1	X		Lockable storage cabinet, 48"wx15"dx84"h (See Section VI, #17B for specifications)
	1	X		30 qt. Power mixer, floor model by Hobart, 14" shaft, 3/4 hp motor, 115v, single phase, with splash cover, dough hook, flat beater, bowl and wire whip. (See Cut AS)
	2	X		Cook's table with drawers and pot rack – 60" L

ELY BLANCHE HIGH SCHOOL
FAMILY AND CONSUMER SCIENCE
CULINARY OPERATIONS (ProStart)

V. PROGRAM FURNITURE AND EQUIPMENT (continued)

<u>Space/Area</u>	<u>No. of items</u>	<u>In Contract</u>	<u>Not In Contract</u>	<u>Description Furn./Equip</u>
Kitchen (continued)	1	X		Icemaker, cube with sanitary storage bin with 75 lb. capacity. 24"wx24-5/8"Dx34-1/4"H plus 4 stainless steel legs, 6" high. Air cooled: 115/60/1, 8.3 amps, 2 wires, min, circuit ampacity 9.6, max. fuse size 15. Required 20 lbs. flowing water pressure, without interruption. Scottsman-AFI or owner approved substitute. (See Cut AD)
	1	X		Gas restaurant range with 6 burners, big (26"x26-1/2") ovens and 1-24" griddle with high raised sides and ceramic radiant broiler. Complete with easy to clean porcelain lining, 60-3/4"Wx29-3/4"Dx59"H, Vulcan 260L-77R or owner approved substitute (See Cut AE)
	2	X		Waste King commercial waste disposal 1/3 HP opening. Electrical spec: 115V, 1 phase Waste King 500-1 or owner approved substitute (See Cut AF)
	1	X		Fry kettle, complete with factory attached, heavy duty neoprene cord and plug and adjustable 4" legs. Twin frying baskets; patented heating elements, precision thermostat, cool zone, stainless steel construction, lift-out elements, secondary "overheat control", removable frying pot, temperature light, crumb cradle 14-3/4"Wx28-5/16"Dx17"H. 208V, 60 Hz., single-phase. Wells F-49 or owner approved substitute (See Cut AG)

ELY BLANCHE HIGH SCHOOL
FAMILY AND CONSUMER SCIENCE
CULINARY OPERATIONS (ProStart)

V. PROGRAM FURNITURE AND EQUIPMENT

Space/Area	No. of items	In Contract	Not In Contract	Description Furn./Equip.
Kitchen	1	X	GAS	Electric convection oven, stainless steel exterior, stainless steel rear body enclosure, stainless steel legs; - HP motor, 208 VC, 60 Hz.; Magnetic circuit breakers provided for complete overload protection, Blodgett Model VIII or owner approved substitute (See Cut A)
	1	X		Tilting Skillet, Durapan by Cleveland Stainless Steel Cleveland SGL-30-TR or owner approved substitute. (See cut B.)
	1	X		Drinking fountain, 115V, single phase Elkay (See Cut C)
	2	X		Bakers rack, 22-3/4"Wx29-1/2"Dx66"H, with thirty-seven 18"x26" tray slides, constructed of heavy duty aluminum with top, bottom and frames all of welded construction. Accessories include perimeter bumper at bottom and stainless steel push handle. Victory Mobile, EC-1837-3 or owner approved substitute (See Cut D)
	1	X		Thermodyne <u>conductive cooking system</u> (combi unit), Model 700CT. 3foot size - counter top cook and hold system. With stainless steel bench. (See Cut E)
	1	X		Due - Automatic Espresso/Cappuccino machine. Model number Due A. 220V, 17 amps, Faema or owner approved substitute. (See Cut F)
	1	X		Storage freezer/self-contained commercial walk-in (144 SF) (See Cut G) <i>Reach-in Double Door</i>

ELY BLANCHE HIGH SCHOOL
FAMILY AND CONSUMER SCIENCE
CULINARY OPERATIONS (ProStart)

V. PROGRAM FURNITURE AND EQUIPMENT (continued)

Space/Area	No. of items	In Contract	Not In Contract	Description Furn./Equip
Kitchen (continued)	1	X		Shelf unit 42X20 for freezer (aluminum) (See Cut H)
	1	X		Shelf unit 54X20 for freezer (aluminum) (See Cut I)
	1	X		Heater/Proofer cabinet, 27"Wx34-3/4"Dx66"H, cabinet of heavy duty aluminum with top, bottom and frame of welded construction, tray slides adjustable electrical 120V/60cy/1ph. Victory Mobile Model UVCH1-66-3 or owner approved substitute (See Cut J)
	1	X		Universal Power Distribution System for gas/electric under hood.
	2	X		Rolling shelves for walk-in refrigerator, galvanized steel (one 60X21, one 48X21) (See Cuts L & M)
	1	X		Refrigerator/self contained; (operational incidcator, panel fully instrumented with visual alarm system, temperature sending dial, power indicator light, adjustable shelves; condensate automatically evaporated, plasticized fincoil, self-closing doors with safety stops. chromium plated hinges, adjustable steel legs, self-adjusting magnetic gaskets, safety grip handles, heavy duty cylinder locks, flush-mounted automatic interior lighting) 115V, 60 Hz., single phase 58-3/8"Wx38-1/2"Dx84"H, Victory RSD-20-S6-EW or owner approved substitute (See Cut N)

ELY BLANCHE HIGH SCHOOL
FAMILY AND CONSUMER SCIENCE
CULINARY OPERATIONS (ProStart)

V. PROGRAM FURNITURE AND EQUIPMENT (continued)

Space/Area	No. of items	In Contract	Not In Contract	Description Furn./Equip.
Kitchen (continued)	1	X	Ready- in Double- door	Refrigerator/walk-in (144 square feet) (See Cut O)
	2	X		Baker's table, 72"Lx30"W, top of 2" thick edge-grained laminated maple reinforced with 1" rods and concealed nuts with a 5" high maple riser on back. Stainless steel wall shelf and pot rack, 12"W mounting channel extra long to receive a 2"x3/16" steel bar for sliding pot hooks. Four foot unit has two brackets. Lee Equipment custom fabrication or owner approved substitute (See Cut R)
	1	X		Mixer table, stainless steel, 20"x24"x22" with shelf, Hobart 205024-1 or owner approved substitute (See R)
	1	X		20 quart bench mixer with stir switch and timer: 1/3 HP motor, single-phase, 115V, 60 Hz, Hobart AS 200 T or owner approved substitute with "B" beater & "D" wire whip, standard S/S 20 qt. Bowl. (See Cut Q)
	1	X		Dishwasher, single water inlet, temperature 120 degrees Fahrenheit to 140 degrees Fahrenheit. Wash and final rinse; pass through upright dish/pot washer. Pump capacity, 45 GP, 1/2HP, single-phase type, furnished for 115-60-1. Standard equipment: two standard commercial racks, 20"x20" each, one peg rack and one combination rack. Also included are dial thermometer, pilot light, line strainer and synchronous timer, 35"Hx24"Wx24"D, Hobart 2E5970 or owner approved substitute (See Cut S)

ELY BLANCHE HIGH SCHOOL
FAMILY AND CONSUMER SCIENCE
CULINARY OPERATIONS (ProStart)

V. PROGRAM FURNITURE AND EQUIPMENT (continued)

<u>Space/Area</u>	<u>No. of items</u>	<u>In Contract</u>	<u>Not In Contract</u>	<u>Description Furn./Equip.</u>
Kitchen (continued)	1	X		Food slicer with solid cast stainless steel knife, 11/4HP motor, totally enclosed, integral with slicer, permanently grease-lubricated ball bearings 115V, single-phase. Six foot flexible 3 wire cord and plug for grounding. Hobart 1712 or owner approved substitute. (See Cut T)
	1	X		Storage case with 4 drawers and sliding doors, 48"Wx24"Dx84"H. Four equal drawers operate steel slides with nylon rollers; shelves adjustable on 1" centers; 1" plastic laminated sliding doors with plastic rollers on anodized aluminum track with lock. LSI 5304 or owner approved substitute
	2	X		Stainless steel hand sink with foot pedal valve and spout. Die stamped one-piece heavy gauge steel bowls with fully covered corners. Seco HS 11-1 H or owner approved substitute (See Cut U)
	2	X		Stainless steel wall shelf and pot rack, 12"W. Mounting channels extra long to receive a 2"x3/16" steel bank for sliding pot hooks. Four foot unit has two brackets. Seco 8952 or owner approved substitute (See Cut V)

ELY BLANCHE HIGH SCHOOL
FAMILY AND CONSUMER SCIENCE
CULINARY OPERATIONS (ProStart)

V. PROGRAM FURNITURE AND EQUIPMENT (continued)

Space/Area	No. of items	In Contract	Not In Contract	Description Furn./Equip.
Kitchen (continued)	15	X		Work table, stainless steel, 30"Wx48"Lx34"H, with four stainless steel legs and cross rail and stainless steel bullet feet, 2" turned-up edge in rear and turned-down on other three sides with heavy gauge channel reinforcing on the underside or top Seco U3048-OS or owner approved substitute (See Cut W)
	1	X		Stainless steel ventilator; centrifugal grease extraction; automatic self-cleaning; automatic fire protection. Installed above cooking equipment. Seco Fabricated or owner approved substitute. (See Cut X)
	1	X		Double compartment, 24"x22" bowl, sink with 24" right drainboard and 60" on the left, with no lapping edges or seams. Two faucet holes on 12" centers over each partition. Stainless steel legs w/stainless steel bullet feet. Drain holes/crumb cup strainer w/long-lasting "Neoprene" live rubber stopper. Seco SS224 RB or owner approved substitute (See Cut Y)

ELY BLANCHE HIGH SCHOOL
FAMILY AND CONSUMER SCIENCE
CULINARY OPERATIONS (ProStart)

V. PROGRAM FURNITURE AND EQUIPMENT (continued)

Space/Area	No. of items	In Contract	Not In Contract	Description Furn./Equip.
Kitchen (continued)	1	X		Triple compartment sink, two sections to be 24"x24" and one compartment 24"x30" with right drainboard to be 24"x36" and 120" extension on the left. One-piece, integral construction with no lapping edges or seams. Two faucet holes on 8" centers over each partition. Stainless steel legs with stainless steel bullet feet. Drain holes with crumb cup strainer and long-lasting "neoprene" live rubber stopper. Seco or owner approved substitute, faucet with goose neck dish pre-rinse with sprayer attachment (See Cut AA)
	1		X	Mobile slicer table, 14 ga. stainless steel top 27"x31"x31"x34"H. Stainless steel gain pan slides 4-1/2" spacing between slides. Legs and cross bracing stainless steel. Heavy duty 4" casters, two with brakes. Slides for 18"x14"x18" pans or trays, Seco 3424 or owner approved substitute
	1	X		Icemaker, flaker with sanitary storage bin with 75 lb. capacity. 24"wx24-5/8"Dx34-1/4"H plus 4 stainless steel legs, 6" high. Air cooled: 115/60/1, 8.3 amps, 2 wires, min, circuit ampacity 9.6, max. fuse size 15. Required 20 lbs. flowing water pressure, without interruption. Scottsman-AFI or owner approved substitute. (See Cut AC)

ELY BLANCHE HIGH SCHOOL
FAMILY AND CONSUMER SCIENCE
CULINARY OPERATIONS (ProStart)

V. PROGRAM FURNITURE AND EQUIPMENT (continued)

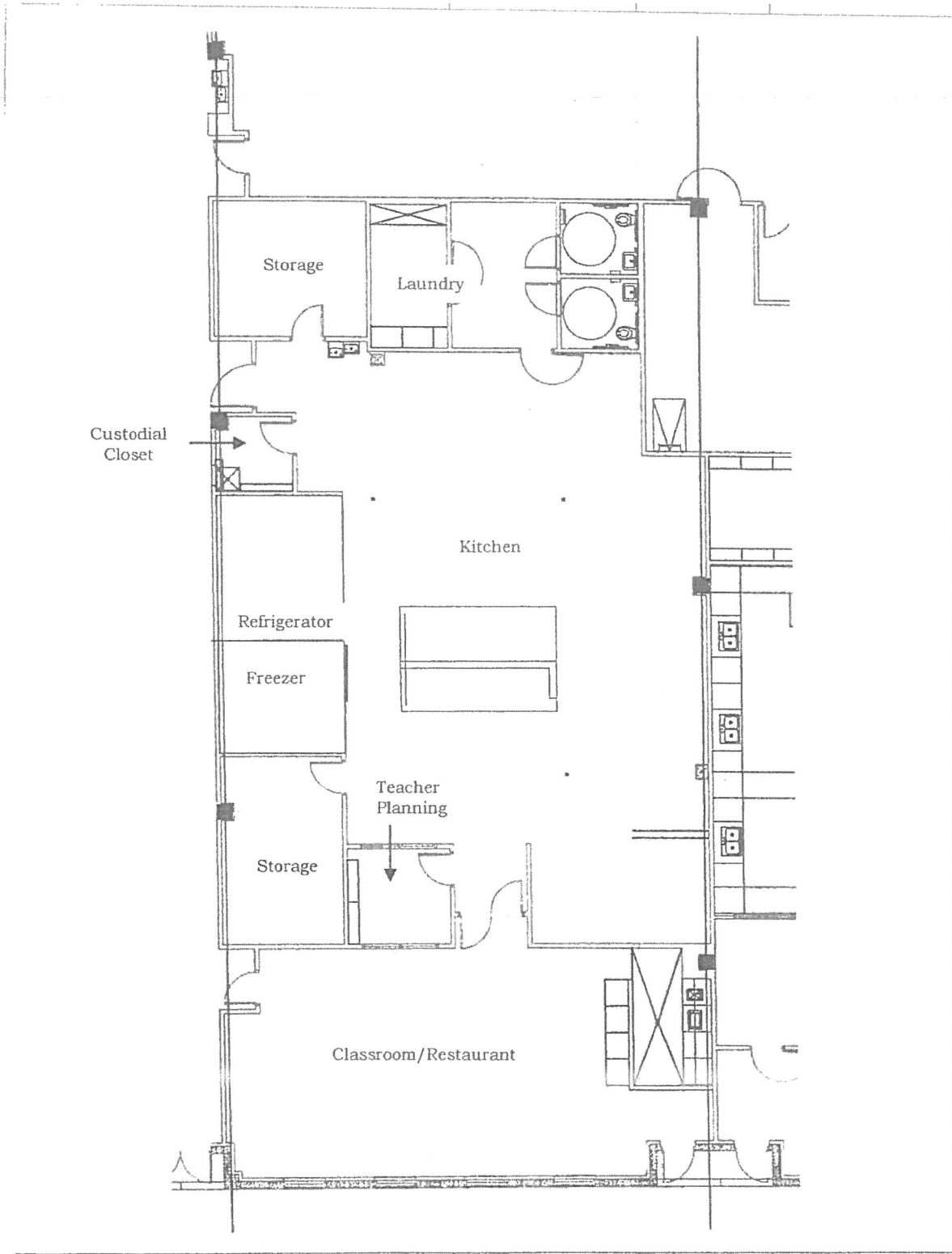
<u>Space/Area</u>	<u>No. of items</u>	<u>In Contract</u>	<u>Not In Contract</u>	<u>Description Furn./Equip</u>
Kitchen (continued)	1	X		Washdown hose station, with hot & cold water mixing valves And Stainless Steel hose rack.
	1	X		Cres-Cor Proofing box – 25X32X70, 120V, 2025W, 20A, 1ph. (See Cut AV)
	1	X		Hot water heater, instant recovery
	1	X		Enclosed locked storage cabinet – 27-1/4"x40-3/4"x68-1/2" (on casters) with two intermediate shelves (See Cut BA)
	1	X		Shelving (See Section VI, #17B for specifications)
Teacher Planning	1		X	Swivel chair, adjustable, upholstered
	1		X	Teacher's desk
	2	X		Bookcases with adjustable shelves (See Section VI, #17B for specifications)
	2		X	Side chairs, upholstered
	2		X	File cabinets with 4 drawers
Classroom/ Restaurant	1		X	Bookcase 36"wx12"dx72"h
	1	X		Waitress station to include icebin and sink (counter with adjustable shelves below 72"Lx36"Hx30"D) (See Section VI, #17A for specifications)

ELY BLANCHE HIGH SCHOOL
FAMILY AND CONSUMER SCIENCE
CULINARY OPERATIONS (ProStart)

V. PROGRAM FURNITURE AND EQUIPMENT (continued)

Space/Area	No. of items	In Contract	Not In Contract	Description Furn./Equip.
Classroom/ Restaurant (continued)	1	X		Teacher Demonstration Center (See Section VI, #17A for specifications)
	1		X	Laptop charging Station
	1		X	Color inkjet printer
	1		X	DVD/VCR Tuner
	1		X	Ceiling mounted LCD projector with mounting bracket.
	1	X		Ceiling mounted projector plate with 6' pigtail (See Cut 1A)
	1		X	Upholstered side chairs
	1	X		Multimedia cabinet (See Section VI, #17B for specifications)
	1		X	Sound equalization system /w Ceiling- mounted speakers
	4		X	Wooden Tray Stands
	12		X	Multipurpose round tables (48") for dining rooms
	1		X	Multipurpose table, 30"x60"
	2	X		Lockable storage cabinets, 48"wx24"dx30"h (See Section VI, #17B for specifications)
	36		X	Stools for Students
	1	X		2-door lockable storage cabinet (See Section VI. 17B for specifications)
	36		X	Student chair, 18" stackable
	1		X	Projection screen (60"X80")

ELY BLANCHE HIGH SCHOOL
FAMILY AND CONSUMER SCIENCE
CULINARY OPERATIONS (ProStart)



New High School Considerations: 120 classroom teachers

Offices needed

- Administrative office (5 administrators)
- Student Support (Discipline) w/ unisex restroom and holding area
- 2 Conference rooms 25pax
- 1 Business Office with security
- 1 Nurse's Office
- 9 Counselor Offices + waiting area for visitors
- ESL Coordinator's Office
- 4 small SPED CRT Office - a medium size (12pax) conference area for IEP meetings
- PE Offices, ROTC, Librarian,
- 1 School Resource Officers Office (2 pax)
- 1 parent holding/waiting area

SUBJECT	NUMBER OF CLASSROOMS NEEDED
English <i>Regular Classrooms</i>	22
Math <i>Regular Classrooms</i>	16
Science <i>(Classroom specifications provided)</i>	15
Social Studies <i>Regular Classrooms</i>	16
ESL and SPED <i>(Special Populations-Small Kine)</i>	5 each (10 Total)
GCC <i>(Classroom specifications provided)</i>	7
Fine Arts PE Health** World Language** CFS ROTC Chamorro** Business <i>**Regular Classrooms</i>	34

TOTAL NUMBER OF CLASSROOMS NEEDED: 120

Regular Classrooms:

- Classrooms large enough to fit 28-30 students
- Closet space for storage, able to be secured
- Classroom equipment/cabinets/woodwork must not be made with pressboard or fake wood.
- Must have adequate electrical outlets with GFCI outlets
- Wiring for overhead multimedia equipment
- Special Education - Basic Life Skills (BLS) - 1 Large classroom with space for Home Life Skills room AND classroom setting - BLS need to be equipped with sink and restroom, and wiring/plumbing for laundry equipment
- Classrooms must be equipped with bulletin boards, whiteboards,
- All doors to have security doors with small glass opening to view classrooms from the outside; all door locks can be opened with 1 master key
- GCC classes to be located in their own wing (Pro-Start, Lodging Management, Marketing, Allied Health, Electronics, Automotive). GCC CTE classrooms equipped with their respective tools, equipment as required by their programs.
- ESL classes with the general ed classes

Computer Labs

- 5 computer labs equipped with wireless internet, printing capabilities, computer desks/chairs whiteboards, bulletin boards, multimedia projector, document camera, smartboards

Library

- Enclosed library to include a media center, computer lab, silent reading for 250 pax
- Wireless capability
- Security doors to include equipment to prevent theft of library materials
- Storage room for media equipment
- Librarian Office
- Book shelves for library books
- Book anti-theft system (gate sensor/alarm)

Auditorium

- Auditorium for a 500 capacity for the performing arts, Choir, Band, etc.
- Orchestra/Band pit/area in front of the stage
- Stage Curtains
- 2 Spot Lights in addition to house lights
- Simple rail system for backgrounds/suspension

Staff/Faculty Rooms

- Faculty/staff work Rooms equipped with a multimedia equipment, computers, furniture, bookshelves, bulletin boards, whiteboards

Restrooms

- All restroom walls must be anti-graffiti and meet all Public Health ratio requirements for 2200.
- Faucet necks must be long enough so that water splash is minimal
- SPED Resource rooms to have unisex restrooms
-

Sports Facilities

- Gym to accommodate 2200 pax – gym
- Scoreboard/ PA system for gymnasium and for the football/soccer field
- Girls'/Boys' Locker Room
- Tennis courts, softball, baseball, football, soccer field.

Fine Arts/Performing Arts Buildings

- Band and choir rooms arena-style, with multi-level built-in risers
- Music rooms' acoustics need to be conducive to sound quality (no echoes, sound bouncing off the walls)
- Art classroom with cleaning area (sink and drying counter) and storage area for equipment
- Dance studio with wall mirrors on 1 wall, and a barre running around the room

Rotunda/Courtyard

- There should be a holding area for students to congregate as a whole before school (after drop-off); during the breaks and lunch time.
- Minimize the crevices that students can hide in.
- Hallways and congregation areas should have benches and/or tables

Lobby – showcase awards, trophies, pictures, etc.

- Greeter's Desk/Help Desk Area

Multipurpose rooms

- Should have movable dividers equipped with folding chairs

Traffic Considerations

- Build a separate traffic (possibly one-way) from the bus stop by Nissho Terrace to Chalan Pasaheru for drop off/pick up of students. This will minimize traffic congestion along Juan Jacinto Road leading to FBLG.
- Easy access drop-off point (outside of fence line, just off traffic access road) to minimize parents stopping and holding up traffic on main road.

Acoustics

- Acoustics in the rooms, library, gym, multipurpose rooms need to be regulated to eliminate echos.
- Consider soundproofing offices in the interest of confidentiality.

Indoor Quality / HVAC

- Easy access for temperature controls for AC - or perhaps the ability to control temperature from a general unit.
- Automatic thermostats

Lighting

- Energy efficient lighting

Safety

- Plan for maximizing the flow of foot traffic during passing times as well as during evacuations Identify an adequate area for building evacuations – location
- Design the building to maximize hallways & grounds supervision
- Control access to grounds/buildings by individuals or POVs.
- Faculty parking secured access
- Student parking secured access
- Hallway cameras and security alarm system
- Elevators in the event it will be a 2-story build
- Access Doors to buildings should be self-closing and closes properly if double doors.
-

Interior Design

Technology Updates

- All classrooms and hallways be wired for a Public Address system with the capability to wire for video feeds in the classrooms.
- Secured Wireless internet

A. Barcinas
Health

SSHS High School	COLLATERAL EQUIPMENT	
Item #	ITEM	QTY
1	Teacher Desk	1
2	Teacher Chair	1
3	Student Desks	32
4	2 Drawer File Cabinet	1
5	4 Drawer File Cabinet	1
6	Storage Cabinet, metal 36x18x72	1
7	Bulletin Board	3
8	White board 4 x 6	2
9	Waste basket	2
10	Computer System	1
11	Printer/Scanner	1
12	Student chair 18"	4
13	Teacher Desks	1
14	Teacher Chair	1
15	Student Desks	
16	White board 4 x 6	
17	Smart board	1
18	ELMO	1
19	Multimedia Projector	1
20	4 Drawer File Cabinet	1
21	Storage Cabinet, metal 36x18x72	1
22	Teacher Podiums	1
23	Bulletin Board 60 x 36	2
24	Book Shelves 4 tier	1
25	Computer System (Teacher Use)	1
26	Computer System (Student Use)	4
27	Printer/Scanner	1

	BUILDING SPECS FOR SS DEPT
1	Located near each other <i>Please! Yes</i>
2	Office size: <i>30x50</i>
3	Outlets on every wall <i>Yes</i>
4	Internet access <i>Yes</i>
5	Phone line <i>Yes</i>
6	
7	
8	
9	
10	
11	
12	
13	
14	
15	
16	
17	
18	
19	
20	
21	
22	
23	
24	
25	

HEALTH CLASS Mr. Palacios

SSHS High School	COLLATERAL EQUIPMENT	
Item #	ITEM	QTY
1	Teacher Desk	1
2	Teacher Chair	2
3	Student Desks	28
4	2 Drawer File Cabinet	1
5	4 Drawer File Cabinet	2
6	Storage Cabinet, metal 36x18x72	2
7	Bulletin Board	4
8	White board 4 x 6	
9	Waste basket	2
10	Computer System	1
11	Printer/Scanner	1
12	Student chair 18"	4
13	Teacher Desks	
14	Teacher Chair	
15	Student Desks	
16	White board 4 x 6	
17	Smart board	1
18	ELMO	1
19	Multimedia Projector	1
20	4 Drawer File Cabinet	2
21	Storage Cabinet, metal 36x18x72	2
22	Teacher Podiums	1
23	Bulletin Board 60 x 36	2
24	Book Shelves 4 tier	2
25	Computer System (Teacher Use)	1
26	Computer System (Student Use)	4
27	Printer/Scanner	
28	Overhead Projector SCREEN (Roll up/down)	

	BUILDING SPECS FOR SS DEPT
1	Located near each other = Yes Please!
2	Office size: \approx 20x40
3	Outlets on every wall = Yes
4	Internet access \approx Yes
5	Phone line w/ phone = Yes
6	
7	
8	
9	
10	
11	
12	
13	
14	
15	
16	
17	
18	
19	
20	
21	
22	
23	
24	
25	

SSHS High School	COLLATERAL EQUIPMENT	
Item #	ITEM	QTY
1	Teacher Desk	1
2	Teacher Chair	1
3	Student Desks	30
4	2 Drawer File Cabinet	1
5	4 Drawer File Cabinet	
6	Storage Cabinet, metal 36x18x72	1
7	Bulletin Board	3
8	White board 4 x 6	2
9	Waste basket	2
10	Computer System	1
11	Printer/Scanner	1
12	Student chair 18"	
13	Teacher Desks	
14	Teacher Chair	
15	Student Desks	
16	White board 4 x 6	
17	Smart board	
18	ELMO	
19	Multimedia Projector	1
20	4 Drawer File Cabinet	
21	Storage Cabinet, metal 36x18x72	
22	Teacher Podiums	1
23	Bulletin Board 60 x 36	
24	Book Shelves 4 tier	
25	Computer System (Teacher Use)	1
26	Computer System (Student Use)	30
27	Printer/Scanner	3

S. Bejerna (H&A)

projector screens 1

BUILDING SPECS FOR SS DEPT	
1	Located near each other
2	Office size:
3	Outlets on every wall
4	Internet access
5	Phone line
6	
7	
8	
9	
10	
11	
12	
13	
14	
15	
16	
17	
18	
19	
20	
21	
22	
23	
24	
25	

Health: Jesse Brandoz

SSHS High School		COLLATERAL EQUIPMENT	
Item #	ITEM	QTY	
1	Teacher Desk	1	
2	Teacher Chair	1	
3	Student Desks	30	
4	2 Drawer File Cabinet	1	
5	4 Drawer File Cabinet	1	
6	Storage Cabinet, metal 36x18x72	1	
7	Bulletin Board	2	
8	White board 4 x 6	2	
9	Waste basket	1	
10	Computer System	1	
11	Printer/Scanner	1	
12	Student chair 18"	5	
13	Teacher Desks		
14	Teacher Chair		
15	Student Desks		
16	White board 4 x 6		
17	Smart board	1	
18	ELMO	1	
19	Multimedia Projector	1	
20	4 Drawer File Cabinet	1	
21	Storage Cabinet, metal 36x18x72	1	
22	Teacher Podiums	1	
23	Bulletin Board 60 x 36	1	
24	Book Shelves 4 tier	1	
25	Computer System (Teacher Use)	1	
26	Computer System (Student Use)	3	
27	Printer/Scanner	1	

BUILDING SPECS FOR SS DEPT	
1	Located near each other
2	Office size:
3	Outlets on every wall
4	Internet access
5	Phone line
6	
7	
8	
9	
10	
11	
12	
13	
14	
15	
16	
17	
18	
19	
20	
21	
22	
23	
24	
25	

Specifications for the Gym

- *Wood flooring is recommended.
- *There should be a press box upstairs.
- *Gym should have a main full size basketball court. 2 width size basketball courts run through the main court forming 6 baskets. A large curtain that can divide the court in half (Ex: JFK gym curtain).
- *Stadium bleacher that can be retractable to provide more space for PE Classes and so area can be cleaned.
- *Gym floors should have volleyball pole insert for the main floor and for the side courts.
- *Gym should have 5 rooms for Table tennis, Weight Room, mat rooms, Aerobics room and Kinetic machines room.
- *The PE offices should be larger than present with view into the Gym (EX. Okkodo Gym). PE offices should have a full bathroom and shower (Ex. Okkodo Gym). Also a view to the locker-room.
- *There should be two separate storages for Athletic equipment and PE equipment.
- *There should be an AD office. A balcony overlooking gym floor or second floor that the AD office could be placed.
- * A locker room that is large enough to accommodate 80 students comfortably. The locker room should have an open floor concept. Benches for seating in the middle. The floor should be tiled for easy cleaning. Drainage outlet on main floor for easy cleaning. Shower rooms should be well ventilated with fail safe drains. Shower stalls in both boy's and girl's shower. Locker rooms should have 2 exits. One leading to the gym, the other leading outside to prevent mud and water being tracked into the gym. The locker rooms should have restrooms and sinks.
- *A separate public restroom in the gym should be built to accommodate athletic or other events.
- *Concession stands for gym and outside access.

Specification for Softball field/baseball field

- *Following all recommended distance stated in softball/baseball rule book to declare our field legal to play
- *All turf (Ex. Naval station Softball field)
- * 2 enclosed dugouts with access only to field. Chain-link front, concrete walls for other 3 walls.
- *Storage room building to store baseball/softball field maintenance equipment and sport equipment.
- *Aluminum bleacher for spectators.
- *At least 10 ft. fencing enclosing fields for security and safety of players and spectators. This also prevents dogs or other wild animals from entering field.

*Lights for night games

*15 ft. by 70 ft. enclosed area for a batting cage

*Electronic scoreboards for both fields that shows teams, runs, strikes, balls and outs.

*Press box or Small dugout like structure for official scorekeepers, teacher or other game officials behind the backstop.

Specification for tennis courts

- 4 full size tennis courts to accommodate 28 student PE classes or 4 tennis matches
- Tennis hitting walls equal to the width of the tennis court that also serve as wind breakers
- Volleyball pole inserts along with tennis pole inserts Ex: SSSH tennis court
- Chain-link fence surrounding court
- Aluminum bleachers outside fence for spectators
- A 20 by 20 ft. covered shelter

Specification for Track/soccer/football field

Track and Field Spec:

Track: 400m

-Rubberized to IIAAF standards

-8 Lane track

-Marks painted:

-Start/Finish

-100m, 100mh, 110mh, 200m, 400m, 800m, 1.5K, 3K, 5K marks

-Relay exchange

-Proper Drainage

-Fencing to secure the whole track, equipment, and property

-Jumping pits:

-Long and Triple Jump

-Runway: Long and triple marked

-Dry sand pit with roll-out dome cover lid

-High Jump

-Rubberized jump area at curve end of Track

-Official marked out area for High jump mat and bar stands

-Throwing Pits:

-Shot Put

-Concrete 8' circumference, leveled circle, with proper drainage

-Toe board

-Discus

-Concrete 10' circumference, leveled circle, with proper drainage

- Toe board
- Throwing cage
- Javelin
 - Rubberized running path at curve end of track
 - separate from main track for safety reasons
 - Marked throwing area
- Additional Facilities:
 - Restrooms on each sides of Track
 - Locker rooms for outdoor sports
 - shower with stalls
 - lockers
 - Storage rooms (Storage for track and field and Football equipment)
 - Press Box
 - Lights
 - Bleachers
- Inner Field: Purpose for Football, Rugby, and Soccer
 - Artificial turf
 - Marked areas for:
 - Football
 - Rugby
 - Soccer
 - With proper drainage
- 5 ft. chain-link surrounding track to prevent spectators on the field and on the track. This is for safety reasons and prevent excessive wear and tear on the track

Football/soccer practice field

150' by 150' flat field

Nurse's office NURSE

To consider when developing SSHS school nurse office:

- Negative pressure ventilation to circulate air exchanges from to outside. Airborne Precautions prevent transmission of infectious agents that remain infectious over long distances when suspended in the air (e.g., rubeola virus [measles], varicella virus [chickenpox], M. tuberculosis, and possibly SARS-CoV. The preferred placement for patients who require Airborne Precautions is in an airborne infection isolation room (AIIR). An AIIR is a single-patient room that is equipped with special air handling and ventilation capacity that meet the American Institute of Architects/Facility Guidelines Institute (AIA/FGI) standards for AIIRs (i.e., monitored negative pressure relative to the surrounding area, 12 air exchanges per hour for new construction and renovation and 6 air exchanges per hour for existing facilities, air exhausted directly to the outside or recirculated through HEPA filtration before return)
- Add dividers around beds that do not compromise auditory confidentiality, but still provide efficient supervision. This is difficult to maintain if many students are seen at multiple and ongoing times.
- A bigger isolation room to place students who are PPD positive or a mass outbreak of a disease that are required to be excluded.
- An eye wash station connected to the current sink for eye injuries.
- A supply room to store extra equipment if a mass casualty happens for easy access next to the nurse's office. It may take time to go to another site to retrieve needed supplies when life-saving seconds count.
- Dual individual phone line system.
- 2-3 mobile (with wheels) cots to transport student during emergency situations
- Place nurse's office next to emergency exits.
- Continue to have new, efficient (smart) elevators that require less maintenance
- Continue to place nurse's office next to fire exit sites
- Continue to have a counseling & office area with sufficient space and privacy for assessments and treatment
- Provide an AED (automated external defibrillator)

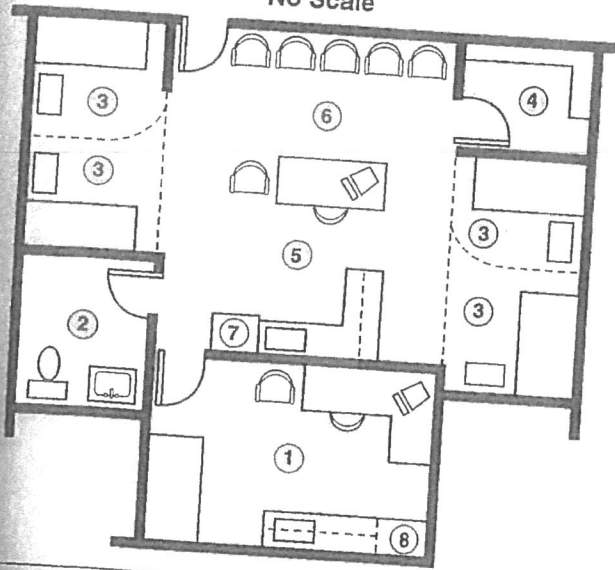
*Attached is a sample nurse office layout.

For Special Ed classroom:

Routinely SPED child get changed in the nurse's office as well. Since bed space is limited, students have to move out of the way to change the child. Sometimes the special children also yell which is common among their population. Although this creates noise pollution for the other sick children who are sensitive to noise if they have a migraine or are sick. This also makes it difficult to assess students. May be in addition to the SPED classroom to have a changing station for them next to their classroom.

NURSE

<600 Capacity Secondary School
No Scale

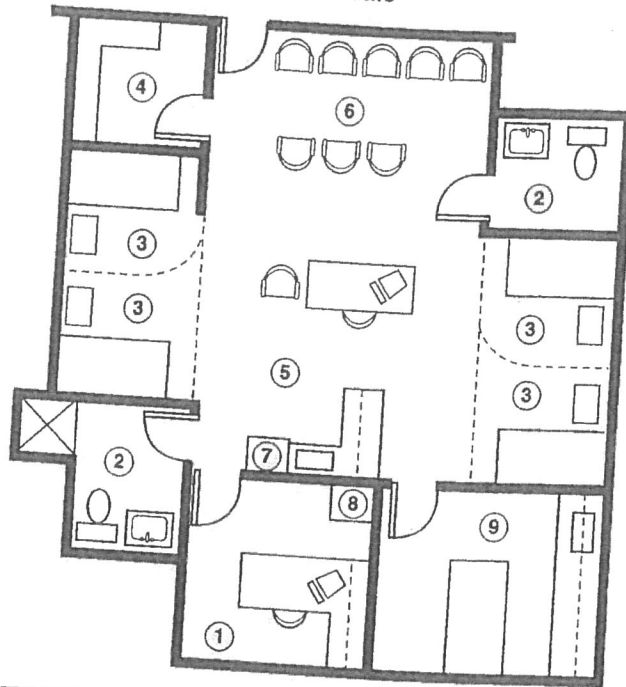


- 1 = Office/Consultation & examination
- 2 = Toilet Room
- 3 = Rest
- 4 = Storage
- 5 = Treatment/Medication
- 6 = Waiting
- 7 = Refrigerator
- 8 = Wardrobe

Healthy and Safe Environment
Cleanliness and serenity are closely linked. Cleanliness is associated with neatness, orderliness, and methodical activity and can give students and staff a higher level of confidence in the health services provided. The design must support a sanitary and safe environment that promotes good health. The ability to clean and sanitize the environment requires consideration when purchasing furnishings and/or planning work areas. "The surface finishes in these areas should be designed for easy cleaning and sanitizing without sacrificing an aesthetically pleasing environment. This would include the treatment of floors, walls, windows, window blinds/

>600 Capacity Elementary/Regional
Special Education School

<1200 Capacity Secondary/Regional
Special Education School
No Scale



- 1 = Office/Consultation
- 2 = Toilet Room
- 3 = Rest
- 4 = Storage
- 5 = Treatment/Medication
- 6 = Waiting
- 7 = Refrigerator
- 8 = Wardrobe
- 9 = Examination/Isolation

Figure 43.3 ■ Less than 600 capacity elementary school.

Figure 43.4 ■ Greater than 600 capacity elementary/regional special education school. Less than 1,200 capacity secondary/regional special education school.

dignified and technically proficient. Color can reduce institutional appearance, reinforce the philosophy of the health services, support function, reduce stress, and create a visually interesting, aesthetically pleasing, and stimulating space while creating a supportive, nurturing, and healthy environment. Colors are introduced in furnishings, drapes, and artwork. Sufficient lighting also enhances safety. In addition to natural light, bright and adjustable overhead illumination (2 x 4 fluorescent) is recommended in rest areas, in closets, and over the treatment area (Texas Department of Health [TDH], 2001).

Decorative touches enhance the space and create a familiar atmosphere. Warm colors, varied lighting, and furnishings can create a more inviting, home-like, and user-friendly room that is more familiar and relaxing. Different textures minimize the institutional feel, reduce stress, and add interest. Nature pictures can reduce blood pressure and muscle tension (Frasca-Beaulier, 1999). All interior design considerations should appeal to the age group of the students being served.